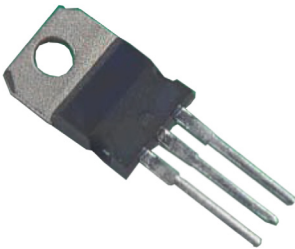


RoHS
Compliant



Features

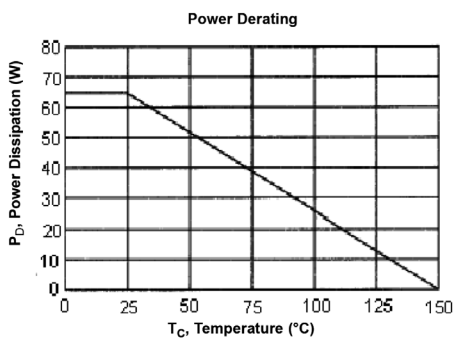
- Designed for general-purpose amplifier and low speed switching applications
- Collector-emitter sustaining voltage - $V_{CE(sus)}$ = 60V (minimum) - TIP120, TIP125
80V (minimum) - TIP121, TIP126
100V (minimum) - TIP122, TIP127
- Collector-emitter saturation voltage - $V_{CE(sat)}$ = 2V (maximum) at $I_C = 3A$
- Monolithic construction with built-in base-emitter shunt resistors

Maximum Ratings

Parameter	Symbol	TIP120	TIP121	TIP122	Unit
		TIP125	TIP126	TIP127	
Collector-Emitter Voltage	V_{CEO}	60	80	100	V
Collector-Base Voltage	V_{CBO}				
Emitter-Base Voltage	V_{EBO}	5			
Collector Current - Continuous - Peak	I_C	5			A
	I_{CM}	8			
Base Current	I_B	120			mA
Total Power Dissipation at $T_C = 25^\circ C$ Derate above $25^\circ C$	P_D	65			W W / $^\circ C$
		0.52			
Operating and Storage Junction Temperature Range	T_J, T_{STG}	-65 to +150			$^\circ C$

Thermal Characteristics

Parameter	Symbol	Maximum	Unit
Thermal Resistance Junction to Case	$R_{\theta JC}$	1.92	$^\circ C / W$



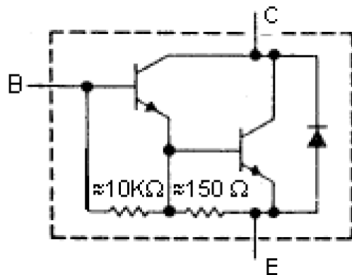
Electrical Characteristics (T_c = 25°C unless otherwise noted)

Characteristic	Symbol	Minimum	Maximum	Unit
Off Characteristics				
Collector-Emitter Breakdown Voltage (1) (I _C = 30 mA, I _B = 0)	V _{CEO(SUS)}	60	-	V
TIP120, TIP125		80		
TIP121, TIP126 TIP122, TIP127		100		
Collector Cut off Current (V _{CE} = 30 V, I _B = 0)	I _{CEO}	-	0.5	mA
(V _{CE} = 40 V, I _B = 0)			0.5	
(V _{CE} = 50 V, I _B = 0)			0.5	
Collector Cut off Current (V _{CE} = 60 V, I _B = 0)	I _{CBO}	-	0.2	mA
(V _{CE} = 80 V, I _B = 0)			0.2	
(V _{CE} = 100 V, I _B = 0)			0.2	
Collector Cut off Current (V _{EB} = 5V, I _C = 0)	I _{EBO}	-	2	
On Characteristics (1)				
DC Current Gain (I _C = 0.5A, V _{CE} = 3V)	h _{FE}	1,000	-	-
(I _C = 3A, V _{CE} = 3V)		1,000		
Collector-Emitter Saturation Voltage (I _C = 3A, I _B = 12mA)	V _{CE(sat)}	-	2	V
(I _C = 5A, I _B = 20mA)			4	
Base-Emitter on Voltage (I _C = 3A, V _{CE} = 3V)	V _{BE(on)}	-	2.5	
Dynamic Characteristics				
Small-Signal Current Gain (I _C = 3A, V _{CE} = 4V, f = 1MHz)	h _{fe}	4	-	-
Output Capacitance (V _{cb} = 10V, I _E = 0, f = 0.1MHz)	C _{ob}	-	300	pF
TIP120, TIP121, TIP122 TIP125, TIP126, TIP127			250	

(1) Pulse Test : Pulse width = 300μs, duty cycle ≤2%

Internal Schematic Diagram

NPN
TIP120
TIP121
TIP122



PNP
TIP125
TIP126
TIP127

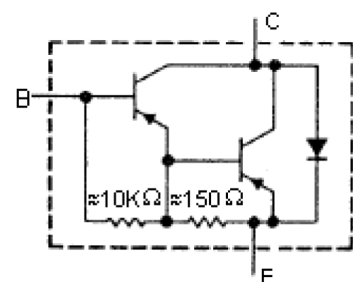


Figure - 2 Switching Time

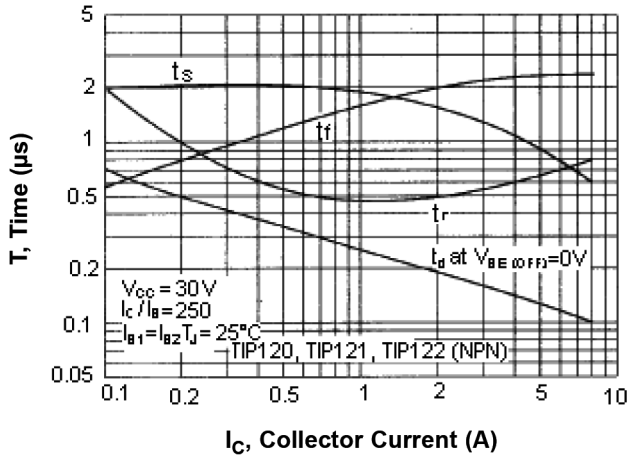


Figure - 3 Switching Time

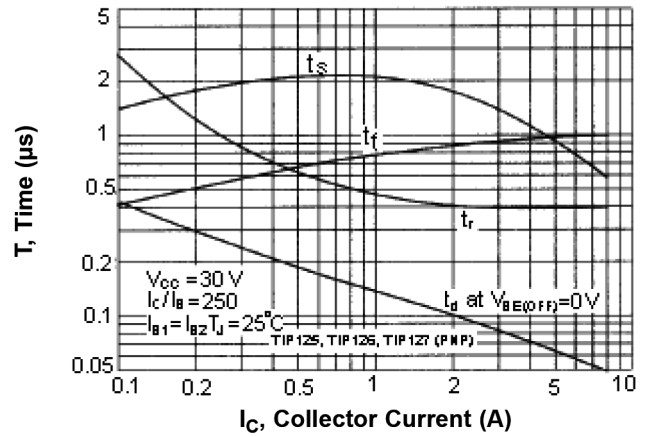


Figure - 4 Small Signal Current Gain

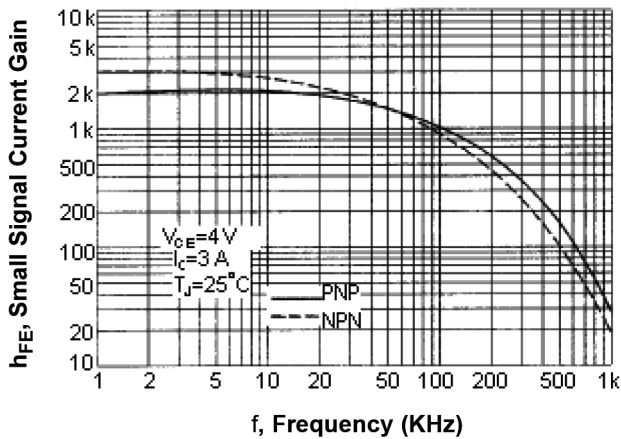


Figure - 5 Capacitances

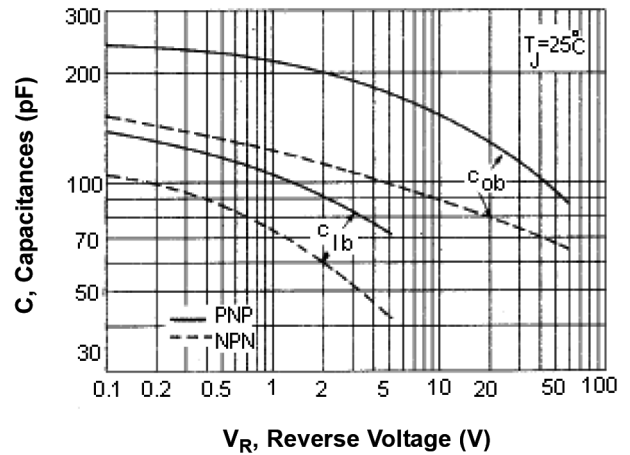
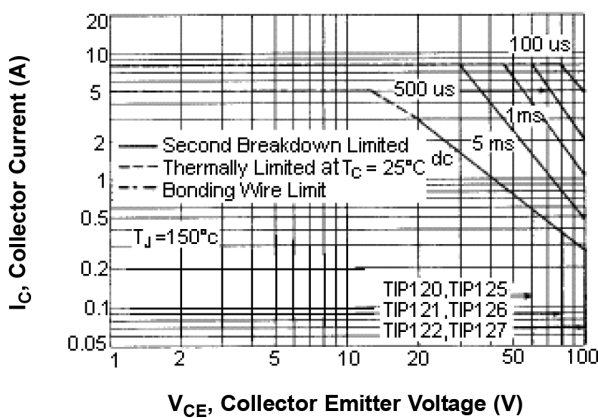


Figure - 6 Active Region Safe Operating Area



There are two limitations on the power handling ability of a transistor: average junction temperature and second breakdown safe operating area curves indicate $I_C - V_{CE}$ limits of the transistor that must not be subjected to greater dissipation than the curves indicate

The data of Figure - 6 is based on $T_{J(PK)} = 150^\circ\text{C}$; T_C is variable depending on power level. Second breakdown pulse limits are valid for duty cycles to 10% provided $T_{J(PK)} \leq 150^\circ\text{C}$. At high case temperatures, thermal limitation will reduce the power that can be handled to values less than the limitations imposed by second breakdown

Figure - 7 DC Current Gain

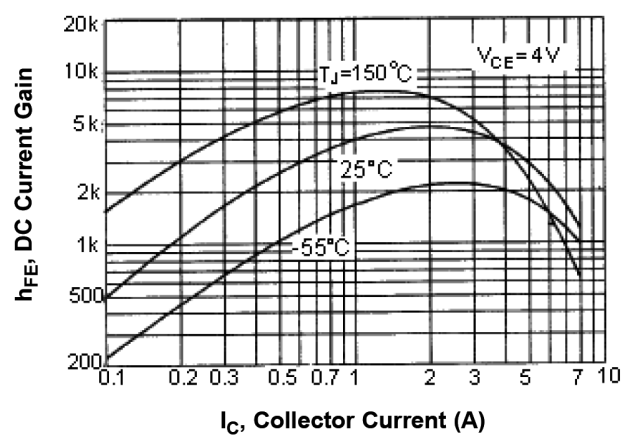
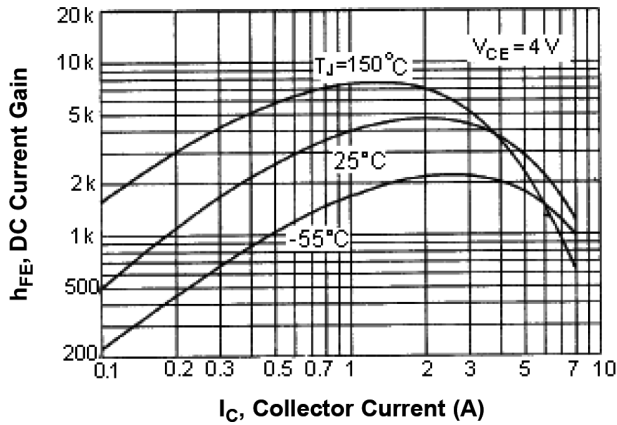


Figure - 8 Collector Saturation Region

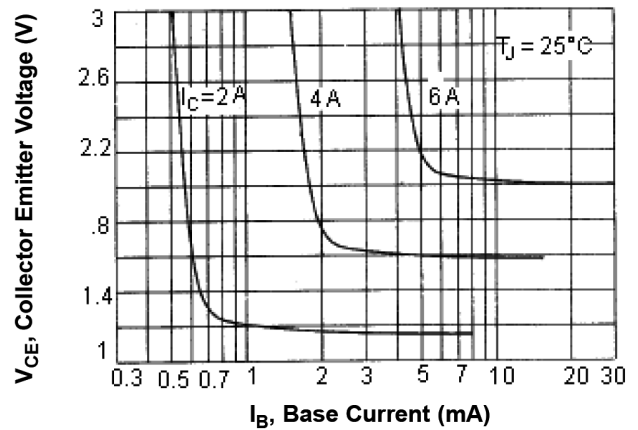
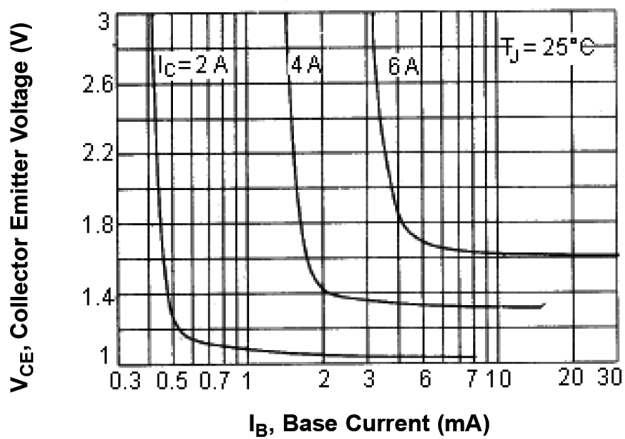
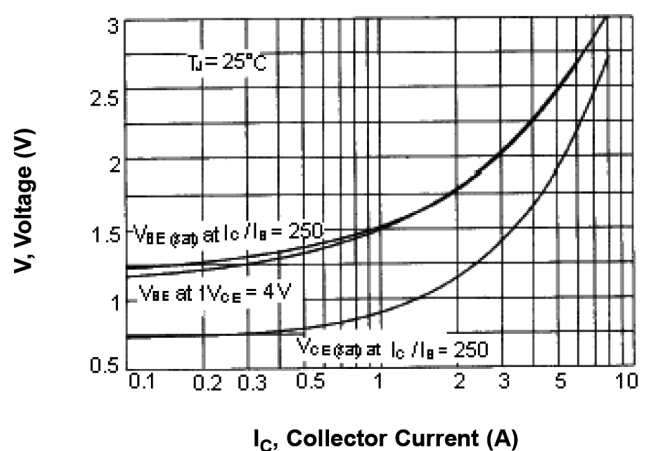
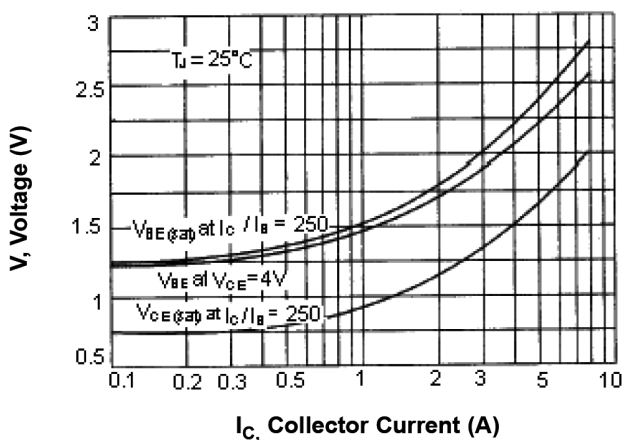


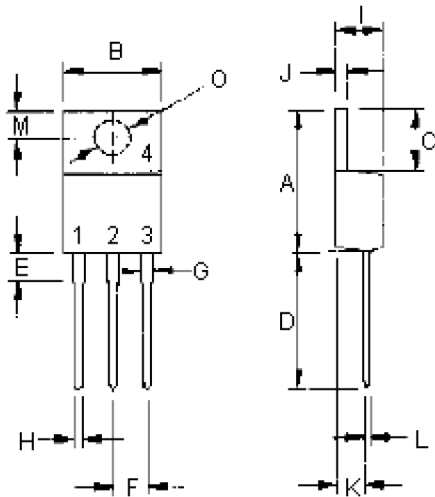
Figure - 9 "ON" Voltage



Specification Table

Ic A	V _{CEO} (Maximum) V	h _{FE} Minimum at I _c = 3A	P _{tot} at 25°C W	Package	Part Number	
					NPN	PNP
5	60	1,000	65	TO-220	TIP120	TIP125
	80				TIP121	TIP126
	100				TIP122	TIP127

Diagram



Dimensions	Minimum	Maximum
A	14.68	15.31
B	9.78	10.42
C	5.01	6.52
D	13.06	14.62
E	3.57	4.07
F	2.42	3.66
G	1.12	1.36
H	0.72	0.96
I	4.22	4.98
J	1.14	1.38
K	2.2	2.97
L	0.33	0.55
M	2.48	2.98
O	3.7	3.9

Dimensions : Millimetres

Important Notice : This data sheet and its contents (the "Information") belong to the members of the AVNET group of companies (the "Group") or are licensed to it. No licence is granted for the use of it other than for information purposes in connection with the products to which it relates. No licence of any intellectual property rights is granted. The Information is subject to change without notice and replaces all data sheets previously supplied. The Information supplied is believed to be accurate but the Group assumes no responsibility for its accuracy or completeness, any error in or omission from it or for any use made of it. Users of this data sheet should check for themselves the Information and the suitability of the products for their purpose and not make any assumptions based on information included or omitted. Liability for loss or damage resulting from any reliance on the Information or use of it (including liability resulting from negligence or where the Group was aware of the possibility of such loss or damage arising) is excluded. This will not operate to limit or restrict the Group's liability for death or personal injury resulting from its negligence. Multicomp Pro is the registered trademark of Premier Farnell Limited 2019.