

NBC-PP-J1PGY-S/R4IDC8 - DIN rail adapter



1100077

<https://www.phoenixcontact.com/gb/products/1100077>

Please be informed that the data shown in this PDF document is generated from our online catalog. Please find the complete data in the user documentation. Our general terms of use for downloads are valid.



DIN rail adapter, degree of protection: IP20, number of positions: 8, 10 Gbps, CAT6_A, material: PC-GF10, connection method: IDC connection, connection cross section: AWG 26- 22, Item set, DIN rail adapter including RJ45 cable connection module

Product description

Compact DIN rail adapter, including RJ45 cable connection module, with optional shield connection, with dust protection cover, one-piece design

Your advantages

- Compact design
- For distributing copper and fiber optic cabling
- Front release without special tool
- One-Piece Design
- Assembly without special tools
- Optional overall shielding braid for copper modules
- Security elements available as accessories
- Adapter-less integration of module inserts
- Marking service: Phoenix Contact can custom-mark all labels according to your requirements

Commercial data

| | |
|--------------------------------------|---------------|
| Item number | 1100077 |
| Packing unit | 1 pc |
| Minimum order quantity | 1 pc |
| Sales key | ABNLAA |
| Product key | ABNLAA |
| GTIN | 4055626951447 |
| Weight per piece (including packing) | 49 g |
| Weight per piece (excluding packing) | 49 g |
| Customs tariff number | 85366990 |
| Country of origin | DE |

NBC-PP-J1PGY-S/R4IDC8 - DIN rail adapter

1100077

<https://www.phoenixcontact.com/gb/products/1100077>

Set consists of

NBC-PP-G1PGY - DIN rail adapter

1041740

<https://www.phoenixcontact.com/gb/products/1041740>

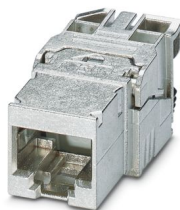


DIN rail adapter, design: Headers with shielding, degree of protection: IP20, material: PC-GF10, connection method: Quick connection, without assembled modules

CUC-I-J1ZNI-S/R4IDC8 - RJ45 jack insert

1417274

<https://www.phoenixcontact.com/gb/products/1417274>



RJ45 jack insert, design: RJ45, degree of protection: IP20, number of positions: 8, 10 Gbps, CAT6_A, material: Metal, connection method: IDC connection, connection cross section: AWG 26- 22, cable outlet: straight, Adapter-free design, Ethernet

Technical data

Notes

| | |
|--------------------|--|
| Notes on operation | Set item with RJ45 cable connection module |
|--------------------|--|

Product properties

| | |
|---------------------|-------------|
| Product type | Patch panel |
| Type | RJ45 |
| Number of positions | 8 |
| Number of slots | 1 |

Electrical properties

| | |
|-----------------------|----------------------------------|
| Rated voltage (III/3) | 72 V (DC) |
| Frequency range | 500 MHz |
| Contact resistance | ≤ 5 mΩ (Shield-ground, optional) |
| Transmission medium | Copper |
| Transmission speed | 10 Gbps |

Connection data

| | |
|-------------------|----------------|
| Connection method | IDC connection |
|-------------------|----------------|

Dimensions

| | |
|--------|---------|
| Width | 18 mm |
| Height | 80 mm |
| Depth | 64.6 mm |

Material specifications

| | |
|--|---------|
| Flammability rating according to UL 94 | V0 |
| Housing material | PC-GF10 |
| Material, protective cover | PC |

Cable/line

| | |
|-------------------------|-----------------|
| External cable diameter | 4.5 mm ... 9 mm |
|-------------------------|-----------------|

Environmental and real-life conditions

Ambient conditions

| | |
|---|------------------|
| Degree of protection | IP20 |
| Ambient temperature (operation) | -10 °C ... 60 °C |
| Ambient temperature (storage/transport) | -40 °C ... 60 °C |

Mounting

| | |
|---------------|-------------------|
| Mounting type | DIN rail mounting |
|---------------|-------------------|

NBC-PP-J1PGY-S/R4IDC8 - DIN rail adapter



1100077

<https://www.phoenixcontact.com/gb/products/1100077>

Approvals

🔗 To download certificates, visit the product detail page: <https://www.phoenixcontact.com/gb/products/1100077>



EAC

Approval ID: 19060508

NBC-PP-J1PGY-S/R4IDC8 - DIN rail adapter



1100077

<https://www.phoenixcontact.com/gb/products/1100077>

Classifications

ECLASS

| | |
|-------------|----------|
| ECLASS-13.0 | 27440392 |
| ECLASS-15.0 | 19170112 |

ETIM

| | |
|-----------|----------|
| ETIM 10.0 | EC001128 |
|-----------|----------|

UNSPSC

| | |
|-------------|----------|
| UNSPSC 21.0 | 39121400 |
|-------------|----------|

NBC-PP-J1PGY-S/R4IDC8 - DIN rail adapter



1100077

<https://www.phoenixcontact.com/gb/products/1100077>

Environmental product compliance

EU RoHS

| | |
|---|--------------------|
| Fulfills EU RoHS substance requirements | Yes, No exemptions |
|---|--------------------|

China RoHS

| | |
|--|--|
| Environment friendly use period (EFUP) | EFUP-E |
| | No hazardous substances above the limits |

EU REACH SVHC

| | |
|-------------------------------------|----------------------------|
| REACH candidate substance (CAS No.) | No substance above 0.1 wt% |
|-------------------------------------|----------------------------|

Phoenix Contact 2026 © - all rights reserved
<https://www.phoenixcontact.com>

PHOENIX CONTACT Ltd
Halesfield 13, Telford
Shropshire, TF7 4PG
01952 681700
info@phoenixcontact.co.uk