



Part Number : [397730006](#)

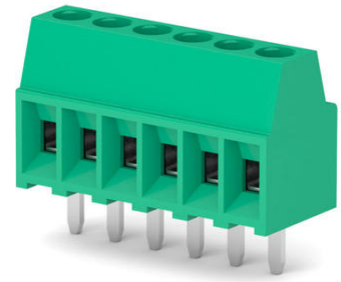
Product Description : 2.54mm Pitch Beau Eurostyle Fixed Mount PCB Terminal Block, Green, 6 Circuits

Series Number : 39773

Status : Active

Product Category : Terminal Blocks and Barrier Strip

Engineering Part Number : MX-MSD06004



Documents and Resources

Drawings

[397730006_sd.pdf](#)

3D Models and Design Files

[STEP AP242](#)


[SOLIDWORKS](#)

[Creo](#)

[Symbol and Footprint \(Multi-Format\)](#)

Product Environment Compliance

Compliance

GADSL/IMDS	Not Relevant
China RoHS	 per SJ/T 11365-2006
EU ELV	Not Relevant
Low-Halogen Status	Low-Halogen per IEC 61249-2-21
REACH SVHC	Contains Lead per D(2025)6375-DC (05 Nov 2025)
EU RoHS	Compliant with Exemption 6(c) per EU 2015/863

[Compliance Statements](#)

- EU RoHS
- REACH SVHC
- Low-Halogen

Industry Documents

- IPC 1752A Class C
- IPC 1752A Class D
- Molex Product Compliance Declaration
- IEC-62474
- chemSHERPA (xml)

Substances of Interest

- PFAS

EU RoHS Certificate of Compliance

Additional Product Compliance Information

Part Details

General

Status	Active
Category	Terminal Blocks and Barrier Strip
Series	39773
Description	2.54mm Pitch Beau Eurostyle Fixed Mount PCB Terminal Block, Green, 6 Circuits
Application	Wire-to-Board
Component Type	One Piece
Product Name	Eurostyle Fixed Mount
Type	PCB Terminal Blocks and Connectors
UPC	78172560837

Electrical

Current - Maximum per Contact	10.0A
Voltage - Maximum	150V

Physical

Circuits (Loaded)	6
Circuits (maximum)	6
Color - Resin	Green
Entry Angle	Horizontal
Lock to Mating Part	None
Material - Metal	Copper Alloy

Material - Plating Mating	Tin
Material - Resin	Nylon
Number of Rows	1
Orientation	Vertical
Panel Mount	No
PCB Retention	None
PCB Thickness - Recommended	2.40mm
PC Tail Length	3.40mm
Pitch - Mating Interface	2.54mm
Pitch - Termination Interface	2.54mm
Polarized to Mating Part	N/A
Shrouded	Fully
Stackable	Yes
Temperature Range - Operating	-40° to +110°C
Wire Size (AWG)	16, 18, 20, 22, 24, 26, 28, 30
Wire Size mm ²	0.05-1.31