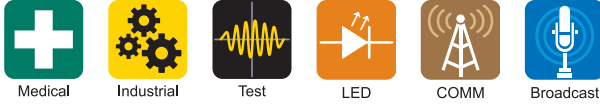
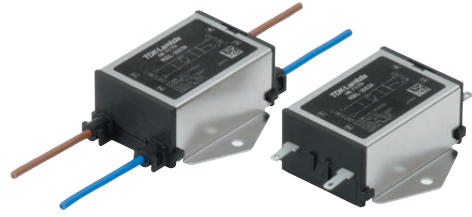


Single phase 250Vac 0.5 to 6A EMC Filters

https://product.tdk.com/en/search/emc/emc/power-line/tec_data/nf_rsel

<https://www.emea.lambda.tdk.com/uk/products/r-series>

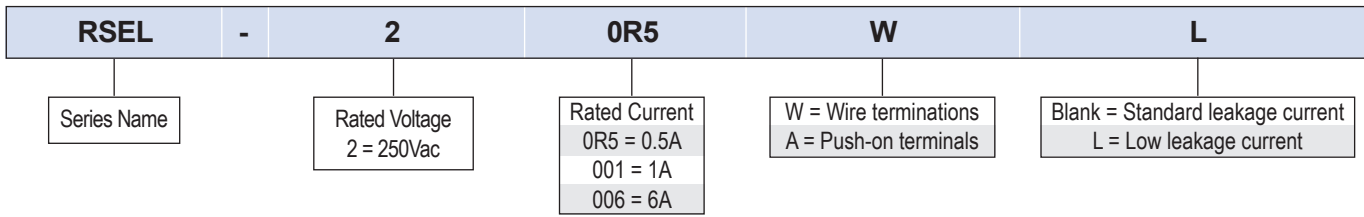


The RSEL single-phase EMC filters are enclosed in a compact case and rated at 250Vac with current levels of 0.5 to 6A, enabling the best attenuation for low current requirements. The RSEL series utilize TDK's ferrite core material to provide noise attenuation. A choice of models with either wire leads or Faston terminals #110 are available and low leakage current versions.

Features	Benefits
• Compact Size	• Less Space Utilized
• 0.5 to 6A Current Ratings	• Optimizes the Attenuation for Lower Current Requirements
• Lightweight	• Ideal for Portable Equipment
• Safety Certified	• Global Use

Model Selector						
Model	Rated Current (A)	HV Pulse Protection	Maximum DC Resistance (mΩ)	Attenuation frequency range (MHz)		Weight (g)
				Common mode at 25dB	Differential mode at 25dB	
RSEL-20R5W	0.5	N	700	0.2 to 10	0.3 to 30	58
RSEL-2001W	1	N	600	0.3 to 10	0.5 to 30	58
RSEL-2002W	2	N	250	0.5 to 10	0.5 to 30	61
RSEL-2003W	3	N	150	0.5 to 10	0.5 to 30	61
RSEL-2006W	6	N	80	1 to 10	1 to 30	61
RSEL-20R5A	0.5	N	700	0.2 to 10	0.3 to 30	43
RSEL-2001A	1	N	600	0.3 to 10	0.5 to 30	43
RSEL-2002A	2	N	250	0.5 to 10	0.5 to 30	46
RSEL-2003A	3	N	150	0.5 to 10	0.5 to 30	46
RSEL-2006A	6	N	80	1 to 10	1 to 30	46

Model Selector						
Model	Rated Current (A)	HV Pulse Protection	Maximum DC Resistance (mΩ)	Attenuation frequency range (MHz)		Weight (g)
				Common mode at 15dB	Differential mode at 25dB	
RSEL-20R5WL	0.5	N	700	0.1 to 5	0.3 to 30	56
RSEL-2001WL	1	N	600	0.1 to 5	0.5 to 30	56
RSEL-2002WL	2	N	250	0.1 to 5	0.5 to 30	59
RSEL-2003WL	3	N	150	0.1 to 5	0.5 to 30	59
RSEL-2006WL	6	N	80	1 to 30	1 to 30	59
RSEL-20R5AL	0.5	N	700	0.1 to 5	0.3 to 30	41
RSEL-2001AL	1	N	600	0.1 to 5	0.5 to 30	41
RSEL-2002AL	2	N	250	0.1 to 5	0.5 to 30	44
RSEL-2003AL	3	N	150	0.1 to 5	0.5 to 30	44
RSEL-2006AL	6	N	80	1 to 30	1 to 30	44



Related Products									
Type	Current Rating (A)	Series	Low Leakage	Faston on Terminals	Wire Leads	DIN Rail Mount	Fused	Discharge Resistor	Metal Case
General purpose with faston terminals	6	RSEC							
General purpose	0.5 - 6	RSEL	Y	Y	Y				Y
HV pulse protection	0.5 - 6	RSAL	Y	Y	Y				Y
Power Entry Module with line filter	3, 6, 10	RPE	Y				Y	Y	
Power Entry Module with line filter, HV Pulse	3, 6, 10	RPA	Y					Y	
Compact size with screw terminals	6 - 30	RSEV				DIN-RSEV*			
Multipurpose	3 - 300	RSEN	Y (Up to 30A)			Y (Up to 30A)			
Multipurpose with HV pulse protection	3 - 60	RSAN	Y (Up to 30A)			Y (Up to 30A)			
High attenuation	3 - 300	RSHN	Y (Up to 30A)			Y (Up to 30A)			
High attenuation with pulse protection	3 - 300	RSMN	Y (Up to 30A)			Y (Up to 30A)			
Wide band, high attenuation	6 - 30	RSKN							

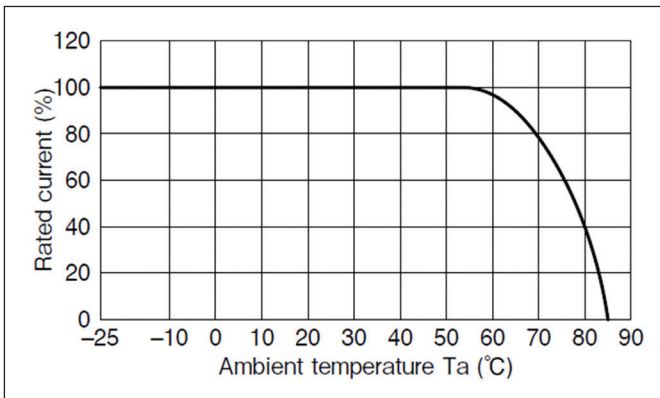
* Separate mounting bracket
[Click here for TDK-Lambda three phase filters.](#)

Specification		
Model		
Input		
Rated Voltage	Vac/Vdc	250 (Safety certified for AC input only)
Input Frequency	Hz	47 - 63
Leakage Current (250Vac, 60Hz)	mA	RSEL-20xxW or A suffix models: 1mA, RSEL-20xxWL or AL models: 0.01mA
Safety Certifications and Markings	-	UL1283, CSA C22.2 No.8, EN60939-1/-2 (ENEC14), conforms to RoHS Directive
Environmental		
Operating Temperature	°C	-25 to +85, derating above 55. See derating curve below
Storage Temperature	°C	-25 to +85
Humidity (non condensing)	%RH	Operating: 15 - 85, Storage 5 - 85
Cooling	-	Convection
Withstand Voltage	Vac	2,500 input to earth
Isolation Resistance (For 1 minute)	MΩ	>100 at 500Vdc
Vibration	-	10-55Hz Amplitude 1.5mm, Sweep for 1 min. X, Y and Z directions for 2 hours each
Other		
Weight (Typ)	g	See model selector
Size (LxWxH)	mm	See outline drawings
Size (LxWxH)	-	See outline drawings
Connectors	-	Faston or AWG20 wire. See outline drawing
Case Material	-	Metal / plastic
MTBF - MIL-HDBK-217F NOTICE2 GF	Hours	RSEL-2001A: 9,978,048, RSEL-2006AL: 26,441,036
Warranty	Years	5

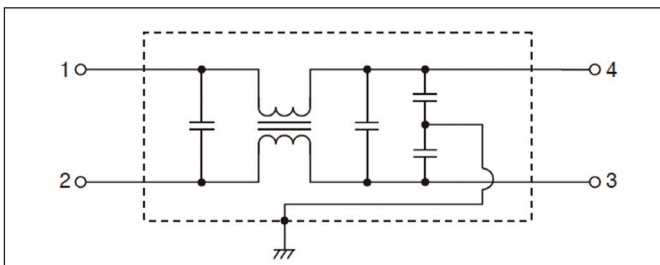
Notes
 See website for detailed specifications, test methods and installation manual
[RSEL technical files](#)

Mechanical Specification

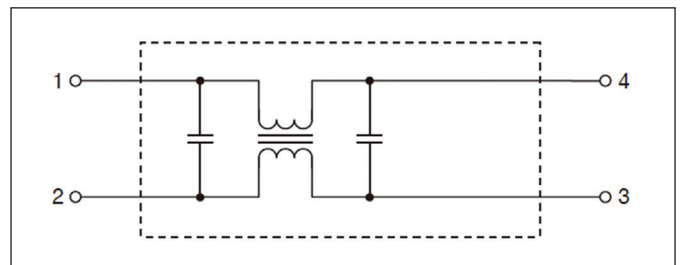
Derating Curve (All models)



Schematic RSEL-2xxxW and RSEL-2xxxA

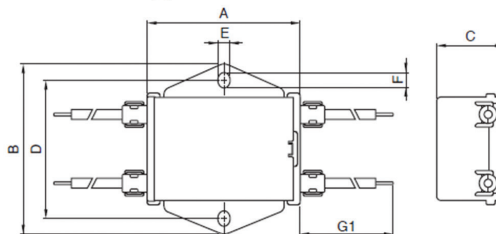


Schematic RSEL-2xxxWL and RSEL-2xxxAL

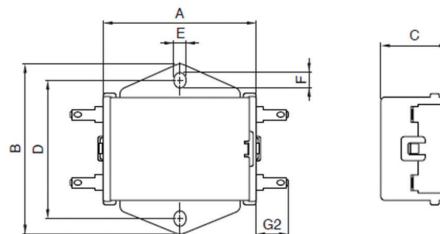


Outline Drawing

RSEL-20R5/2001/2002/2003/2006W(L)



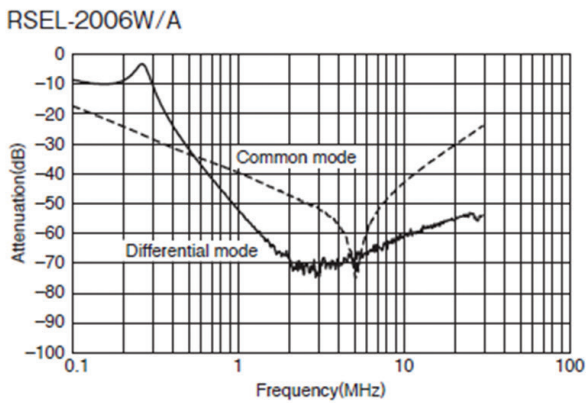
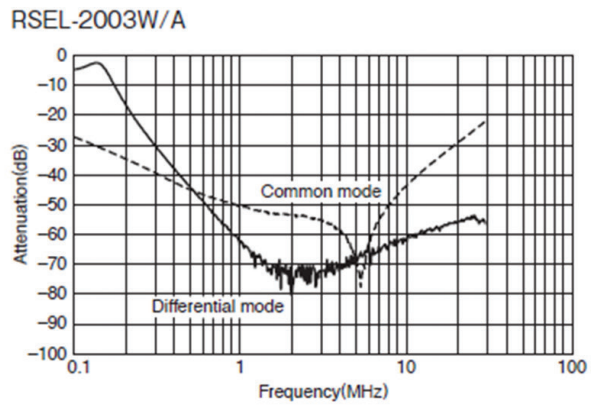
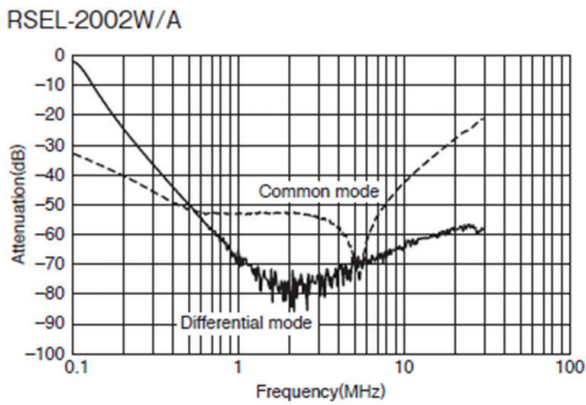
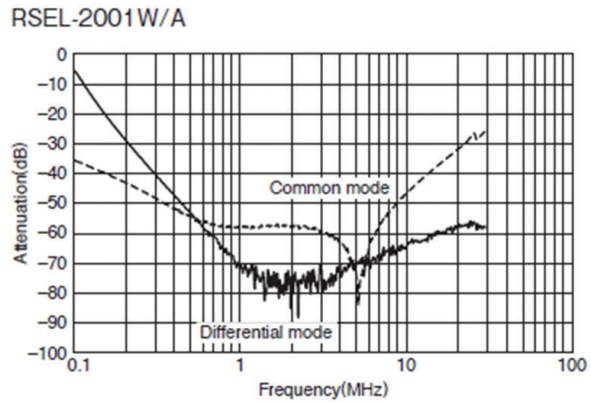
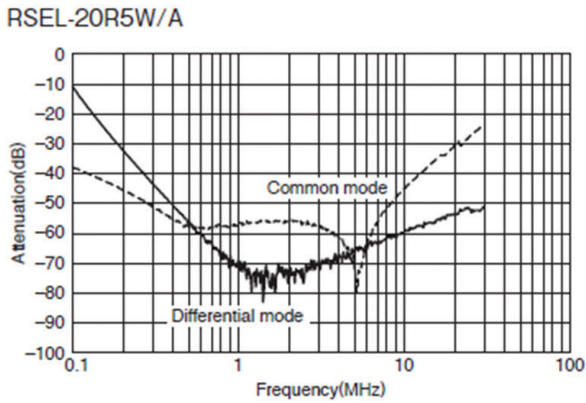
RSEL-20R5/2001/2002/2003/2006A(L)



Dimensions in mm

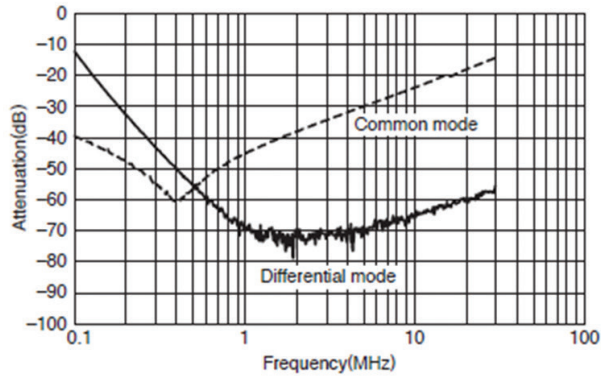
Part No.	A	B	C	D	E	F	G1	G2
RSEL-20R5W(L)	45	50	20	40	3.5	4.5	300	-
RSEL-2001W(L)								
RSEL-2002W(L)								
RSEL-2003W(L)								
RSEL-2006W(L)								
RSEL-20R5A(L)	45	50	20	40	3.5	4.5	-	9
RSEL-2001A(L)								
RSEL-2002A(L)								
RSEL-2003A(L)								
RSEL-2006A(L)								

RSEL Attenuation vs. Frequency

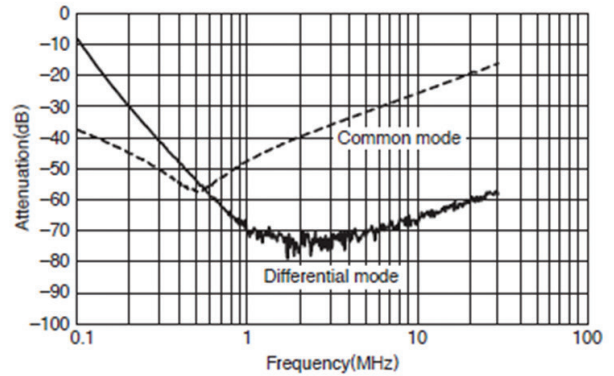


RSEL Attenuation vs. Frequency

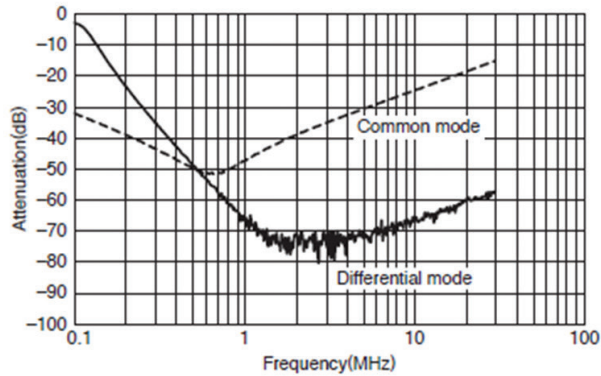
RSEL-20R5WL/AL



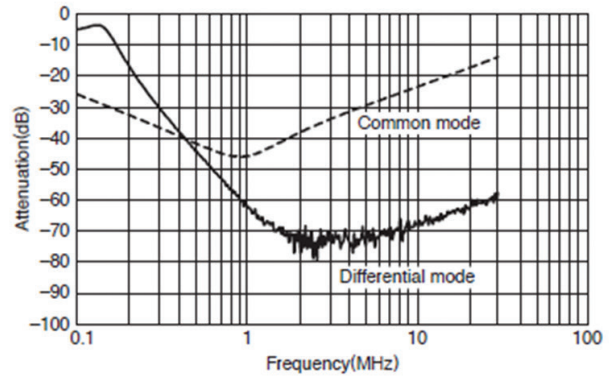
RSEL-2001WL/AL



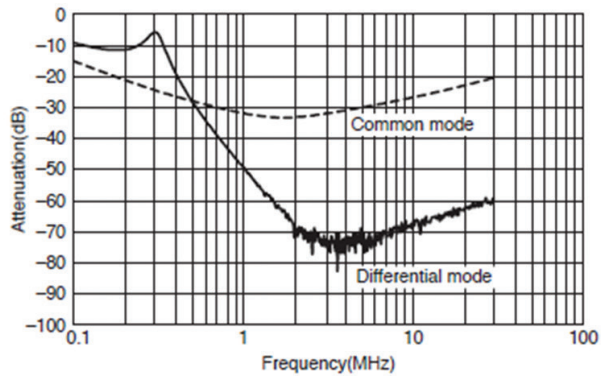
RSEL-2002WL/AL



RSEL-2003WL/AL



RSEL-2006WL/AL





TDK-Lambda France SAS

Tel: +33 1 60 12 71 65
 tf.fr-powersolutions@tdk.com
 www.emea.lambda.tdk.com/fr



Italy Sales Office

Tel: +39 02 61 29 38 63
 tf.it-powersolutions@tdk.com
 www.emea.lambda.tdk.com/it



Netherlands

tf.nl-powersolutions@tdk.com
 www.emea.lambda.tdk.com/nl



TDK-Lambda Germany GmbH

Tel: +49 7841 666 0
 tlg.powersolutions@tdk.com
 www.emea.lambda.tdk.com/de



Austria Sales Office

Tel: +43 2256 655 84
 tlg.at-powersolutions@tdk.com
 www.emea.lambda.tdk.com/at



Switzerland Sales Office

Tel: +41 44 850 53 53
 tlg.ch-powersolutions@tdk.com
 www.emea.lambda.tdk.com/ch



Nordic Sales Office

Tel: +45 8853 8086
 tlg.dk-powersolutions@tdk.com
 www.emea.lambda.tdk.com/dk



TDK-Lambda UK Ltd.

Tel: +44 (0) 12 71 85 66 66
 tlu.powersolutions@tdk.com
 www.emea.lambda.tdk.com/uk



TDK-Lambda Ltd.

Tel: +9 723 902 4333
 tli.powersolutions@tdk.com
 www.emea.lambda.tdk.com/il-en



TDK-Lambda Americas

Tel: +1 800-LAMBDA-4 or 1-800-526-2324
 tla.powersolutions@tdk.com
 www.us.lambda.tdk.com



TDK Electronics do Brasil Ltda

Tel: +55 11 3289-9599
 sales.br@tdk-electronics.tdk.com
 www.tdk-electronics.tdk.com/en



TDK-Lambda Corporation

Tel: +81-3-6778-1113
 www.jp.lambda.tdk.com



TDK-Lambda (China) Electronics Co. Ltd.

Tel: +86 21 6485-0777
 tlc.powersolutions@tdk.com
 www.lambda.tdk.com.cn



TDK-Lambda Singapore Pte Ltd.

Tel: +65 6251 7211
 tfs.marketing@tdk.com
 www.sg.lambda.tdk.com



TDK India Private Limited, Power Supply Division

Tel: +91 80 4039-0660
 mathew.philip@tdk.com
 www.sg.lambda.tdk.com

