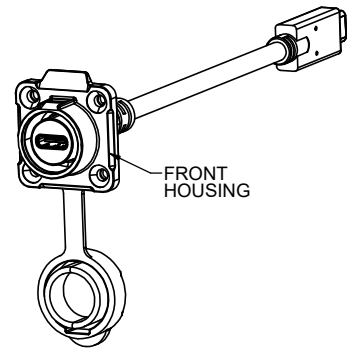
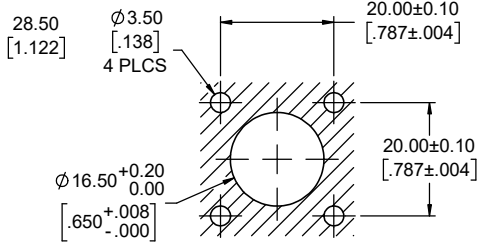
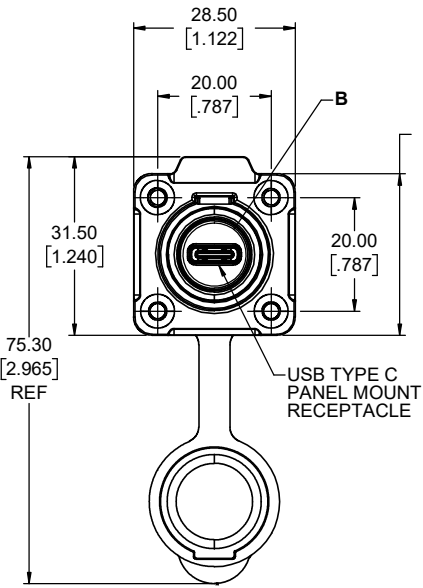
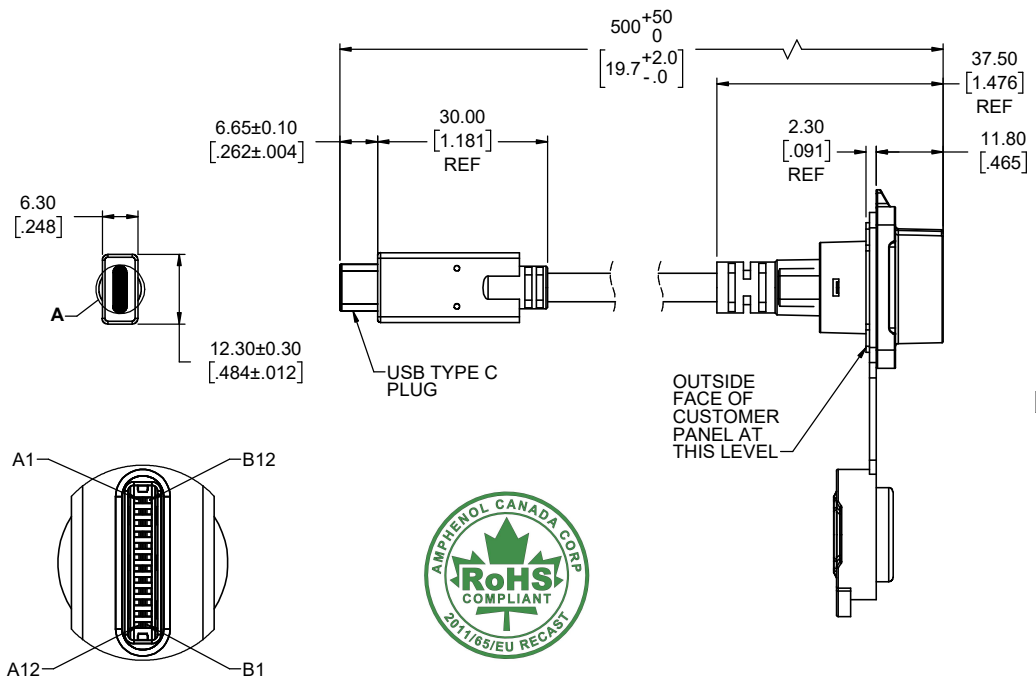
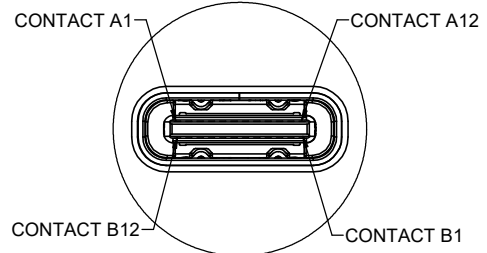


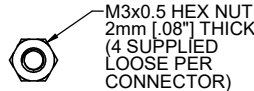
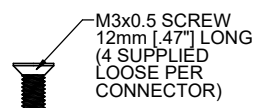
REVISIONS			
REV	DESCRIPTION, ECN, EAR NO.	DATE	APP'D
A	PROPOSAL DRAWING (EAR 15384)	DEC07/23	K.L.



DETAIL A
SCALE 6 : 1



DETAIL B
SCALE 6 : 1



NOTES:

- ALL MATERIALS TO BE RoHS COMPLIANT PER EU DIRECTIVE 2011/65/EU AND AMENDMENTS.
 - FRONT HOUSING: THERMOPLASTIC PBT, UL FLAMMABILITY RATING 94V-0, BLACK.
 - USB HOUSING: THERMOPLASTIC LCP, UL FLAMMABILITY RATING 94V-0, BLACK.
 - USB CONTACT: COPPER ALLOY, GOLD OVER NICKEL PLATED.
 - USB SHELL: STAINLESS STEEL, NICKEL PLATED.
 - DUST COVER: SILICON RUBBER, BLACK.
 - RETENTION CLIP: STAINLESS STEEL.
 - SCREW & HEX NUT: STAINLESS STEEL.
 - OVER-MOLDING: PVC, BLACK.
 - CABLE: UL AWM 2725, VW-1, 80°, 30V, STRANDED COPPER CONDUCTORS, BLACK PVC JACKET.
 - PCB: FR-4 FIBERGLASS, LEAD FREE, UL 94V-0 FLAMMABILITY RATING.
- ELECTRICAL CHARACTERISTICS:
 - CURRENT RATING: COLLECTIVELY 5A MAX. FOR PINS A4, A9, B4, & B9 PLUS 1.25A MAX. FOR PIN B5 WITH RETURN PATH SHARED THROUGH PINS A1, A12, B1 & B12. ADDITIONAL POSITIONS 0.25A MAX. EACH.
 - INSULATION RESISTANCE: 10 MEGOHM MINIMUM.
 - WITHSTAND VOLTAGE: 100VAC.
- ENVIRONMENTAL PROTECTION: IP67 PER IEC 60529 IN MATED CONDITION.

CONNECTION CHART

PLUG END	SIGNAL	RECEPTACLE END
A1, B1, A12, B12	GND	A1, B1, A12, B12
A4, B4, A9, B9	VBUS	A4, B4, A9, B9
A5	CC	A5
B5	VCONN	B5
A6	Dp1	A6
A7	Dn1	A7
A2	SSTXp1	A2
A3	SSTXn1	A3
B11	SSRXp1	B11
B10	SSRXn1	B10
B2	SSTXp2	B2
B3	SSTXn2	B3
A11	SSRXp2	A11
A10	SSRXn2	A10
A8	SBU1	A8
B8	SBU2	B8
SHELL	SHIELD	SHELL

AMPHENOL PART NUMBER: MRU-CF81-6150

UNLESS SPECIFIED OTHERWISE	DRAWN ED.LIU	OCT08/23
PRIMARY UNITS MILLIMETERS	CHECKED E.QU	NOV24/23
SECONDARY UNITS INCHES	M.E. APP'D	
REFERENCE IN PARENTHESES	Q.A. APP'D	
GENERAL TOLERANCES	DWG APPR. K.LAMBIE	DEC07/23
1 DECIMAL PLACE	ENG. REL. NO. EAR 15384	
2 DECIMAL PLACES	REF.	
3 DECIMAL PLACES		
ANGULAR DEGREES	THIRD ANGLE PROJECTION	DO NOT SCALE DRAWING

Amphenol Canada Corp.
Commercial Products

MRU SERIES CABLE ASSEMBLY, USB TYPE-C RECEPTACLE, LATCH LOCK, RECEPTACLE TO PLUG ADAPTER, CABLE LENGTH 0.5M WITH OVER MOLD, RoHS COMPLIANT

P-MRU-CF81-6150

CODE ID NO. 03554 DWG SIZE: X SCALE: 3:2 SHEET 1 OF 1