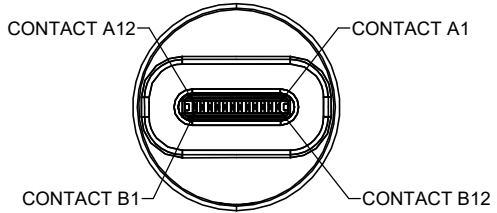
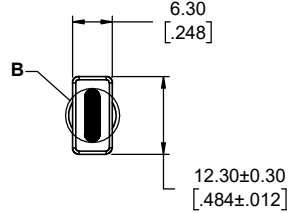
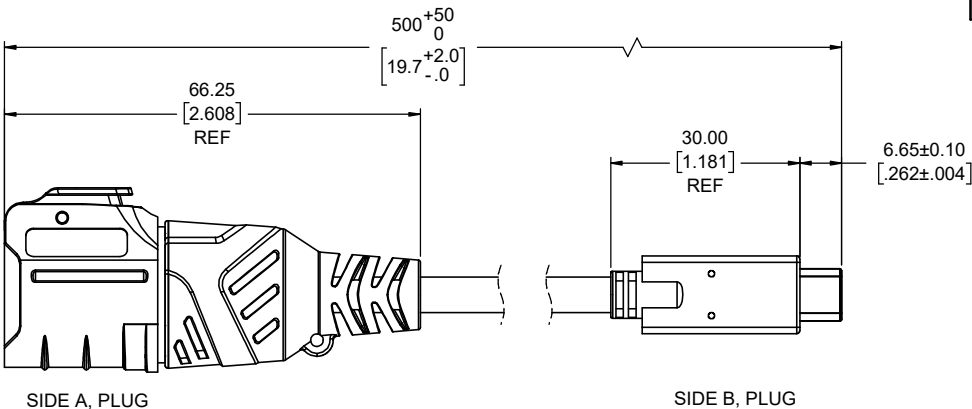
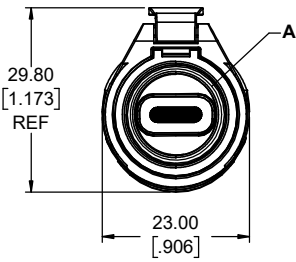
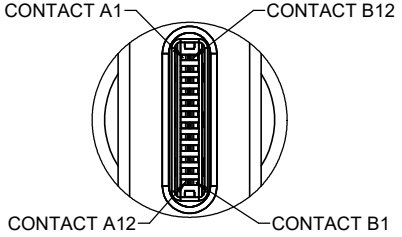


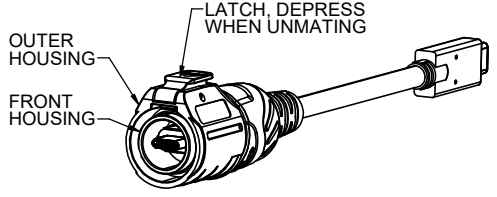
REVISIONS			
REV	DESCRIPTION, ECN, EAR NO.	DATE	APP'D
A	PROPOSAL DRAWING (EAR 15384)	DEC07/23	K.L.



DETAIL A  
SCALE 4 : 1



DETAIL B  
SCALE 6 : 1



CONNECTION CHART		
SIDE A	SIGNAL	SIDE B
A1, B1, A12, B12	GND	A1, B1, A12, B12
A4, B4, A9, B9	VBUS	A4, B4, A9, B9
A5	CC	A5
B5	VCONN	B5
A6	Dp1	A6
A7	Dn1	A7
A2	SSTXp1	B11
A3	SSTXn1	B10
B11	SSRXp1	A2
B10	SSRXn1	A3
B2	SSTXp2	A11
B3	SSTXn2	A10
A11	SSRXp2	B2
A10	SSRXn2	B3
A8	SBU1	B8
B8	SBU2	A8
SHELL	SHIELD	SHELL

10 nF

**NOTES:**

- ALL MATERIALS TO BE RoHS COMPLIANT PER EU DIRECTIVE 2011/65/EU AND AMENDMENTS.
  - OUTER HOUSING, FRONT HOUSING: THERMOPLASTIC PBT, UL FLAMMABILITY RATING 94V-0, BLACK.
  - USB HOUSING: THERMOPLASTIC LCP, UL FLAMMABILITY RATING 94V-0, BLACK.
  - USB CONTACT: COPPER ALLOY, GOLD OVER NICKEL PLATED.
  - USB SHELL: STAINLESS STEEL, NICKEL PLATED.
  - LATCH: ZINC ALLOY PLATED WITH CHROME.
  - GASKET: SILICON RUBBER.
  - OVER-MOLDING: PVC, BLACK.
  - CABLE: UL AWM 2725, VW-1, 80°, 30V, STRANDED COPPER CONDUCTORS, BLACK PVC JACKET.
  - PCB: FR-4 FIBERGLASS, LEAD FREE, UL 94V-0 FLAMMABILITY RATING.
- ELECTRICAL CHARACTERISTICS:
  - CURRENT RATING: COLLECTIVELY 5A MAX. FOR PINS A4, A9, B4, & B9 PLUS 1.25A MAX. FOR PIN B5 WITH RETURN PATH SHARED THROUGH PINS A1, A12, B1 & B12. ADDITIONAL POSITIONS 0.25A MAX. EACH.
  - INSULATION RESISTANCE: 10 MEGOHM MINIMUM.
  - WITHSTAND VOLTAGE: 100VAC.
- ENVIRONMENTAL PROTECTION: IP67 PER IEC 60529 IN MATED CONDITION.

**AMPHENOL PART NUMBER: MRU-CMB1-6050**



UNLESS SPECIFIED OTHERWISE	DRAWN	ED.LIU	OCT08/23
PRIMARY UNITS MILLIMETERS	CHECKED	E.QU	NOV24/23
SECONDARY UNITS INCHES	M.E. APP'D		
REFERENCE IN PARENTHESES	Q.A. APP'D		
GENERAL TOLERANCES	DWG APPR.	K.LAMBIE	DEC07/23
1 DECIMAL PLACE	ENG. REL. NO.	EAR 15384	
2 DECIMAL PLACES ±0.20	REF.		
3 DECIMAL PLACES	THIRD ANGLE PROJECTION		
ANGULAR DEGREES ±5°	DO NOT SCALE DRAWING		

**Amphenol Canada Corp.**  
Commercial Products

MRU SERIES USB CABLE ASSEMBLY, TYPE C LATCH LOCK PLUG TO TYPE C STANDARD PLUG, CABLE LENGTH 0.5m, WITH OVER-MOULD, RoHS COMPLIANT

DWG. NO. **P-MRU-CMB1-6050** REV **A**

CODE ID NO. 03554 DWG SIZE: X SCALE: 1:1 SHEET 1 OF 1