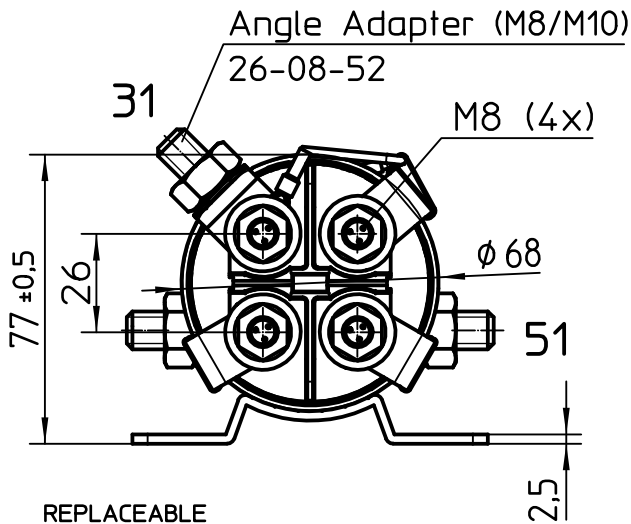
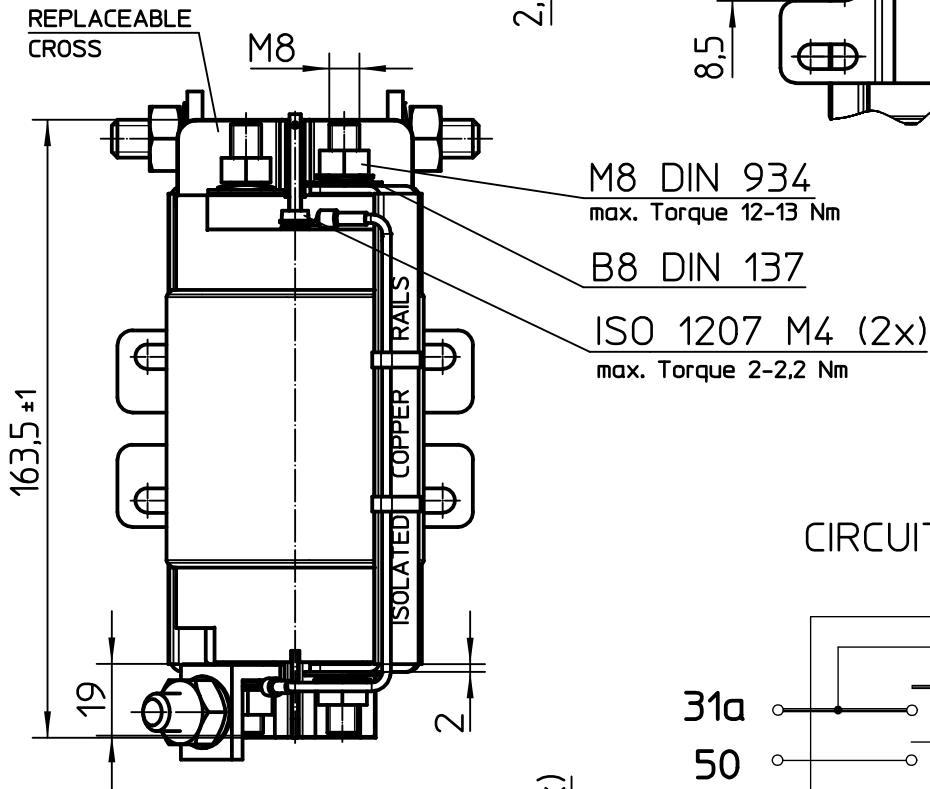
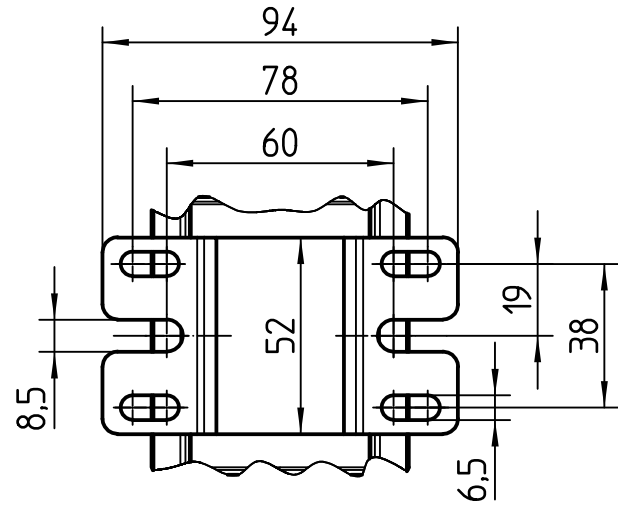


200 AMP POWER RELAY (12VDC)

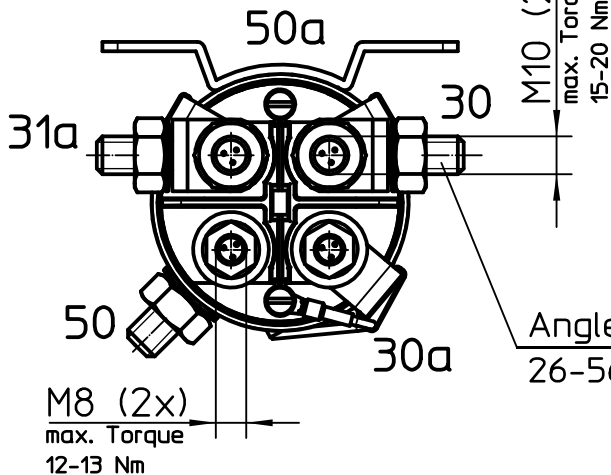
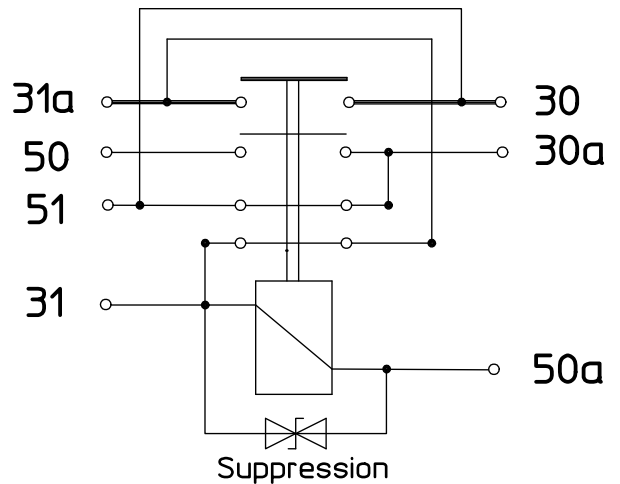
DUAL POLE CHANGEOVER-UNIT



MOUNTING DIMENSIONS:



CIRCUIT OF UNIT:



	Date	Name	mm	Scale	Drawing No:
Drawn	10.05.2007	Kaise	—	1:2	29-251-11-900
Check	04.07.2011	Kaise	General Tolerances DIN ISO 2768 cL		NSN:

200 AMP POWER RELAY (12VDC)

DUALPOLE CHANGEOVER

DISCRIPTION / APPLICATION:

Electricmagnetically switch for series- and parallel connection of two 12VDC-batteries in 12VDC-equipments by actuating with 24 VDC-starters.

Installation as near as possible of battery.

The terminals must be saved against environmental conditions.

MODE OF OPERATION:

By actuating the starter-switch or the heat-Switch on cockpit, first the batteries gets connected in series. Then the starter will get used for cranking.

After release starter-switch, the starter gets out of gear first and batteries connected in parallel again.

TECHNICAL DATA:

ENVIRONMENTAL CHARACTERISTICS

TEMPERATURE RANGE..... -40°C TO +85°C (-40°C F TO +185°F)
 SEAL..... IP67(6FEET/0,2BAR-1MIN.) I.A.W.IEC 529
 IP6K9K (STEAM PRESSURE) DIN 40050 PART 9 AND I.A.W.IEC 529
 SHOCK G-LEVEL..... 6 G/ 11 MSEC
 VIBRATION..... 4 G/ 50-2000 Hz

ELECTRICAL CHARACTERISTICS

MIN.INSULATION RESISTANCE; INITIAL..... 100 MEGOHMS
 AFTER LIFE OR ENVIRONMENTAL..... 50 MEGOHMS
 DIELECTRIC WITHSTANDING VOLTAGE SEA-LEVEL 1 MINUTE..... 1 050 VOLTS
 ALTITUDE 1 MINUTE..... 500 VOLTS
 MAX. CONTACT DROP INITIAL..... 0.15 VOLTS
 AFTER LIFE TEST..... 0.175 VOLTS
 DUTY RATING (30 - 31a)..... 200 AMP CONTINUOUS
 OVERLOAD (30 - 31a)..... 1600 AMP FOR 1 SEC, 400 AMP FOR 20 SEC
 DUTY RATING (30a /31 / 31a / 51)..... 60 AMP CONTINUOUS

RATED CONTACT LOAD

RESISTIVE LOAD..... 200 000 CYCLES
 ENDURANCE..... 1 000 000 CYCLES

OPERATING CHARACTERISTICS

COIL DATA..... 12 VDC COIL
 VOLTAGE RANGE..... 9-16 VDC
 NOMINAL VOLTAGE..... 12 VDC
 PICK UP VOLTAGE MAX. (FULL TEMP. RANGE)..... 9 VDC
 DROP OUT VOLTAGE MAX. (FULL TEMP. RANGE)..... 2 VDC
 COIL RESISTANCE (±10%)..... 4.4 OHMS
 COIL CURRENT APPROX..... 2.7 AMP
 COIL POWER APPROX..... 32 WATT
 CYCLIC DURATION FACTOR MAX. 5 MIN.


TIME-MILLISECONDS-MAX.

OPERATE..... 60
 BOUNCE..... 5
 RELEASE..... 30

WEIGHT..... 1,91 KG = 4,21 POUND MAX.

WIRE SECTION(AT NOMINAL LOAD)..... MIN. 70mm / 0,109 sq.inch

MOUNTING POSITION..... OPTIONAL

	Date	Name	mm	Scale		Drawing No:
Drawn	17.08.2009	Kaise	General Tolerances	1:2		29-251-11-900
Check	04.07.2011	Kaise				NSN: