



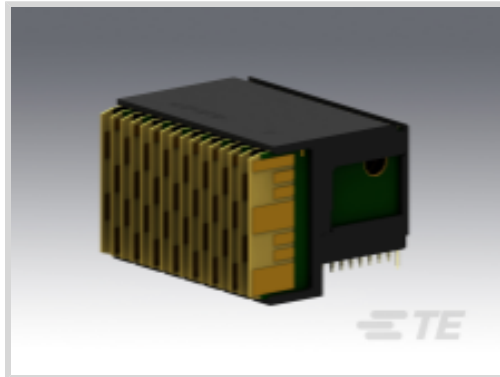
MULTIGIG RT | MULTIGIG RT 2

TE Part # 1410975-3

TE Internal #: 1410975-3

[View on TE.com >](#)

Connectors > PCB Connectors > Backplane Connectors > High Speed Connectors



Connector System: **Board-to-Board**

Number of Positions: **112**

Row-to-Row Spacing: **.053 mm [ 1.35 in ]**

Mating Alignment: **With**

Mating Alignment Type: **Polarization**

## Features

### Product Type Features

Connector System	Board-to-Board
Row-to-Row Spacing	.053 mm[1.35 in]
Connector Style	Plug
Shrouded	Fully Shrouded
Connector & Contact Terminates To	Printed Circuit Board

### Configuration Features

Card Slot Centerline	20.3 mm[.8 in]
Number of Positions	112
Number of Rows	7
Number of Columns	16
Board-to-Board Configuration	Right Angle
PCB Mount Orientation	Right Angle
Guide Location	Center

### Contact Features

Contact Current Rating (Max)	1 A
------------------------------	-----

### Mechanical Attachment

Mating Alignment	With
Mating Alignment Type	Polarization



Connector Mounting Type	Board Mount
-------------------------	-------------

**Housing Features**

Centerline (Pitch)	1.8 mm[.071 in]
--------------------	-----------------

**Usage Conditions**

Operating Temperature Range	-55 – 105 °C[-67 – 221 °F]
-----------------------------	----------------------------

**Operation/Application**

Circuit Application	Power & Signal
---------------------	----------------

**Product Compliance**

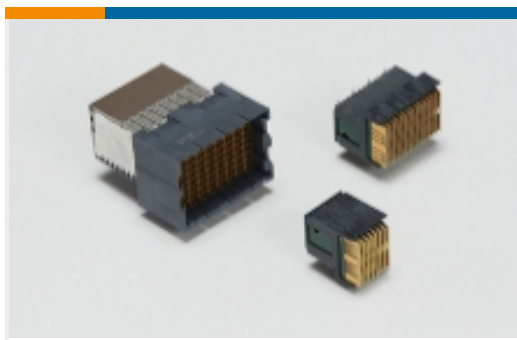
[For compliance documentation, visit the product page on TE.com>](#)

EU RoHS Directive 2011/65/EU	Not Compliant
EU ELV Directive 2000/53/EC	Not Compliant
China RoHS 2 Directive MIIT Order No 32, 2016	Restricted Materials Above Threshold
EU REACH Regulation (EC) No. 1907/2006	Current ECHA Candidate List: JAN 2019 (197) Candidate List Declared Against: JAN 2019 (197)
Halogen Content	BFR/CFR/PVC Free, but Br/Cl >900 ppm in other sources.
Solder Process Capability	Not applicable for solder process capability

Product Compliance Disclaimer

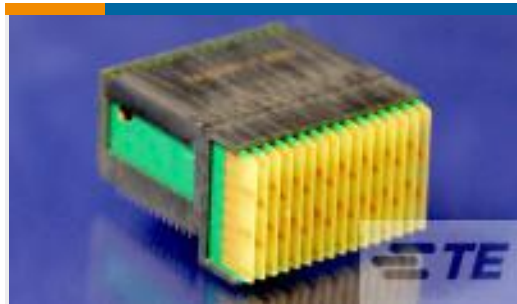
This information is provided based on reasonable inquiry of our suppliers and represents our current actual knowledge based on the information they provided. This information is subject to change. The part numbers that TE has identified as EU RoHS compliant have a maximum concentration of 0.1% by weight in homogenous materials for lead, hexavalent chromium, mercury, PBB, PBDE, DBP, BBP, DEHP, DIBP, and 0.01% for cadmium, or qualify for an exemption to these limits as defined in the Annexes of Directive 2011/65/EU (RoHS2). Finished electrical and electronic equipment products will be CE marked as required by Directive 2011/65/EU. Components may not be CE marked. Additionally, the part numbers that TE has identified as EU ELV compliant have a maximum concentration of 0.1% by weight in homogenous materials for lead, hexavalent chromium, and mercury, and 0.01% for cadmium, or qualify for an exemption to these limits as defined in the Annexes of Directive 2000/53/EC (ELV). Regarding the REACH Regulations, TE's information on SVHC in articles for this part number is still based on the European Chemical Agency (ECHA) 'Guidance on requirements for substances in articles'(Version: 2, April 2011), applying the 0.1% weight on weight concentration threshold at the finished product level. TE is aware of the European Court of Justice ruling of September 10th, 2015 also known as O5A (Once An Article Always An Article) stating that, in case of 'complex object', the threshold for a SVHC must be applied to both the product as a whole and simultaneously to each of the articles forming part of its composition. TE has evaluated this ruling based on the new ECHA "Guidance on requirements for substances in articles" (June 2017, version 4.0) and will be updating its statements accordingly.

Also in the Series | [MULTIGIG RT 2](#)



High Speed Backplane  
Connectors(41)

## Customers Also Bought



TE Part #1410968-3  
MULTIGIG RT2 7RW RTM  
DC DF CT



TE Part #1410971-3  
MULTIGIG RT T2 7RW H-  
LFT RTM



TE Part #1-6450869-4  
V/R  
2ACP+1LP+32S+3HDP+1LP+1SCREW, CUSTOMIZED  
HDW



TE Part #1410946-1  
MULTI-GIG SOC. CAP  
HDW



TE Part #1410956-1  
MULTIGIG RT GUIDE PIN  
KIT ASSEMBLY



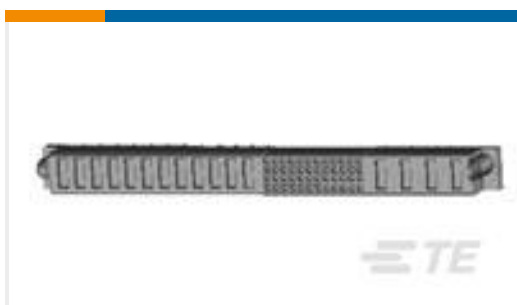
TE Part #1-1469492-8  
MULTIGIG RT 9MM GUIDE  
/ESD 315 DEG



TE Part #1-1469492-9  
MULTIGIG RT 9MM GUIDE  
/ESD UNKE



TE Part #1410187-3  
MULTIGIG RT T2 7RW DC  
DF CT



TE Part #6450863-5  
MBXLE VERT RCPT 7ACP



TE Part #6450849-7  
MBXLE R/A HED  
2ACP+1LP+32S+3HDP+1LP+1P

## Documents

### Product Drawings

MULTIGIG RT2 7RW DC RTM CT

English

### CAD Files

3D PDF

3D

Customer View Model

ENG\_CVM\_CVM\_1410975-3\_A.2d\_dxf.zip



English

Customer View Model

[ENG\\_CVM\\_CVM\\_1410975-3\\_A.3d\\_igs.zip](#)

English

Customer View Model

[ENG\\_CVM\\_CVM\\_1410975-3\\_A.3d\\_stp.zip](#)

English

---

### Datasheets & Catalog Pages

[High Speed Backplane Connectors catalog - MULTIGIG RT Connector](#)

English

---

### Product Specifications

[Application Specification](#)

English

---

### Product Environmental Compliance

[TE Material Declaration](#)

English

---

### Instruction Sheets

[Instruction Sheet \(U.S.\)](#)

English