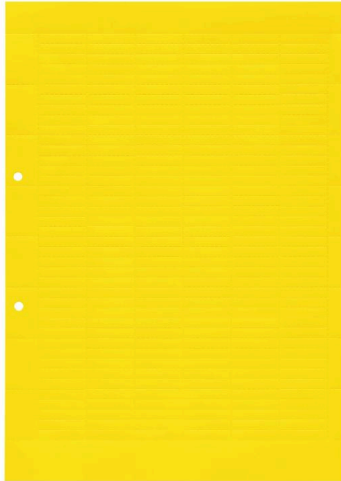


**ESO 7 DIN A4 GE**

**Weidmüller Interface GmbH & Co. KG**  
Klingenbergstraße 26  
D-32758 Detmold  
Germany

www.weidmueller.com



**General ordering data**

Version	Terminal markers, Insert markers, 27 x 6.3 mm, yellow
Order No.	<a href="#">1634780000</a>
Type	ESO 7 DIN A4 GE
GTIN (EAN)	4008190273361
Qty.	10 ST

## ESO 7 DIN A4 GE

Weidmüller Interface GmbH & Co. KG  
Klingenbergstraße 26  
D-32758 Detmold  
Germany

www.weidmueller.com

## Technical data

## Approvals

ROHS	Conform
------	---------

## Dimensions and weights

Depth	1 mm	Depth (inches)	0.0394 inch
Height	27 mm	Height (inches)	1.063 inch
Width	6.3 mm	Width (inches)	0.248 inch
Net weight	10.4 g		

## Temperatures

Operating temperature range	-40...80 °C
-----------------------------	-------------

## Environmental Product Compliance

RoHS Compliance Status	Compliant without exemption
REACH SVHC	No SVHC above 0.1 wt%

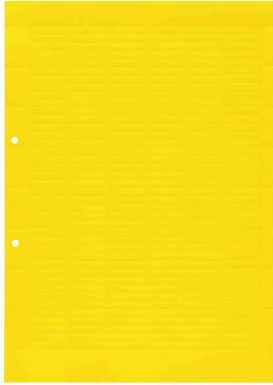
## General data

Material colour according to resistance code	4		
Orientation of print	horizontal and vertical		
Number per sheet	240		
Width	6.3 mm		
UL 94 flammability rating	HB		
Operating temperature range, max.	80 °C		
Operating temperature range, min.	-40 °C		
Colour	yellow		
Material	Paper		
Printed characters	without		
Number of markers per packaging unit	Form of supply	Label sheet	
Number of markers per combination	1 Label sheet = Insert markers		
Operating temperature range	-40...80 °C		

## Classifications

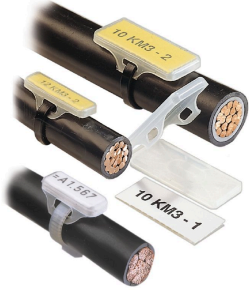
ETIM 6.0	EC000761	ETIM 7.0	EC000761
ETIM 8.0	EC000761	ETIM 9.0	EC000761
ETIM 10.0	EC000761	ECLASS 9.0	27-14-11-37
ECLASS 9.1	27-14-11-37	ECLASS 10.0	27-14-11-37
ECLASS 11.0	27-28-11-01	ECLASS 12.0	27-28-11-01
ECLASS 13.0	27-28-11-01	ECLASS 14.0	27-28-11-01
ECLASS 15.0	27-28-11-01		

**Drawings**



## Accessories

### WKM for inlay tags



The halogen-free, transparent pocket of the WKM offers outstanding protection against environmental influences. Thanks to firm fixation with cable ties, it is suitable for almost all wire cross-sections.

The pre-printed tags are simply inserted into the WKM holder and secured with a clip. WKM cable markers are the right solution for maximum efficiency in on-site marking. Your advantage when using WKM cables

- Paper and polyester labels can be printed individually with conventional office printers
- The robust design in combination with MultiCard ELS tags guarantees maximum protection against environmental influences

### General ordering data

Type	WKM 8/30	Version	
Order No.	<a href="#">1631910000</a>	WKM, Conductor and cable markers, 7 - 115 mm, 30 x 8 mm, Wire	
GTIN (EAN)	4008190206666	and cable markers, Transparent	
Qty.	50 ST		