

WPD 204 2X25/4X16+6X10 2XBK

Weidmüller Interface GmbH & Co. KG
Klingenbergstraße 26
D-32758 Detmold
Germany

www.weidmueller.com



Our WPD 1XX distribution blocks are used in all situations where power is supplied and distributed. Their user-friendly design creates a better overview and enables Rapid, efficient implementation of space-saving power distribution.

General ordering data

Version	Potential distributor terminal, Screw connection, black, 25 mm ² , 164 A, 1000 V, Number of connections: 12, Number of levels: 1
Order No.	2725390000
Type	WPD 204 2X25/4X16+6X10 2XBK
GTIN (EAN)	4050118796193
Qty.	1 ST

WPD 204 2X25/4X16+6X10 2XBK

Weidmüller Interface GmbH & Co. KG
Klingenbergstraße 26
D-32758 Detmold
Germany

www.weidmueller.com

Technical data

Approvals

Approvals



ROHS Conform

Dimensions and weights

Depth	49 mm	Depth (inches)	1.9291 inch
Height	68 mm	Height (inches)	2.6772 inch
Width	63 mm	Width (inches)	2.4803 inch
Net weight	202 g		

Temperatures

Storage temperature	-25 °C...55 °C	Ambient temperature	-5 °C...40 °C
Continuous operating temp., min.	-50 °C	Continuous operating temp., max.	130 °C

Environmental Product Compliance

RoHS Compliance Status	Compliant with exemption
RoHS Exemption (if applicable/known)	6c
REACH SVHC	Lead 7439-92-1
SCIP	e1c310ef-6b67-4efa-80a6-d307472f4de9

Material data

Material	Wemid	Colour	black
UL 94 flammability rating	V-0		

System specifications

Version	Screw connection	End cover plate required	No
Number of potentials	1	Number of levels	1
Number of clamping points per level	2	Number of potentials per tier	1
Levels cross-connected internally	Yes	Rail	Mounting plate, TS 35
N-function	No	PE function	No
PEN function	No		

Additional technical data

Open sides	closed	Explosion-tested version	Yes
Type of mounting	Snap-on		

Conductors for clamping (additional connection)

Connection type, additional connection Screw connection

Conductors for clamping (rated connection)

Wire connection cross section AWG, max.	AWG 4	Connection direction	on side
Type of connection 2	Screw connection	Type of connection	Screw connection

WPD 204 2X25/4X16+6X10 2XBK

Weidmüller Interface GmbH & Co. KG
 Klingenbergstraße 26
 D-32758 Detmold
 Germany

www.weidmueller.com

Technical data

Number of connections	12	Clamping range, max.	25 mm ²
Clamping range, min.	1.5 mm ²	Wire connection cross section AWG, min.	AWG 16
Wire connection cross-section, finely stranded with wire-end ferrules DIN 46228/1, max.	16 mm ²	Wire connection cross section, finely stranded, max.	0 mm ²
Connection cross-section, stranded, max.	25 mm ²	Wire connection cross-section, solid core, max.	25 mm ²

General

Number of poles	2	Wire connection cross section AWG, max.	AWG 4
Wire connection cross section AWG, min.	AWG 16	Standards	IEC 60947-7-1, UL 1059
Rail	Mounting plate, TS 35		

Rating data

Rated cross-section	25 mm ²	Rated voltage	1000 V
Rated AC voltage	1000 V	Rated DC voltage	1000 V
Rated current	164 A	Current at maximum wires	164 A
Standards	IEC 60947-7-1, UL 1059	Power loss in accordance with IEC 60947-7-x	2.50 W

Important note

Product information The socket complies with flammability class V-2 according to UL94.

Classifications

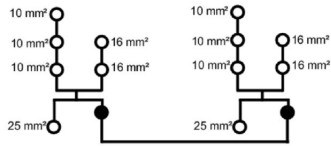
ETIM 6.0	EC000897	ETIM 7.0	EC000897
ETIM 8.0	EC000897	ETIM 9.0	EC000897
ETIM 10.0	EC000897	ECLASS 9.0	27-14-11-20
ECLASS 9.1	27-14-11-20	ECLASS 10.0	27-14-11-20
ECLASS 11.0	27-14-11-20	ECLASS 12.0	27-14-11-20
ECLASS 13.0	27-25-01-19	ECLASS 14.0	27-25-01-19
ECLASS 15.0	27-25-01-19		

WPD 204 2X25/4X16+6X10 2XBK

Weidmüller Interface GmbH & Co. KG
 Klingenbergstraße 26
 D-32758 Detmold
 Germany

www.weidmueller.com

Drawings



Conductor connection data according to IEC 60917-1 (Cu)

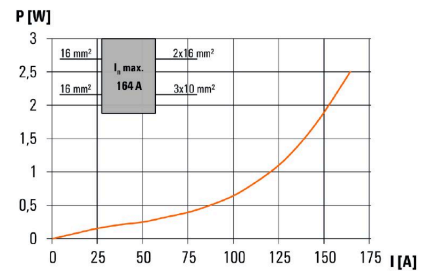
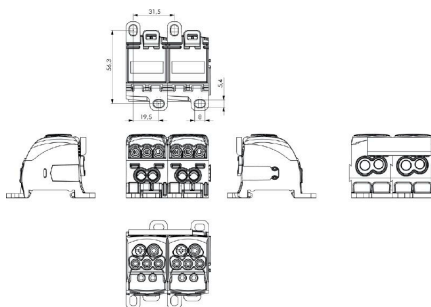
Wire	Conductor part 1		Conductor part 2	
	C 25	C 25	C 25	C 25
16 mm²	2.50	2.50	2.50	2.50
10 mm²	2.50	2.50	2.50	2.50
6 mm²	2.50	2.50	2.50	2.50
4 mm²	2.50	2.50	2.50	2.50
2.5 mm²	2.50	2.50	2.50	2.50
1.5 mm²	2.50	2.50	2.50	2.50
0.75 mm²	2.50	2.50	2.50	2.50
0.5 mm²	2.50	2.50	2.50	2.50
0.35 mm²	2.50	2.50	2.50	2.50
0.25 mm²	2.50	2.50	2.50	2.50
0.18 mm²	2.50	2.50	2.50	2.50
0.14 mm²	2.50	2.50	2.50	2.50
0.10 mm²	2.50	2.50	2.50	2.50
0.075 mm²	2.50	2.50	2.50	2.50
0.06 mm²	2.50	2.50	2.50	2.50
0.05 mm²	2.50	2.50	2.50	2.50
0.04 mm²	2.50	2.50	2.50	2.50
0.03 mm²	2.50	2.50	2.50	2.50
0.025 mm²	2.50	2.50	2.50	2.50
0.02 mm²	2.50	2.50	2.50	2.50
0.015 mm²	2.50	2.50	2.50	2.50
0.012 mm²	2.50	2.50	2.50	2.50
0.01 mm²	2.50	2.50	2.50	2.50
0.008 mm²	2.50	2.50	2.50	2.50
0.006 mm²	2.50	2.50	2.50	2.50
0.005 mm²	2.50	2.50	2.50	2.50
0.004 mm²	2.50	2.50	2.50	2.50
0.003 mm²	2.50	2.50	2.50	2.50
0.002 mm²	2.50	2.50	2.50	2.50
0.001 mm²	2.50	2.50	2.50	2.50

Conductor connection data according to UL 1009 (Al-Cu)

Wire	Conductor part 1		Conductor part 2	
	C 25	C 25	C 25	C 25
16 mm²	2.50	2.50	2.50	2.50
10 mm²	2.50	2.50	2.50	2.50
6 mm²	2.50	2.50	2.50	2.50
4 mm²	2.50	2.50	2.50	2.50
2.5 mm²	2.50	2.50	2.50	2.50
1.5 mm²	2.50	2.50	2.50	2.50
0.75 mm²	2.50	2.50	2.50	2.50
0.5 mm²	2.50	2.50	2.50	2.50
0.35 mm²	2.50	2.50	2.50	2.50
0.25 mm²	2.50	2.50	2.50	2.50
0.18 mm²	2.50	2.50	2.50	2.50
0.14 mm²	2.50	2.50	2.50	2.50
0.10 mm²	2.50	2.50	2.50	2.50
0.075 mm²	2.50	2.50	2.50	2.50
0.06 mm²	2.50	2.50	2.50	2.50
0.05 mm²	2.50	2.50	2.50	2.50
0.04 mm²	2.50	2.50	2.50	2.50
0.03 mm²	2.50	2.50	2.50	2.50
0.025 mm²	2.50	2.50	2.50	2.50
0.02 mm²	2.50	2.50	2.50	2.50
0.015 mm²	2.50	2.50	2.50	2.50
0.012 mm²	2.50	2.50	2.50	2.50
0.01 mm²	2.50	2.50	2.50	2.50
0.008 mm²	2.50	2.50	2.50	2.50
0.006 mm²	2.50	2.50	2.50	2.50
0.005 mm²	2.50	2.50	2.50	2.50
0.004 mm²	2.50	2.50	2.50	2.50
0.003 mm²	2.50	2.50	2.50	2.50
0.002 mm²	2.50	2.50	2.50	2.50
0.001 mm²	2.50	2.50	2.50	2.50

CSA Rating data according to CSA 22.2 No. 100

Wire	Conductor part 1		Conductor part 2	
	C 25	C 25	C 25	C 25
16 mm²	2.50	2.50	2.50	2.50
10 mm²	2.50	2.50	2.50	2.50
6 mm²	2.50	2.50	2.50	2.50
4 mm²	2.50	2.50	2.50	2.50
2.5 mm²	2.50	2.50	2.50	2.50
1.5 mm²	2.50	2.50	2.50	2.50
0.75 mm²	2.50	2.50	2.50	2.50
0.5 mm²	2.50	2.50	2.50	2.50
0.35 mm²	2.50	2.50	2.50	2.50
0.25 mm²	2.50	2.50	2.50	2.50
0.18 mm²	2.50	2.50	2.50	2.50
0.14 mm²	2.50	2.50	2.50	2.50
0.10 mm²	2.50	2.50	2.50	2.50
0.075 mm²	2.50	2.50	2.50	2.50
0.06 mm²	2.50	2.50	2.50	2.50
0.05 mm²	2.50	2.50	2.50	2.50
0.04 mm²	2.50	2.50	2.50	2.50
0.03 mm²	2.50	2.50	2.50	2.50
0.025 mm²	2.50	2.50	2.50	2.50
0.02 mm²	2.50	2.50	2.50	2.50
0.015 mm²	2.50	2.50	2.50	2.50
0.012 mm²	2.50	2.50	2.50	2.50
0.01 mm²	2.50	2.50	2.50	2.50
0.008 mm²	2.50	2.50	2.50	2.50
0.006 mm²	2.50	2.50	2.50	2.50
0.005 mm²	2.50	2.50	2.50	2.50
0.004 mm²	2.50	2.50	2.50	2.50
0.003 mm²	2.50	2.50	2.50	2.50
0.002 mm²	2.50	2.50	2.50	2.50
0.001 mm²	2.50	2.50	2.50	2.50



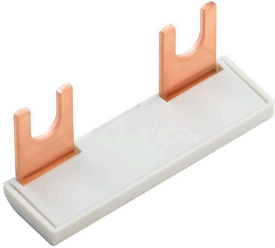
WPD 204 2X25/4X16+6X10 2XBK

Weidmüller Interface GmbH & Co. KG
Klingenbergstraße 26
D-32758 Detmold
Germany

www.weidmueller.com

Accessories

Cross connection



General ordering data

Type	WQB WPD X04/2	Version	
Order No.	1561980000	Cross-connector (terminal), Plugged, grey, 135 A, Number of poles: 2,	
GTIN (EAN)	4050118367317	Pitch in mm (P): 31.50, Insulated: Yes, Width: 49.3 mm	
Qty.	20 ST		
Type	WQB WPD X04/3	Version	
Order No.	1561990000	Cross-connector (terminal), Plugged, grey, 135 A, Number of poles: 3,	
GTIN (EAN)	4050118367324	Pitch in mm (P): 31.50, Insulated: Yes, Width: 80.2 mm	
Qty.	20 ST		

Socket wrench sets

Allen key made from fully hardened, high-alloy chromium-vanadium- steel, acc. to DIN ISO 2936 L (DIN 911), high-quality refined surface.



General ordering data

Type	SKS 2,0-8,0 MR	Version	
Order No.	9008870000	socket wrenches	
GTIN (EAN)	4032248266623		
Qty.	1 ST		

Crosshead screwdriver Pozidriv



Crosshead screwdriver, Pozidriv, SDK PZ DIN 5262, ISO 8764/2-PZ, output to ISO 8764/1-PZ, ChromTop tip, SoftFinish grip

WPD 204 2X25/4X16+6X10 2XBK

Weidmüller Interface GmbH & Co. KG
Klingenbergstraße 26
D-32758 Detmold
Germany

www.weidmueller.com

Accessories

General ordering data

Type	SDK PZ2	Version	
Order No.	9008540000	Screwdriver, Screwdriver	
GTIN (EAN)	4032248056538		
Qty.	1 ST		