

# GR343DD7LP334KW01#

● In Production

High Effective Capacitance & High Ripple Current Chip Multilayer Ceramic Capacitors for Consumer Electronics & Industrial Equipment

**GR343DD7LP334KW01#**

“#” at the end indicates the package specification code.



GR343DD7LP334KW01L,GR343DD7LP334KW01K

## Applications

Unsuitable Applications	Please be sure to read and comply with these " <u>Precautions for use</u> ".
Specific Applications	<u>Consumer equipment,Industrial Equipment,Automotive infotainment/comfort equipment,Medical equipment [GHTF A/B/C] except for implant equipment,Mobile Electronics</u> Please refer to Our Website and specifications, etc. for information about the performance, functions, quality, management, and safety required for the above applications, and use Products after confirming the performance and reliability of the actual Product.

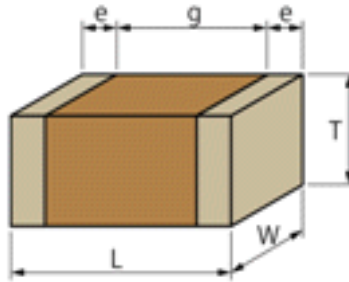
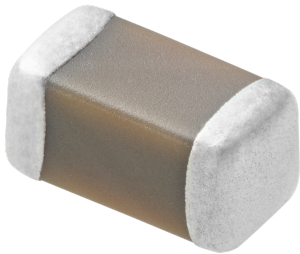
### Attention

1. This datasheet is downloaded from the website of Murata Manufacturing Co., Ltd. Therefore, it's specifications are subject to change or our products in it may be discontinued without advance notice. Please check with our sales representatives or product engineers before ordering.
2. This datasheet has only typical specifications because there is no space for detailed specifications. Therefore, please review our product specifications or consult the approval sheet for product specifications before ordering.

# GR343DD7LP334KW01#

“4” at the end indicates the package specification code.

## Appearance & Shape



Chip size code (mm/inch)	4532M/1812
Length	4.5mm $\pm$ 0.4mm
Width	3.2mm $\pm$ 0.3mm
Thickness	2mm +0mm/-0.3mm
External terminal size€	0.3mm Min.

### Attention

1. This datasheet is downloaded from the website of Murata Manufacturing Co., Ltd. Therefore, it's specifications are subject to change or our products in it may be discontinued without advance notice. Please check with our sales representatives or product engineers before ordering.
2. This datasheet has only typical specifications because there is no space for detailed specifications. Therefore, please review our product specifications or consult the approval sheet for product specifications before ordering.

# GR343DD7LP334KW01#

“4” at the end indicates the package specification code.

## Specifications

Temperature characteristics (complied standard)	EIA
Temperature characteristics	X7T

### Attention

1. This datasheet is downloaded from the website of Murata Manufacturing Co., Ltd. Therefore, it's specifications are subject to change or our products in it may be discontinued without advance notice. Please check with our sales representatives or product engineers before ordering.
2. This datasheet has only typical specifications because there is no space for detailed specifications. Therefore, please review our product specifications or consult the approval sheet for product specifications before ordering.

# GR343DD7LP334KW01#


“4” at the end indicates the package specification code.

Temperature range of temperature characteristics	-55 ~ 125°C
Operating Temperature	-55 ~ 125°C
Capacitance	0.33μF
Tolerance of capacitance	±10%
Rated Voltage DC	450Vdc

## Notices

Large capacitance and high allowable ripple current

## References

Packaging	Specifications 	Standard Packing Quantity
L	φ180mm Reel Embossed Tape	1000
K	φ330mm Reel Embossed Tape	4000

Mass(Typ.)	
1 piece	150mg

## Attention

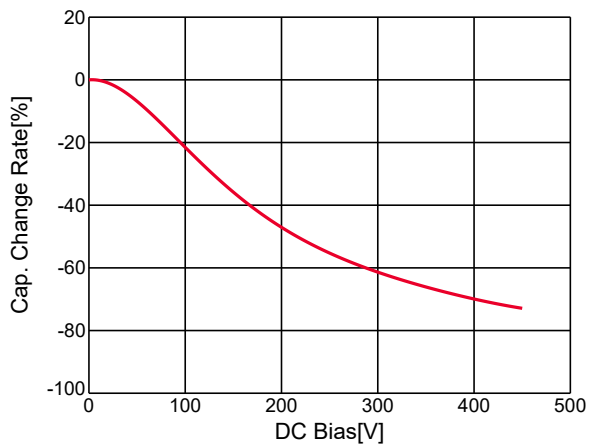
1. This datasheet is downloaded from the website of Murata Manufacturing Co., Ltd. Therefore, it's specifications are subject to change or our products in it may be discontinued without advance notice. Please check with our sales representatives or product engineers before ordering.
2. This datasheet has only typical specifications because there is no space for detailed specifications. Therefore, please review our product specifications or consult the approval sheet for product specifications before ordering.

# GR343DD7LP334KW01#

“4” at the end indicates the package specification code.

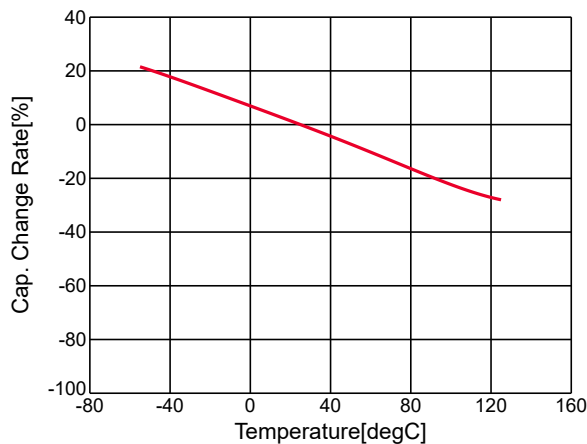
## Basic

### C-DC bias(Cap Change)



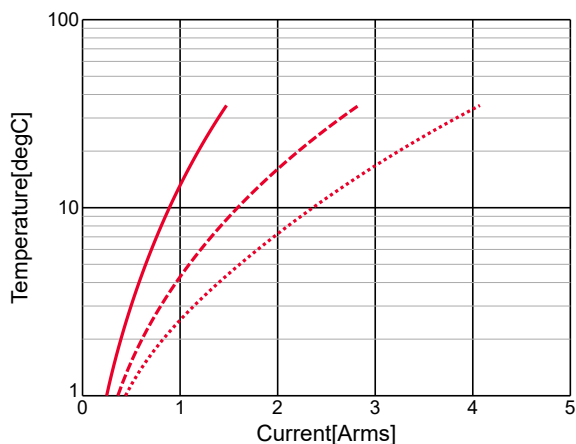
GR343DD7LP334KW01#,C-DC bias,capchange, 25.0degC, AC1Vrms

### C-Temp.(Cap Change)



GR343DD7LP334KW01#,C-Temp.,capchange, DCOV, AC1Vrms

### Temp.rise



## Attention

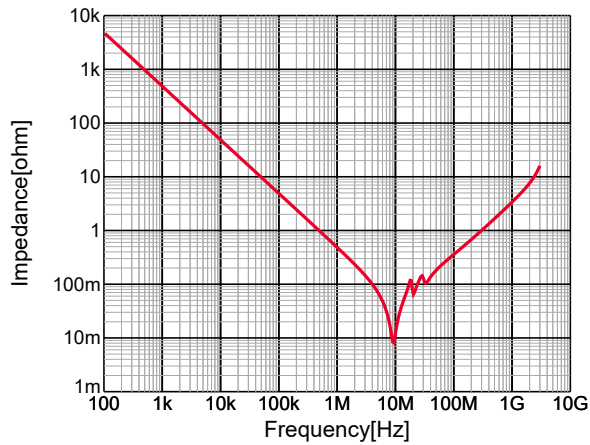
1. This datasheet is downloaded from the website of Murata Manufacturing Co., Ltd. Therefore, it's specifications are subject to change or our products in it may be discontinued without advance notice. Please check with our sales representatives or product engineers before ordering.
2. This datasheet has only typical specifications because there is no space for detailed specifications. Therefore, please review our product specifications or consult the approval sheet for product specifications before ordering.

# GR343DD7LP334KW01#

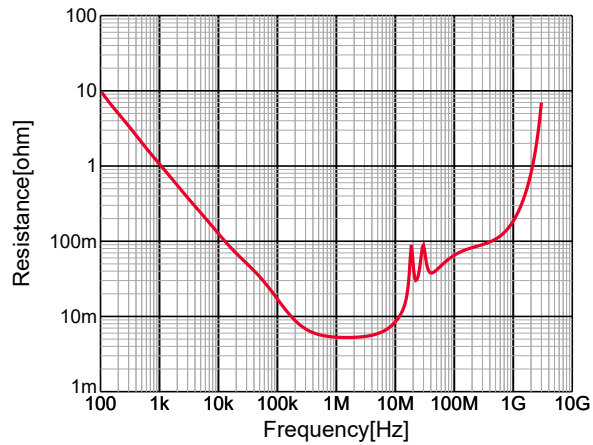
"4" at the end indicates the package specification code.

## Frequency Characteristic

|Z|



R

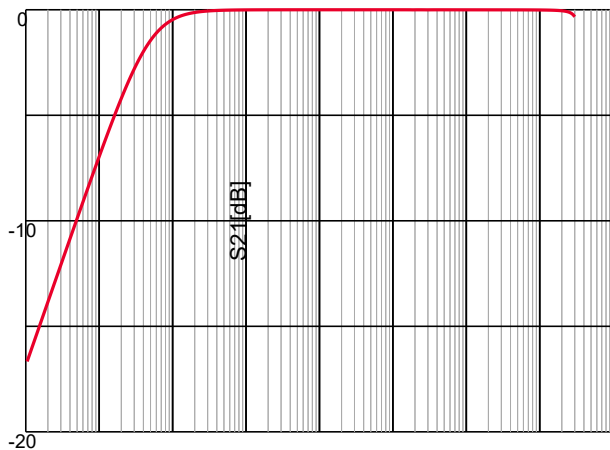


GR343DD7LP334KW01#,|Z|,DC0V,25degC

GR343DD7LP334KW01#,R,DC0V,25degC

## S-parameter

S21



### Attention

1. This datasheet is downloaded from the website of Murata Manufacturing Co., Ltd. Therefore, it's specifications are subject to change or our products in it may be discontinued without advance notice. Please check with our sales representatives or product engineers before ordering.
2. This datasheet has only typical specifications because there is no space for detailed specifications. Therefore, please review our product specifications or consult the approval sheet for product specifications before ordering.