

2.4 GHz to 5.85 GHz Dual Band Antenna, Monopole,
90-degree angle, SMA Male Connector, 2.1 and 5.47 dBi Gain



LCANRBD1042

Features

- 2400-2500 / 5150-5850 MHz, 2.1/5.47 dBi Gain
- 90-degree SMA male connector
- Plug and play
- VSWR < 2.5:1
- Linear polarization
- Monopole antenna

Applications

- 2.4/5 GHz Wi-Fi and ISM applications
- WLAN applications
- IOT, Wireless audio/video systems
- Home automation
- Telemetry, remote monitoring
- Wireless data acquisition
- 802.11 a/b/g/n/ax/ac, wireless hotspots
- PtP and PtMP applications
- 5G bands: n53, n46
- 4G LTE bands: B252, B255, B46

Description

The L-com LCANRBD1042 is an omni antenna operating from 2.4 GHz to 5.85 GHz with 2.1 dBi and 5.47 dBi gain. The SMA male connector on the communication antenna enables it to be used vertically, at a right angle, or at any angle in between. Our rubber duck antenna is 0.93 inches wide, 4.33 inches long, and 0.93 inches tall. Our omni antenna is specifically stocked to be available for same business day shipment.

This monopole omnidirectional antenna has a linear polarization, an SMA male connector and an TPEE radome material. Our 2.1 dBi gain LCANRBD1042 antenna transmits high power signals, increasing the signal strength, thus providing improved coverage, better broadcast control, and faster speed. The double band antenna has a gain of 2.1 dBi for the 2.4 GHz to 2.5 GHz frequency range and a gain of 5.47 dBi for the 5.15 GHz to 5.85 GHz frequency range. Our black omnidirectional antenna functions between -40 to 65 degrees C and has 50 Ohm impedance.

L-com WiFi antenna is ideal for 2.4/5 GHz Wi-Fi and ISM applications, WLAN, Bluetooth, IOT, wireless audio/video systems, home automation, telemetry, remote monitoring, wireless data acquisition, 802.11 a/b/g/n/ax, wireless hotspots, PtP and PtMP applications. These 2.1 dBi antennas have a waterproof design, a high power handling capacity, and IP66 ingress protection rating. Our high-quality LCANRBD1042 omnidirectional antenna has a maximum input VSWR of 2.5:1, which results in the best power transfer and reduced losses.

The 2.1 dBi gain omni directional antenna is just one of many fiber optic products that are available from L-com for international and domestic orders. We are a global leader in wired and wireless connectivity products, offering a wide range of solutions across many key industries, including electronics, medical, industrial automation, military, and telecommunication. L-com also stocks a wide selection of 2.4 GHz to 5.85 GHz antennas that ship same-day from our warehouse.

Configuration

Design	Rubber Duck
Band Type	Multi
Radiation Pattern	Omni Directional
Polarization	Linear
Connector Type	SMA Male

Click the following link (or enter part number in "SEARCH" on website) to obtain additional part information including price, inventory and certifications:
[2.4 GHz to 5.85 GHz Dual Band Antenna, Monopole, 90-degree angle, SMA Male Connector, 2.1 and 5.47 dBi Gain LCANRBD1042](#)

2.4 GHz to 5.85 GHz Dual Band Antenna, Monopole,
90-degree angle, SMA Male Connector, 2.1 and 5.47 dBi Gain



LCANRBD1042

Electrical Specifications

Description	Minimum	Typical	Maximum	Units
Frequency Range	2,400		5,850	MHz
Input VSWR			2.5:1	
Impedance		50		Ohms
Input Power			10	Watts

Specifications by Band

Description	Band 1	Band 2	Band 3	Band 4	Band 5	Units
Range	2.4-2.5	5.15-5.85				GHz
Gain	2.1	5.47				dBi

Mechanical Specifications

Radome Material	TPEE
Size	
Length	4.33 in [109.98 mm]
Width	0.93 in [23.62 mm]
Height	0.93 in [23.62 mm]
Weight	0.0242 lbs [10.98 g]

Environmental Specifications

Temperature	
Operating Range	-40 to +65 deg C
Storage Range	-40 to +80 deg C
Environment	Waterproof
Ingress Protection	IP66

Compliance Certifications (see [product page](#) for current document)

Plotted and Other Data

Notes:

2.4 GHz to 5.85 GHz Dual Band Antenna, Monopole, 90-degree angle, SMA Male Connector, 2.1 and 5.47 dBi Gain from L-com has same day shipment for domestic and International orders. Our portfolio includes coaxial cable assemblies, connectors, adapters and custom products as well as lightning and surge protectors, NEMA rated enclosures, and an RF product line which includes antennas,

2.4 GHz to 5.85 GHz Dual Band Antenna, Monopole,
90-degree angle, SMA Male Connector, 2.1 and 5.47 dBi Gain

LCANRBD1042

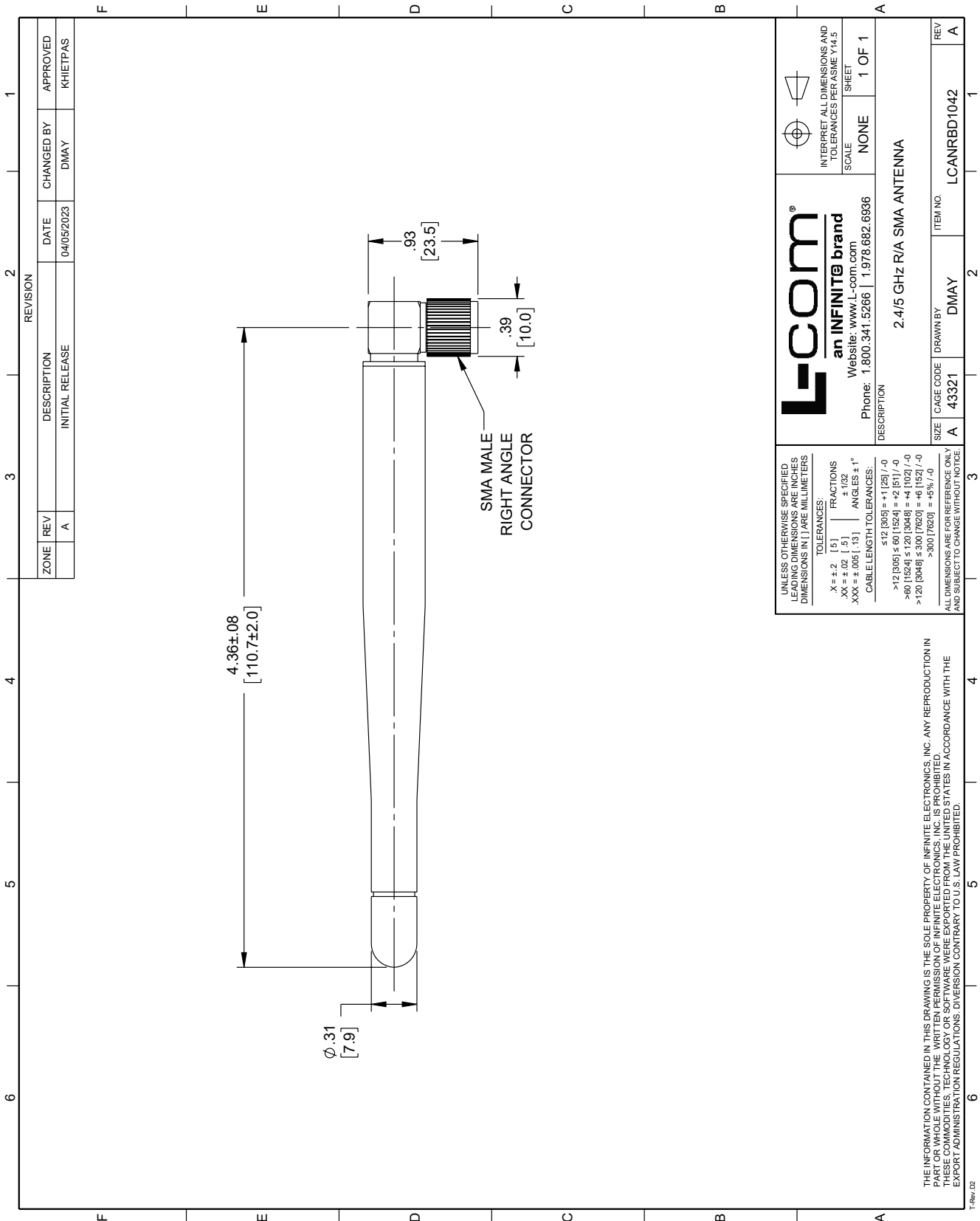


amplifiers, passive, and active components.

The information contained within this document is accurate to the best of our knowledge and representative of the part described herein. It may be necessary to make modifications to the part and/or the documentation of the part in order to implement improvements. L-com reserves the right to make such changes as required. Unless otherwise stated, all specifications are nominal. L-com does not make any representation or warranty regarding the suitability of the part described herein for any particular purpose, and L-com does not assume liability arising out of the use of any part or document.

2.4 GHz to 5.85 GHz Dual Band Antenna, Monopole, 90-degree angle,
SMA Male Connector, 2.1 and 5.47 dBi Gain

L-com CAD Drawing



L-com
an INFINITE brand
Website: www.L-com.com
Phone: 1.800.341.5266 | 1.978.682.6936

INTERPRET ALL DIMENSIONS AND TOLERANCES PER ASME Y14.5
SCALE NONE
SHEET 1 OF 1

DESCRIPTION
2.4/5 GHz R/A SMA ANTENNA

SIZE A CAGE CODE A 43321 DRAWN BY DMAY ITEM NO. LCANRBD1042

REV A