



Part Number : [398804302](#)

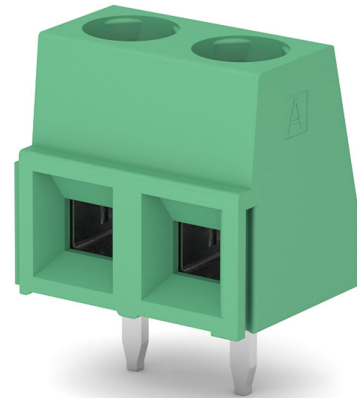
Product Description : 5.00mm Pitch Eurostyle Vertical Fixed Mount PCB Terminal Block, Green Housing, Low Profile, 2 Circuits

Series Number : 39880

Status : Active

Product Category : Terminal Blocks and Barrier Strip

Engineering Number : MX-MSB02005




Documents & Resources

Drawings

[398804302_sd.pdf](#)

Product Environment Compliance

Compliance

| | |
|--------------------|---|
| GADSL/IMDS | Not Relevant |
| China RoHS |  |
| EU ELV | Not Relevant |
| Low-Halogen Status | Low-Halogen per IEC 61249-2-21 |
| REACH SVHC | Contains Lead per ED/88/2018 (15 January 2019) |
| EU RoHS | Compliant with Exemption 6(c) per EU 2015/863 |

Multiple Part Product Compliance Statements

- Eu RoHS
- REACH SVHC
- Low-Halogen

Multiple Part Industry Compliance Documents

- IPC 1752A Class C
- IPC 1752A Class D
- Molex Product Compliance Declaration
- IEC-62474

Part Details

General

| | |
|----------------|--|
| Status | Active |
| Category | Terminal Blocks and Barrier Strip |
| Series | 39880 |
| Description | 5.00mm Pitch Eurostyle Vertical Fixed Mount PCB Terminal Block, Green Housing, Low Profile, 2 Circuits |
| Application | Wire-to-Board |
| Component Type | One Piece |
| Product Name | Eurostyle Fixed Mount |
| Type | PCB Terminal Blocks and Connectors |
| UPC | 822348448067 |

Agency

| | |
|-----|---------|
| CSA | LR25562 |
| UL | E48521 |

Electrical

| | |
|-------------------------------|-------|
| Current - Maximum per Contact | 13.5A |
| Voltage - Maximum | 300V |

Physical

| | |
|---------------------------|--------------|
| Circuits (Loaded) | 2 |
| Circuits (maximum) | 2 |
| Color - Resin | Green |
| Entry Angle | Horizontal |
| Flammability | 94V-0 |
| Lock to Mating Part | None |
| Material - Metal | Copper Alloy |
| Material - Plating Mating | Tin |

| | |
|-------------------------------|--------------------------------|
| Material - Resin | Polyamide |
| Net Weight | 1.780/g |
| Number of Rows | 1 |
| Orientation | Vertical |
| Panel Mount | No |
| PC Tail Length | 3.50mm |
| PCB Retention | Yes |
| PCB Thickness - Recommended | 0.093mm max |
| Pitch - Mating Interface | 5.08mm |
| Pitch - Termination Interface | 5.08mm |
| Polarized to Mating Part | N/A |
| Shrouded | Fully |
| Stackable | No |
| Temperature Range - Operating | -40° to +105°C |
| Wire Size (AWG) | 16, 18, 20, 22, 24, 26, 28, 30 |