



Part Number : [397730003](#)

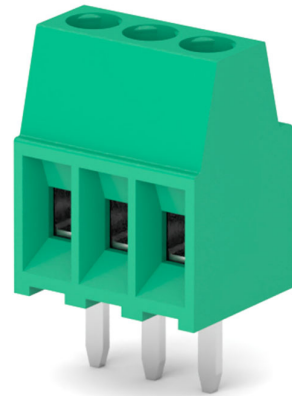
Product Description : 2.54mm Pitch Beau Eurostyle Fixed Mount PCB Terminal Block, Green, 3 Circuits

Series Number : 39773

Status : Active

Product Category : Terminal Blocks and Barrier Strip

Engineering Number : MX-MSD03004



---

## Documents & Resources

### Drawings

[397730003\\_sd.pdf](#)


### 3D Models and Design Files

[397730003\\_stp.zip](#)

---

## Product Environment Compliance

### Compliance

GADSL/IMDS	Not Relevant
China RoHS	
EU ELV	Not Relevant
Low-Halogen Status	Low-Halogen per IEC 61249-2-21
REACH SVHC	Contains Lead per D(2024)6225-DC (07 Nov 2024)
EU RoHS	Compliant with Exemption 6(c) per EU 2015/863

### Multiple Part Product Compliance Statements

- Eu RoHS
- REACH SVHC
- Low-Halogen

### Multiple Part Industry Compliance Documents

- IPC 1752A Class C

- IPC 1752A Class D
- Molex Product Compliance Declaration
- IEC-62474
- chemSHERPA (xml)

EU RoHS Certificate of Compliance

---

## Part Details

### General

Status	Active
Category	Terminal Blocks and Barrier Strip
Series	39773
Description	2.54mm Pitch Beau Eurostyle Fixed Mount PCB Terminal Block, Green, 3 Circuits
Application	Wire-to-Board
Component Type	One Piece
Product Name	Eurostyle Fixed Mount
Type	PCB Terminal Blocks and Connectors
UPC	78172560834

### Electrical

Current - Maximum per Contact	10.0A
Voltage - Maximum	150V

### Physical

Circuits (Loaded)	3
Circuits (maximum)	3
Color - Resin	Green
Entry Angle	Horizontal
Lock to Mating Part	None
Material - Metal	Copper Alloy
Material - Plating Mating	Tin
Material - Resin	Nylon
Number of Rows	1
Orientation	Vertical

Panel Mount	No
PC Tail Length	3.40mm
PCB Retention	None
PCB Thickness - Recommended	2.40mm
Pitch - Mating Interface	2.54mm
Pitch - Termination Interface	2.54mm
Polarized to Mating Part	N/A
Shrouded	Fully
Stackable	Yes
Temperature Range - Operating	-40° to +110°C
Wire Size (AWG)	16, 18, 20, 22, 24, 26, 28, 30
Wire Size mm <sup>2</sup>	0.05-1.31

---

This document was generated on Mar 06, 2025