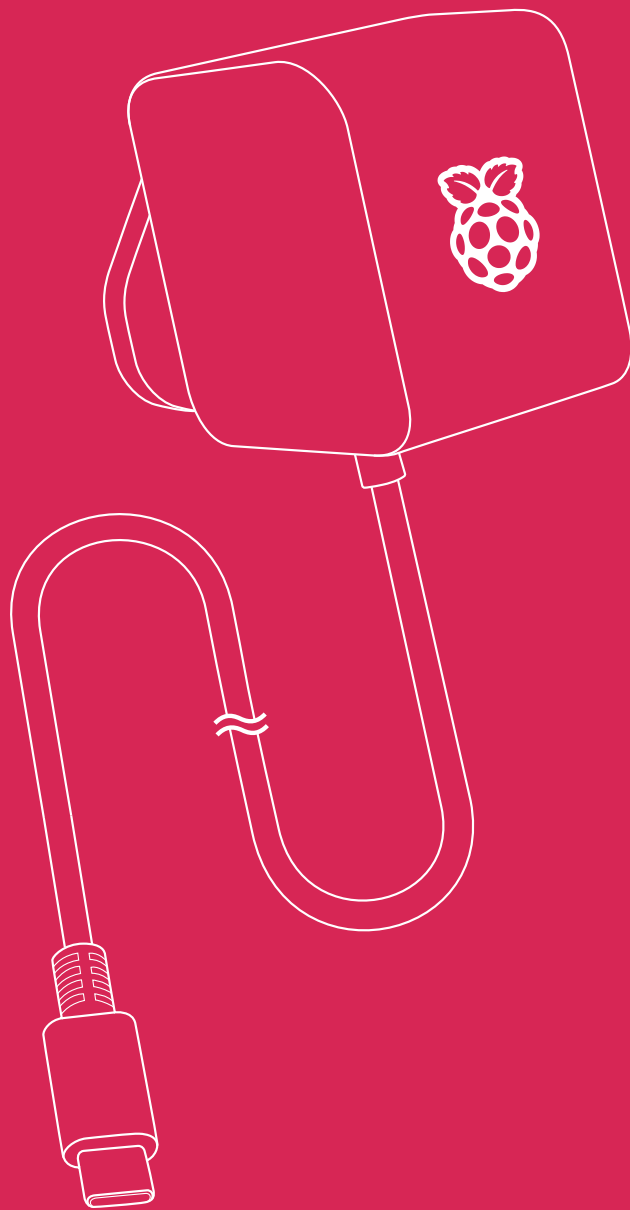




# Raspberry Pi

## 45W USB-C Power Supply

Published April 2025



## Overview



The Raspberry Pi 45W USB-C Power Supply is an ideal power supply for USB-C powered Raspberry Pi products. It is especially suitable for Raspberry Pi 5 users who wish to drive high-power peripherals, such as hard drives and SSDs.

Delivering a maximum of 5.1V, 5A, it supports USB PD (Power Delivery) negotiation, so Raspberry Pi 5 can communicate with it and select the most appropriate power profile. This enables Raspberry Pi 5 to increase the USB current limit automatically from the default 600mA to 1.6A, in order to provide extra power for devices connected to the four Type A USB ports.

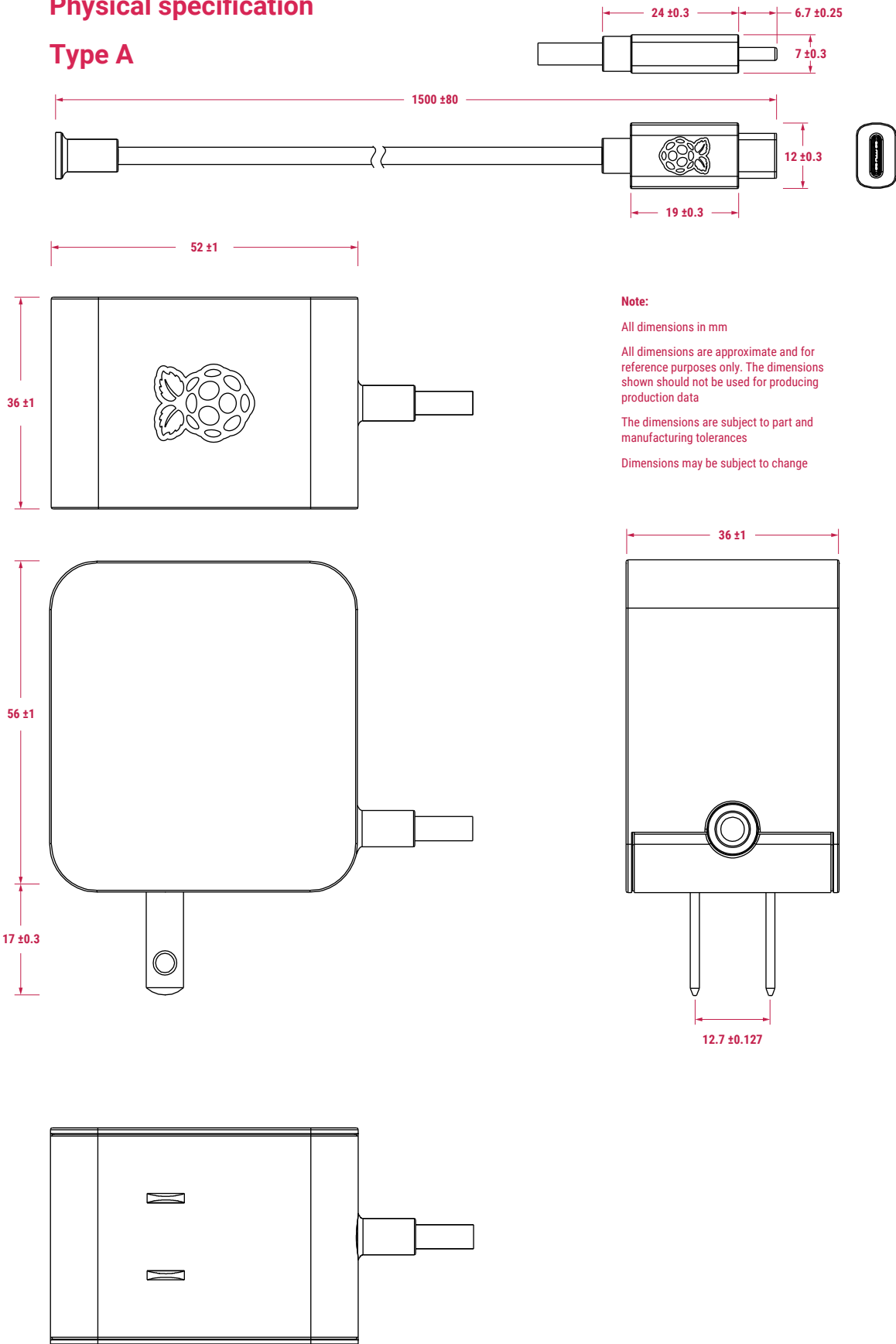
An extended range of built-in power profiles mean the Raspberry Pi 45W USB-C Power Supply is also an excellent option for powering third-party PD-compatible products such as smartphones, tablets and laptop computers. The available profiles are 9V, 5A; 12V, 3.75A; 15V, 3A; and 20V, 2.25A, all limited to a maximum of 45W.

## Specification

<b>Input:</b>	100 – 240Vac
<b>Output:</b>	5.1V, 5.0A; 9.0V, 5.0A; 12.0V, 3.75A; 15.0V, 3.0A; 20.0V, 2.25A (Power Delivery)
<b>Connector:</b>	USB-C
<b>Cable:</b>	1.5m 17AWG, white
<b>Plug types:</b>	<ul style="list-style-type: none"><li>• US, Canada (type A)</li><li>• Europe (type C)</li><li>• India (type D)</li><li>• UK (type G)</li><li>• Australia, New Zealand (type I)</li></ul>
<b>Production lifetime:</b>	The Raspberry Pi 45W USB-C Power Supply will remain in production until at least January 2035
<b>Compliance:</b>	For a full list of local and regional product approvals, please visit <a href="http://pip.raspberrypi.com">pip.raspberrypi.com</a>

## Physical specification

### Type A



**Note:**

All dimensions in mm

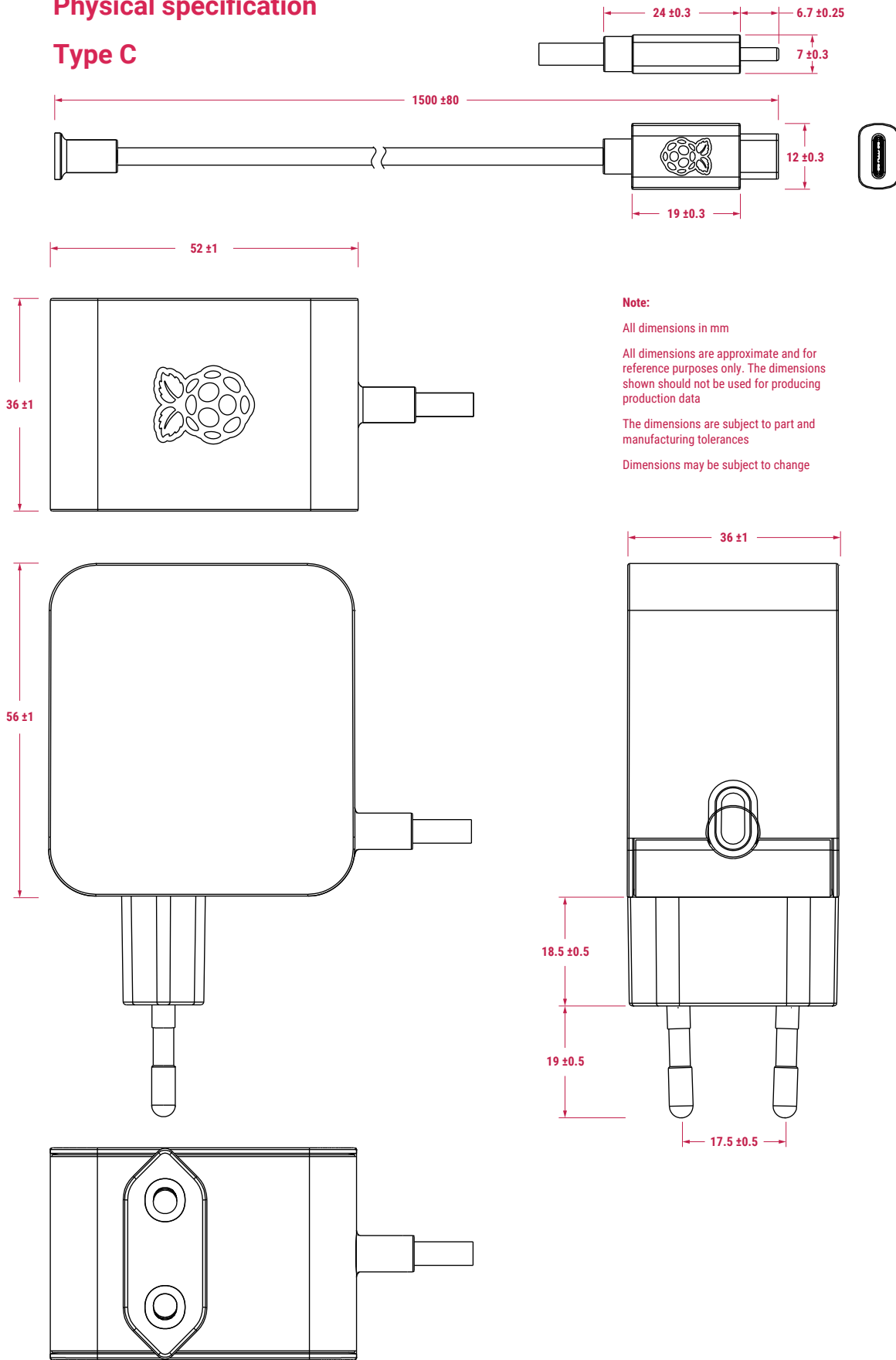
All dimensions are approximate and for reference purposes only. The dimensions shown should not be used for producing production data

The dimensions are subject to part and manufacturing tolerances

Dimensions may be subject to change

# Physical specification

## Type C

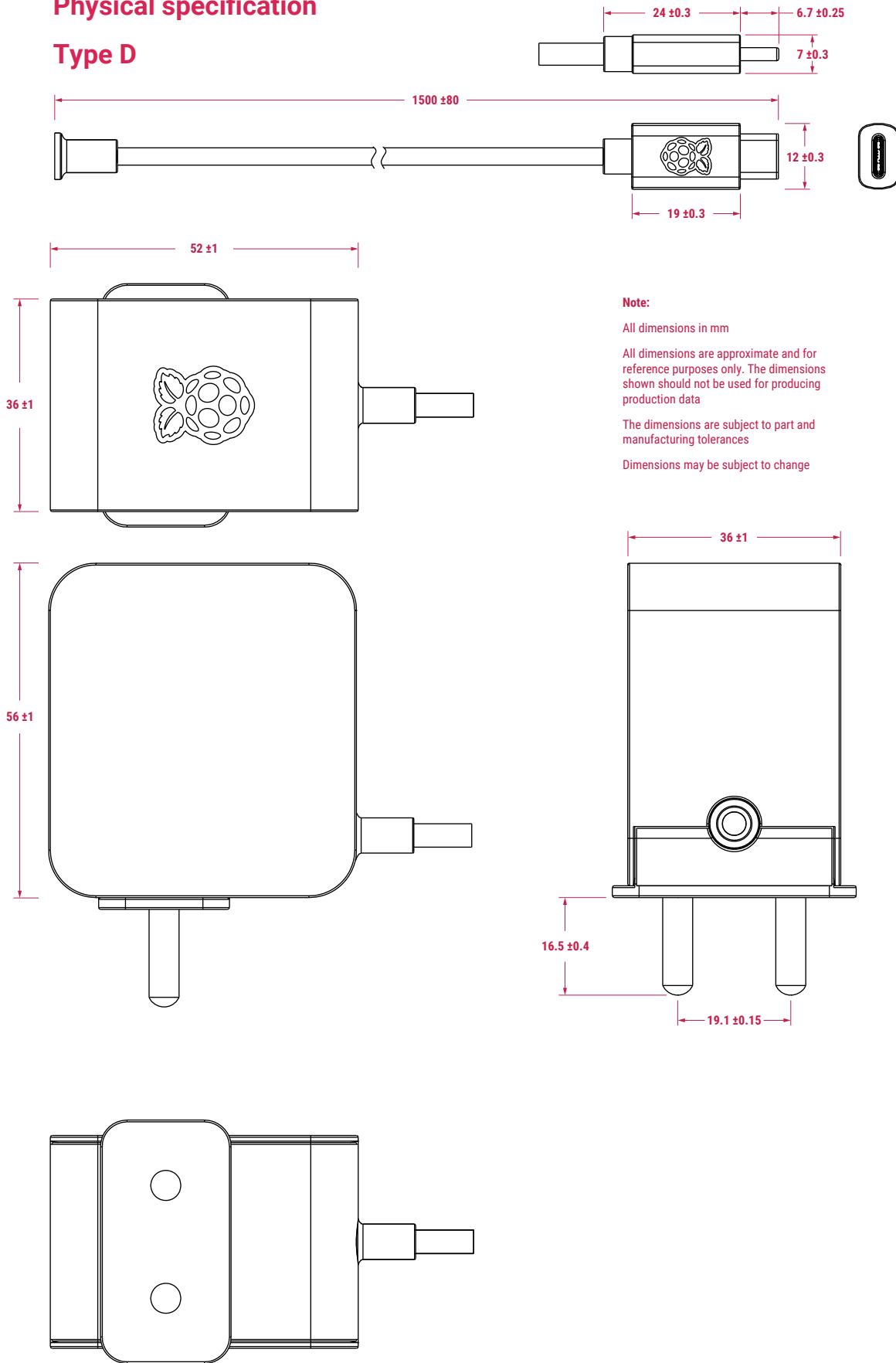


**Note:**

All dimensions in mm  
All dimensions are approximate and for reference purposes only. The dimensions shown should not be used for producing production data  
The dimensions are subject to part and manufacturing tolerances  
Dimensions may be subject to change

# Physical specification

## Type D



**Note:**

All dimensions in mm

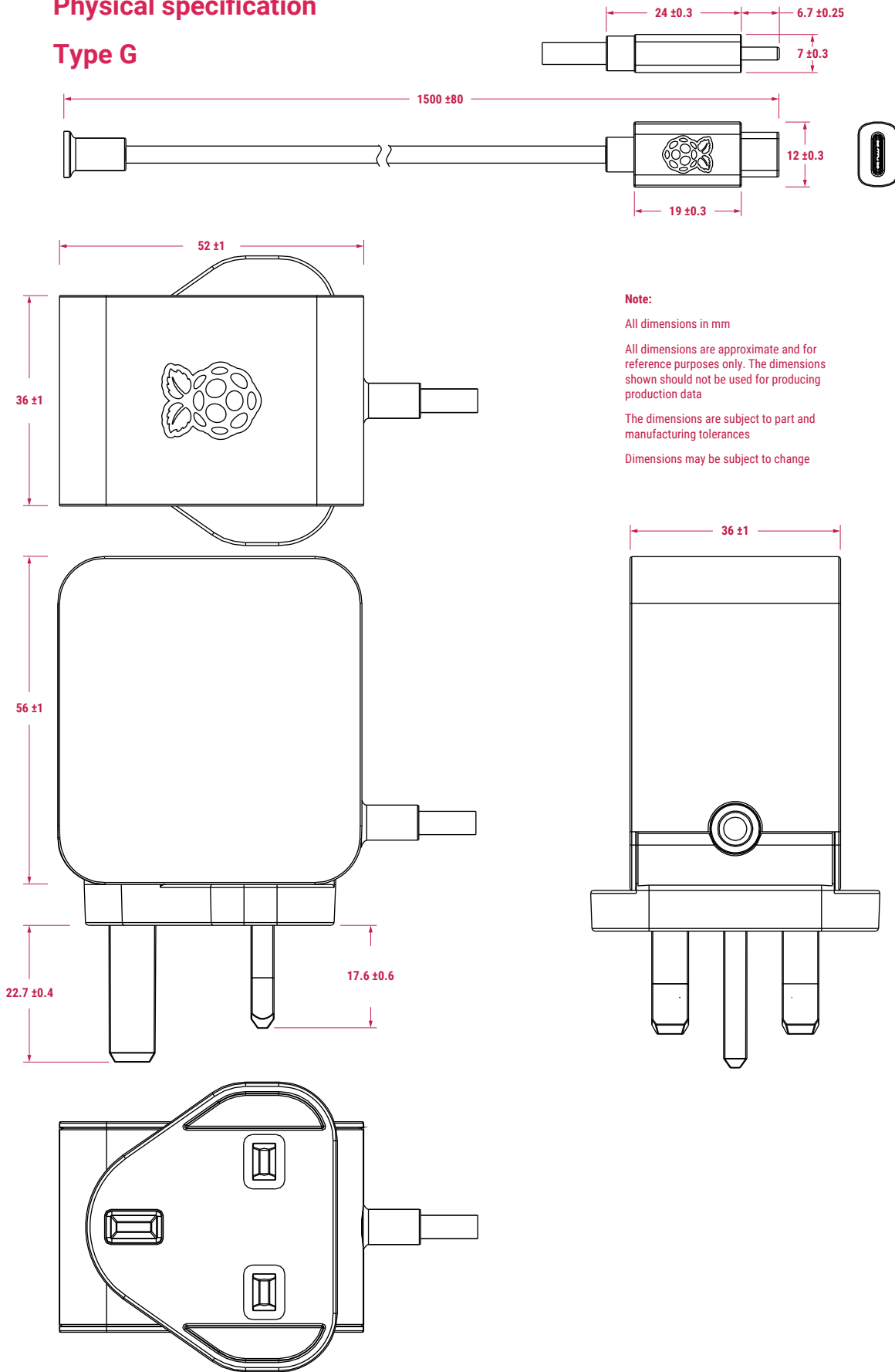
All dimensions are approximate and for reference purposes only. The dimensions shown should not be used for producing production data

The dimensions are subject to part and manufacturing tolerances

Dimensions may be subject to change

# Physical specification

## Type G



**Note:**

All dimensions in mm

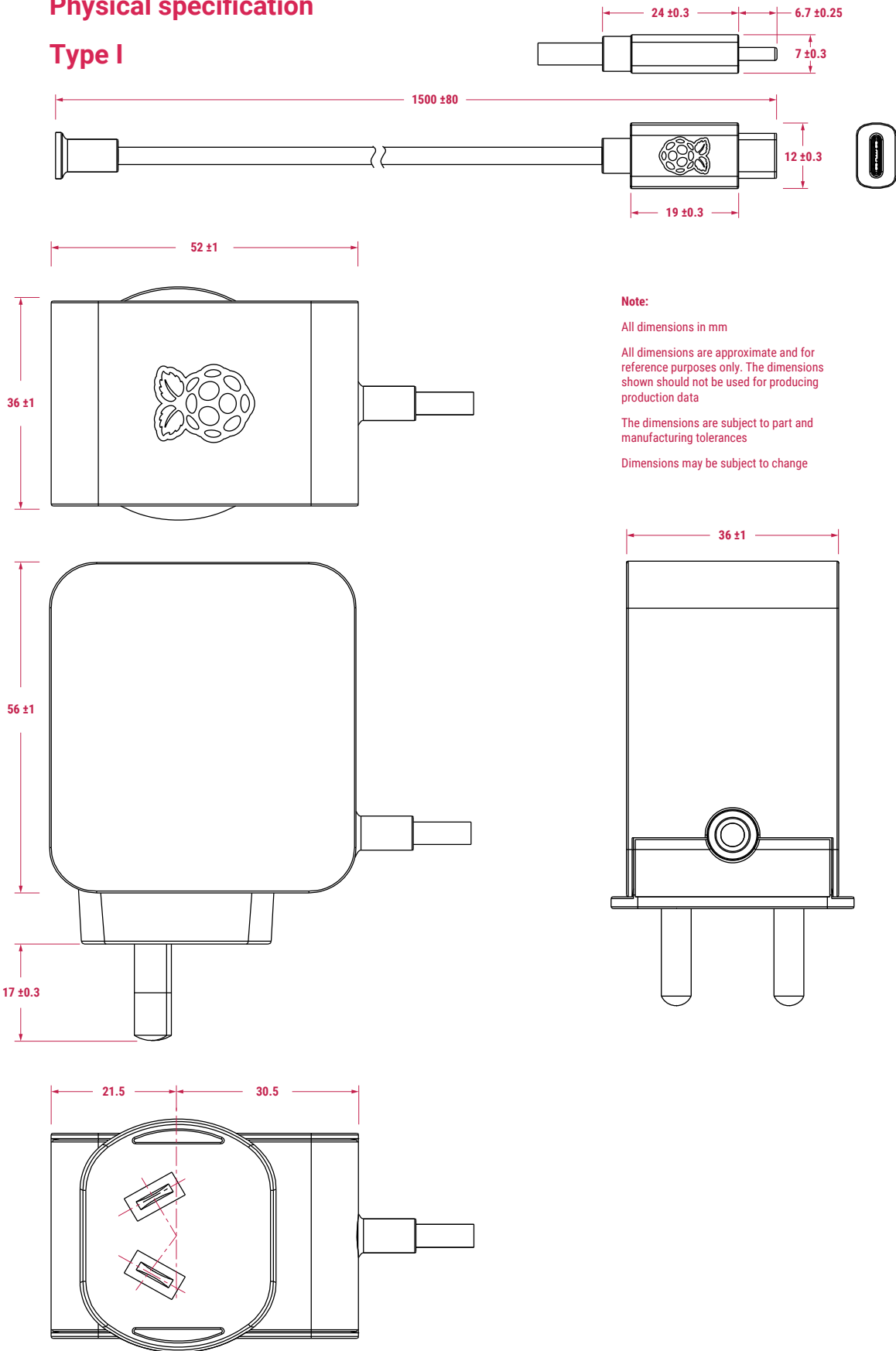
All dimensions are approximate and for reference purposes only. The dimensions shown should not be used for producing production data

The dimensions are subject to part and manufacturing tolerances

Dimensions may be subject to change

## Physical specification

### Type I



#### Note:

All dimensions in mm

All dimensions are approximate and for reference purposes only. The dimensions shown should not be used for producing production data

The dimensions are subject to part and manufacturing tolerances

Dimensions may be subject to change

## **WARNINGS**

- The connection of incompatible devices to this power supply may affect compliance, result in damage to the unit, and invalidate the warranty.
- Do not expose to water or moisture.
- Do not attempt to open or remove the power supply case.





Raspberry Pi is a trademark of Raspberry Pi Ltd

---