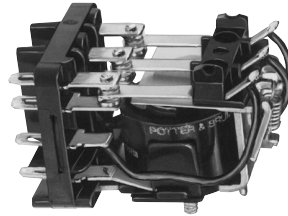


POTTER & BRUMFIELD KUMP SERIES PANEL PLUG-IN RELAY

GENERAL PURPOSE PANEL/PLUG-IN RELAYS

FEATURES

- 15 amp rating
- Contact arrangements 1-3 form A, 1-3 form B, 1-3 form C, 1 form X, 1 form Y, 1 form Z
- Open or enclosed
- Plain or bracket mount dust covers
- Optional indicator lamp and push-to-test button
- Several termination and mounting styles



APPLICATIONS

- Hospital beds
- Semiconductor wafer equipment
- Boom/bucket lifts

APPROVALS

- UL E22575
- CSA LR15734



Technical data of approved types on request

KUMP SERIES PANEL PLUG-IN RELAY

GENERAL PURPOSE PANEL/PLUG-IN RELAYS

CONTACT DATA

Contact arrangement	1, 2 and 3 form A (NO); 1, 2 and 3 form B (NC); 1, 2 and 3 form C (CO); 1 form X (NO-DM); 1 form Y (NC-DB); 1 form Z (CO-DB-DM)	
Rated voltage	277VAC	
Rated current	15A	
Contact material	AgCdO	AgSnOInO
Min recommended contact load	300mA, 12VDC	300mA, 12VDC
Frequency of operation	360 ops./hour	360 ops./hour
Operate/release time max	15/10ms	
Bounce time max.	17ms	

CONTACT RATINGS

Type	Load	Cycles
UL 508		
AgCdO	15A, 277VAC	-
	1/2HP, 120VAC	
	10A, 240VAC	
	10A, 32VDC	
	5FLA, 15LRA, 250VAC	
	5A, 120VAC, tungsten	
	0.5A, 250VAC	
	0.5A, 125VDC	
	10FLA, 40LRA, 125VAC	
	3A, 600VAC	
	1/2HP, 480VAC	
	1/2HP, 600VAC	
1HP, 480VAC, 3 phase		
AgSnOInO	15A, 277VAC, pf = 0.8	15x10 ³
	10A, 277VAC, pf = 0.8	100x10 ³
Mechanical endurance		10X10 ⁶ OPS.

COIL DATA

Coil voltage range	5 to 110VDC 6 to 240VAC
Coil insulation system according UL	Class B

COIL VERSIONS, DC COIL

Coil code	Rated voltage VDC	Operate voltage VDC	Coil resistance $\Omega \pm 10\%$	Rated coil power W
5	5	3.75	21	1.2
6	6	4.5	32.1	1.125
12	12	9.0	120	1.2
24	24	18.0	472	1.25
48	48	36.0	1800	1.3
110	110	82.5	10000	1.25

All figures are given for coil without preenergization, at ambient temperature +23°C.

COIL VERSIONS, AC COIL

Coil code	Rated voltage VAC	Operate voltage VAC	Coil resistance $\Omega \pm 15\%$	Rated coil power VA
6	6	5.1	4.2	2.8
12	12	10.2	18	2.8
24	24	20.4	72	2.8
120	120	102.0	1700	2.9
240	240	204.0	7200	2.9

All figures are given for coil without preenergization, at ambient temperature +23°C.

KUMP SERIES PANEL PLUG-IN RELAY

GENERAL PURPOSE PANEL/PLUG-IN RELAYS

INSULATION DATA

Initial dielectric strength	
between open contacts	1200V _{rms}
between contact and coil	2200V _{rms}
between adjacent contacts	2200V _{rms}
Initial insulation resistance	
between open contacts	100MΩ, 500VDC

OTHER DATA

Material compliance	EU RoHS/ELV, China RoHS, REACH, Halogen content refer to the Product Compliance Support Center at www.te.com/customer-support/rohssupportcenter
Ambient temperature range	
DC coil	Enclosed relays: -45°C to 70°C Open relays: 15°C higher maximum
AC coil	Enclosed relays, 3 pole: -45°C to +45°C Enclosed relays, 1 and 2 pole: -45°C to +55°C Open relays: 15°C higher maximum
Category of environmental protection	
IEC 61810	RTO - open relay; RTI - dust protected
Terminal type	Quick connects (QC), .187, .205 or .250: PCB-THT
Terminal retention, push force	
QC .205	17 lbs for 3s
QC .187, QC .250, PCB	25 lbs for 3s
Weight	85g
Packaging/unit	tray/25 pcs., box/150pcs.

ACCESSORIES

For details see datasheet	Sockets and Accessories, KUP Relays
---------------------------	---

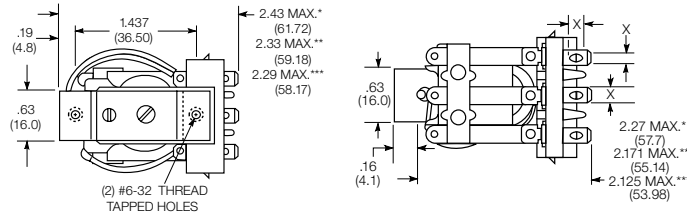
Product Code	Description
27E893	DIN socket (use 20C318 clip)
27E121	Track mount socket (use 20C314 clips)
27E043	Chassis mount/solder eyelet socket (use 20C254 clip)
27E046	Chassis mount/PCB socket (use 20C254 clip)
27E067	Chassis mount/quick connect socket (use 20C254 clip)
27E396	Snap-in/quick connect socket (use 20C254 clip)

KUMP SERIES PANEL PLUG-IN RELAY

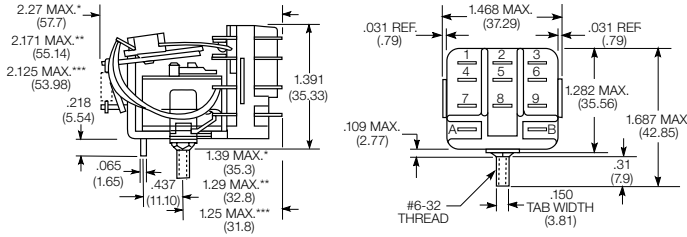
GENERAL PURPOSE PANEL/PLUG-IN RELAYS

DIMENSIONS (Unit: mm)

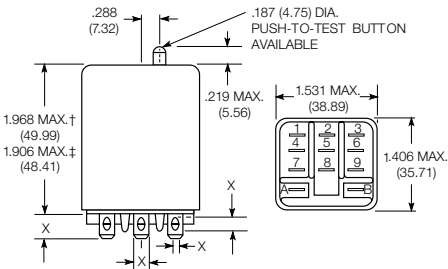
KUM bracket type



KUM stud type

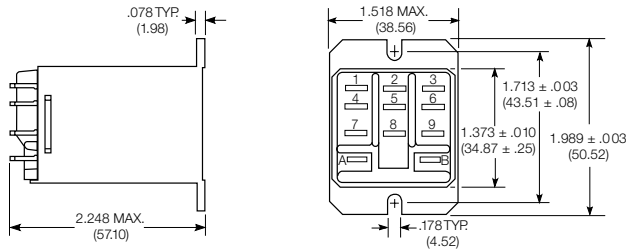


KUMP plain case

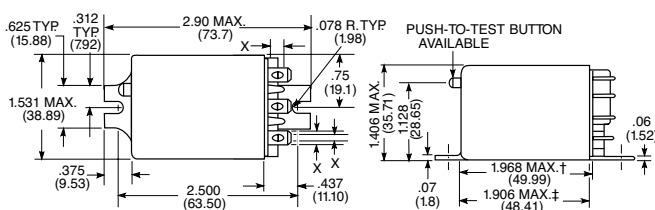


X Is For Terminal Dimensions. See Terminal Drawings.

KUMP top flange case



KUMP bracket mount case



Seated Heights For KUM (open) Relays

1.391" (35.33mm) for #6-32 stud with .218" (5.54mm) locating tab.

1.52" (38.6mm) for bracket with 2-#6 32 tapped holes.

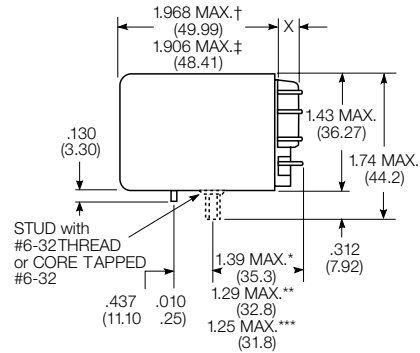
1.282" (32.56mm) for #6-32 tapped core with .125" (3.18mm) or .218" (5.54mm) locating tab.

2.046" (51.97mm) for relay with printed circuit terminals.

STUD TYPE also available with .125" (3.18mm) tab, as well as without stud and locating tab. Models without stud have core tapped #6-32 THREAD, .25" (6.4mm) minimum depth.

- * Dimensions with .250" (6.35mm) terminals.
- ** Dimensions with .110" (2.79mm) or .205" (5.21mm) terminals.
- *** Dimensions with .187" (4.75mm) terminals.

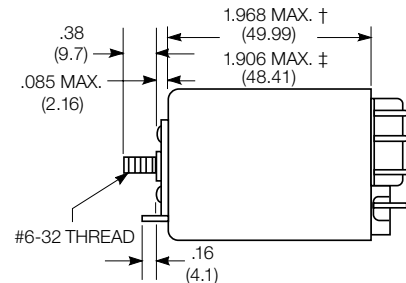
KUMP core / stud mount case



- † Dimensions with .250" (6.35mm) terminals.
- ‡ Dimensions with .187" (4.75mm and .205" 5.21mm) terminals.

- * Dimensions with .250" (6.35mm) terminals.
- ** Dimensions with .110" (2.79mm) or .205" (5.21mm) terminals.
- *** Dimensions with .187" (4.75mm) terminals.

KUMP stud on end case

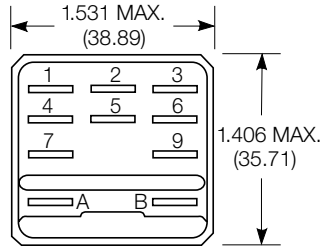


KUMP SERIES PANEL PLUG-IN RELAY

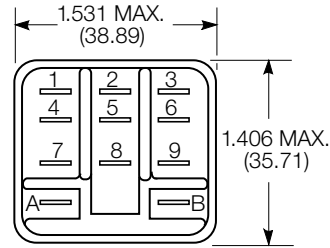
GENERAL PURPOSE PANEL/PLUG-IN RELAYS

RELAY FRONT DIAGRAMS

Models with 6.35mm (.250) QC terminals

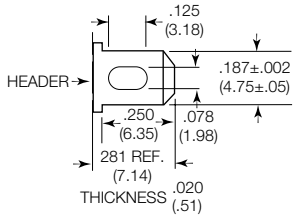


Models with all other terminals

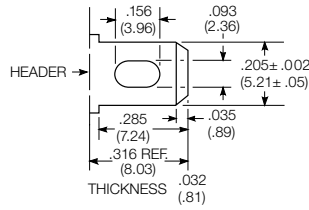


TERMINAL DIMENSIONS

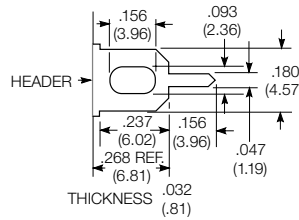
4.75mm (.187) quick connect



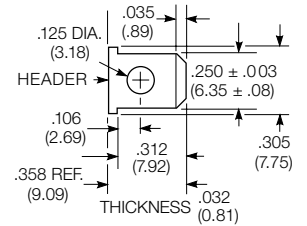
5.21mm (.205) quick connect



1.19mm (.047) printed circuit



1.19mm (.047) printed circuit

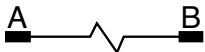
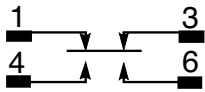


TERMINAL ASSIGNMENT

1 form Z

1 form X (delete 1 & 3)

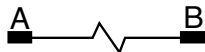
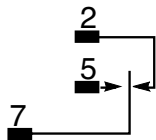
1 form Y (delete 4 & 6)



1 form C

1 form A (delete 2)

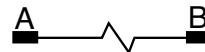
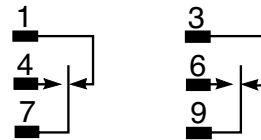
1 form B (delete 5)



2 form C

2 form A (delete 1 & 3)

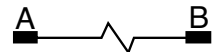
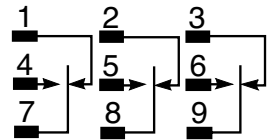
2 form B (delete 4 & 6)



3 form C

3 form A (delete 1, 2 & 3)

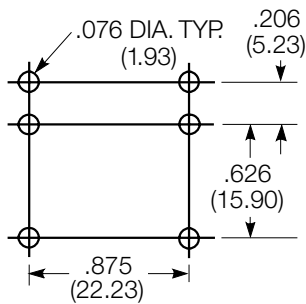
3 form B (delete 4, 5 & 6)



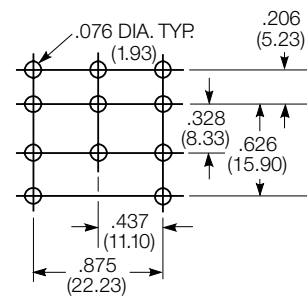
PCB LAYOUT

Bottom view on solder pins

1 form Z version (Omit unnecessary holes for form X and Y types)



3 pole version (Omit unnecessary holes for form A and 2 pole types)



KUMP SERIES PANEL PLUG-IN RELAY

GENERAL PURPOSE PANEL/PLUG-IN RELAYS

PRODUCT CODE STRUCTURE

Typical product code
KUMP -11 A 1 8 -120

Type

KUM	15A open style relay
KUMP	15A enclosed relay

Contact arrangement

1	1 form A (1 NO)
2	1 form B (1 NC)
3	1 form X (1 NO-DM)
4	1 form Y (1 NC-DB)
5	1 form C (1 CO)
6	1 form Z (1 CO-DB-DM)
7	2 form A (2 NO)
8	2 form B (2 NC)
11	2 form C (2 CO)
12	3 form A (3 NO)
13	3 form B (3 NC)
14	3 form C (3 CO)

Coil Input

A	AC, 50/60Hz
D	DC

Mounting and options

KUM	
1	#6-32 mounting stud, 5.54mm (.218in) locating tab
2	2-hole bracket, #6-32 tapped
3	#6-32 tapped core, 3.18mm (.125in) locating tab
4	#6-32 tapped core, 5.54mm (.218in) locating tab
5	#6-32 tapped core, no locating tab
KUMP	
1	Socket mount (plain) case
2	Socket mount (plain) case with push-to-test button
3	Socket mount (plain) case with indicator lamp ¹⁾
4	Socket mount (plain) case with indicator lamp and push-to-test button ¹⁾
5	Bracket mount case
T	Top flange case

Coil voltage

Coil code	Please refer to coil versions table
------------------	-------------------------------------

Terminal and contact material

6	5.21mm (.205in) quick connect/solder; AgCdO
8	4.75mm (.187in) quick connect/solder; AgCdO
9	1.19mm (.047in) PCB, AgCdO
G	6.35mm (.250in) quick connect/solder; AgCdO ²⁾
R	5.21mm (.205in) quick connect/solder; AgSnOInO
T	4.75mm (.187in) quick connect/solder; AgSnOInO
U	1.19mm (.047in) PCB, AgSnOInO
V	6.35mm (.250in) quick connect/solder; AgSnOInO ²⁾

²⁾ 6.35mm (.250in) quick connect/solder terminals are not available on 3 pole relays

Mounting and options

6	Bracket mount case with push-to-test button
7	Bracket mount case with indicator lamp ¹⁾
8	Bracket mount case with indicator lamp and push-to-test button ¹⁾
9	Plain case with #6-32 stud and locating tab on end of case
A	Plain case with #6-32 stud and locating tab
B	Plain case with #6-32 stud and locating tab, push-to-test button
C	Plain case with #6-32 stud and locating tab, indicator lamp ¹⁾
D	Plain case with #6-32 stud and locating tab, push-to-test button and indicator lamp ¹⁾
E	Plain case with #6-32 tapped core and locating tab
F	Plain case with #6-32 tapped core and locating tab, push-to-test button
G	Plain case with #6-32 tapped core and locating tab, indicator lamp ¹⁾
H	Plain case with #6-32 tapped core and locating tab, push-to-test button and indicator lamp ¹⁾

¹⁾ Indicator lamps are available on models with the following coils: 6-24VAC and VDC, 110VDC and 120-240VAC. Only models with 120-240VAC coils are UL recognized.

PRODUCT INFORMATION

Product code	Arrangement	Material	Coil	Terminals	Mounting	Part Number
KUMP-11A18-120	2 form C; 2 CO	AgCdO	120 VAC	4.75mm (.187in) QC	Socket mount, plain case	6-1393116-2
KUMP-11A18-240			240 VAC			6-1393116-4
KUMP-11D18-12			12 VDC			7-1393116-1
KUMP-11D18-24			24 VDC			7-1393116-2
KUMP-11D18-110			110 VDC			7-1393116-0
KUMP-14A18-120	3 form C, 3 CO		120 VAC			8-1393116-4
KUMP-14D18-12			12 VDC			9-1393116-0
KUMP-14D18-24			24 VDC			9-1393116-1

Notes:

1. Datasheets and product specification according to IEC 61810-1 and to be used only together with the 'Definitions' section.
2. Datasheets and product data is subject to the terms of the disclaimer and all chapters of the 'Definitions' section, available at <http://relays.te.com/definitions>.
3. Datasheets, product data, 'Definitions' section, application notes and all specifications are subject to change.

te.com

©2025 TE Connectivity. All Rights Reserved.

TE Connectivity, TE connectivity (logo) and Every Connection Counts are trademarks owned or licensed by the TE Connectivity plc. family of companies. All other logos, products and/or company names referred to herein might be trademarks of their respective owners.

While TE has made every reasonable effort to ensure the accuracy of the information in this document, TE does not guarantee that it is error-free, nor does TE make any other representation, warranty or guarantee that the information is accurate, correct, reliable or current. TE reserves the right to make any changes to the information contained herein without prior notice. TE Connectivity assumes only those obligations set forth in the terms and conditions for this product and shall in no event be liable for any incidental, indirect, or consequential damages arising out of the sale, resale, use, or misapplication of the product. TE expressly disclaims any implied warranties with respect to the information contained herein, including, but not limited to, implied warranties of merchantability or fitness for a particular purpose. Dimensions, specifications and/or information contained herein are for reference purposes only and are subject to change without notice. Consult TE for the latest dimensions, specifications and/or information. Users of TE Connectivity products must make their own assessment as to whether the respective product is suitable for the respective desired application.

09/25 AP