

POTTER & BRUMFIELD KUL SERIES LATCHING PANEL PLUG-IN RELAY

GENERAL PURPOSE PANEL/PLUG-IN RELAYS

FEATURES

- Magnetic latching relay
- Single or dual wound DC coils or single wound AC coils
- 1, 2, and 3 pole form C contact arrangement
- Reset occurs by reversing polarity in a single coil relay or by energizing the reset winding in dual coil relays
- Various mounting and socket styles



APPLICATIONS

- Alarm systems
- Machine tools
- Battery chargers
- Process and power controls
- Pressure washers
- Paving equipment

APPROVALS

- UL E22575
- CSA LR15734



Technical data of approved types on request

KUL SERIES LATCHING PANEL PLUG-IN RELAY

GENERAL PURPOSE PANEL/PLUG-IN RELAYS

CONTACT DATA

Contact arrangement	1 form C (CO), 2 form C (CO), 3 form C (CO)	
Rated voltage	240VAC	
Rated current	10A	
Contact material	Ag	AgCdO
Min. recommended contact load	100mA, 12VDC	300mA, 12VDC
Frequency of operation	360 ops./hour	
Operate/release time max.	25/25ms	

CONTACT RATINGS

Type	Load	Cycles
UL 508		
Ag	5A, 240VAC	100x10 ³
	1/6HP, 120VAC	
	1/3HP, 240VAC	
	0.5A, 120VDC	
AgCdO	2.5A, 120VAC, tungsten	100x10 ³
	10A, 250VAC	
	1/3HP, 120VAC	
	1/2HP, 250VAC	
	5A, 120VAC, tungsten	
	0.5A, 125VDC	
	10A, 28VDC	
	10FLA, 30LRA, 125VAC	
5FLA, 15LRA, 250VAC		
	125VA, pilot duty, 125/250VAC	
Mechanical endurance		10x10 ⁶ ops.

COIL DATA

Coil voltage range	12 to 110VDC (single and dual coil) 24 to 240VAC (single coil) 24 to 120VAC (dual coil)
Coil insulation system according UL	Class B

COIL VERSIONS, DC COIL ¹⁾

Coil code	Rated voltage VDC	Operate voltage VDC	Coil resistance Ω±10%	Rated coil power W
Single coil				
12	12	9.0	120	1.2
24	24	18.0	472	1.25
48	48	36.0	1800	1.3
110	110	82.5	10000	1.25
Dual coil ²⁾				
12	12	9.0	90	1.6
24	24	18.0	350	1.65
48	48	36.0	1400	1.65
110	110	82.5	7400	1.65

1) Latch and reset coil voltages and resistances are the same (unlike coils on request).

2) Dual coil available only with 1 or 2 form C contacts.

All figures are given for coil without preenergization, at ambient temperature +23°C.

COIL VERSIONS, AC COIL ³⁾

Coil code	Rated voltage VAC	Operate voltage VAC	Latch coil resistance Ω±15%	Reset coil resistance Ω±15%	Reset coil resistor Ω
Single coil					
24	24	20.4	176	-	680
120	120	102.0	3700	-	15000
240	240	204.0	179000	-	68000
Dual coil					
24	24	20.4	100	250	-
120	120	102.0	2525	2200	5600

3) AC coils use diodes. Diodes and resistors included inside relay with 1 and 2 form C contacts. For 3 form C relay, the customer must furnish and wire diodes and resistors externally (1N4007 is recommended diode).

All figures are given for coil without preenergization, at ambient temperature +23°C.

KUL SERIES LATCHING PANEL PLUG-IN RELAY

GENERAL PURPOSE PANEL/PLUG-IN RELAYS

INSULATION DATA

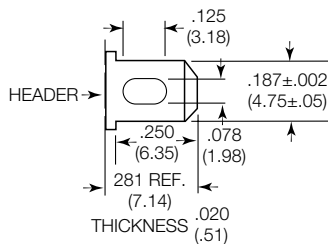
Initial dielectric strength	
between open contacts	500V _{rms}
between contact and coil	1500V _{rms}
between adjacent contacts	1500V _{rms}
Initial insulation resistance	
between open contacts	100MΩ

OTHER DATA

Material compliance	EU RoHS/ELV, China RoHS, REACH, Halogen content refer to the Product Compliance Support Center at www.te.com/customer-support/rohssupportcenter
Ambient temperature range	
DC coil	Single coil: -45°C to 70°C Dual coil: -45°C to 50°C
AC coil	Single coil: -45°C to 70°C
Category of environmental protection	
IEC 61810	RTI - dust protected
Terminal type	Quick connects (QC) .187
Weight	96g
Packaging/unit	tray/25 pcs., box/150pcs.

TERMINAL DIMENSIONS

4.75mm (.187) quick connect



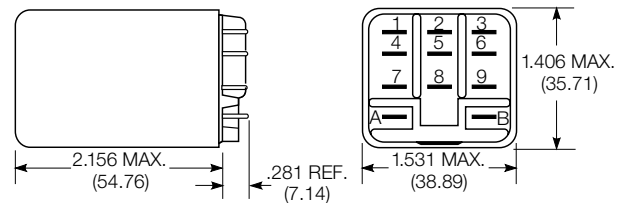
ACCESSORIES

For details see datasheet	Sockets and Accessories, KUP Relays
---------------------------	---

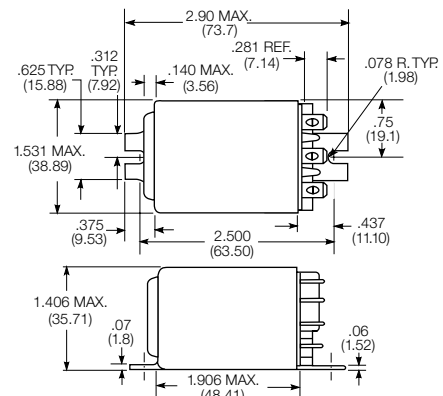
Product Code	Description
27E893	DIN socket (use 20C318 clip)
27E121	Track mount socket (use 20C314 clips)
27E043	Chassis mount/solder eyelet socket (use 20C254 clip)
27E046	Chassis mount/PCB socket (use 20C254 clip)
27E067	Chassis mount/quick connect socket (use 20C254 clip)
27E396	Snap-in/quick connect socket (use 20C254 clip)

DIMENSIONS (Unit: mm)

Plain case



Bracket mount case



KUL SERIES LATCHING PANEL PLUG-IN RELAY

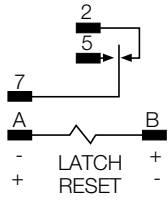
GENERAL PURPOSE PANEL/PLUG-IN RELAYS

TERMINAL ASSIGNMENT

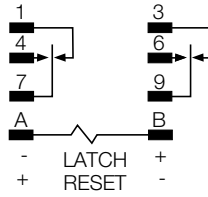
Bottom view on pins – Contact positions shown in diagrams is with the “RESET” input having been energized last.

Single Coil - DC

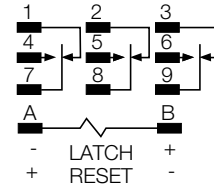
1 Form C



2 Form C

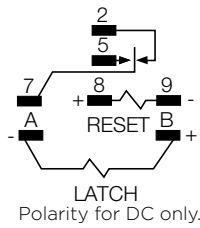


3 Form C

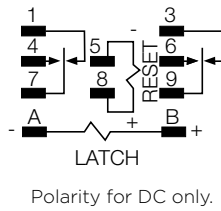


Dual Coil - AC or DC

1 Form C

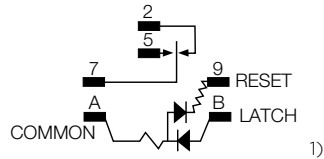


2 Form C

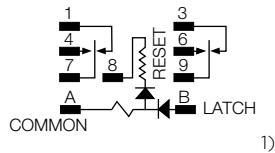


Single Coil - AC

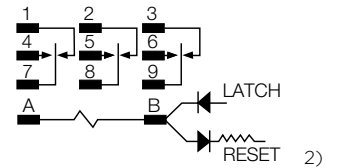
1 Form C



2 Form C



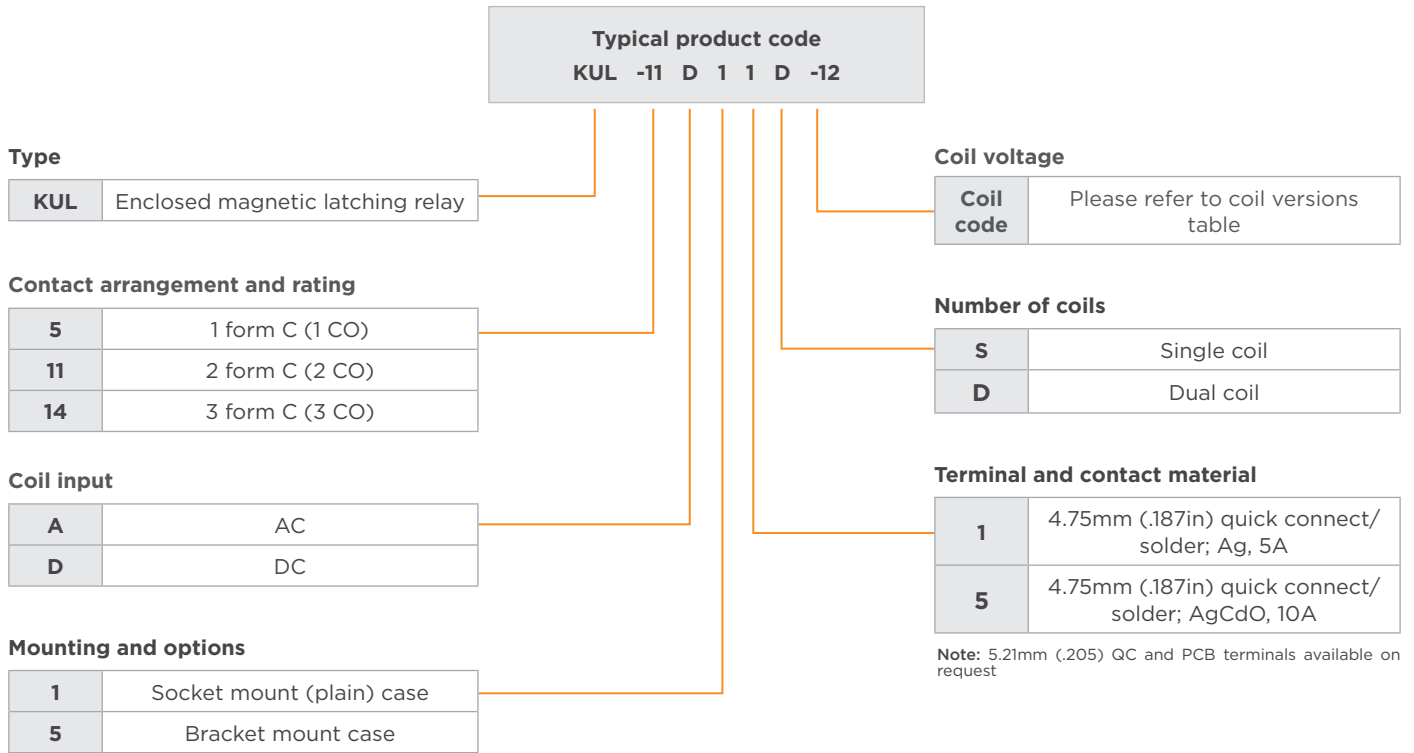
3 Form C



1) Do not connect any low impedance loads from terminal B to A.

2) Resistor and diodes connected by customer. See Coil Data Chart for resistor value. Recommended using 1N4007 diode.

PRODUCT CODE STRUCTURE



PRODUCT INFORMATION

Product code	Arrangement	Material	Coil	Case Style	Terminals	Part Number
KUL-11A15S-24	2 form C, 2 CO	AgCdO	24 VAC	Plain case	Plug-in	2-1393115-7
KUL-11A15S-120			120 VAC			2-1393115-6
KUL-11D15D-24			24 VDC			3-1393115-2
KUL-11D15D-48			48 VDC			3-1393115-3

Notes:

- Datasheets and product specification according to IEC 61810-1 and to be used only together with the 'Definitions' section.
- Datasheets and product data is subject to the terms of the disclaimer and all chapters of the 'Definitions' section, available at <http://relays.te.com/definitions>.
- Datasheets, product data, 'Definitions' section, application notes and all specifications are subject to change.

te.com

©2025 TE Connectivity. All Rights Reserved.

TE Connectivity, TE connectivity (logo) and Every Connection Counts are trademarks owned or licensed by the TE Connectivity plc. family of companies. All other logos, products and/or company names referred to herein might be trademarks of their respective owners.

While TE has made every reasonable effort to ensure the accuracy of the information in this document, TE does not guarantee that it is error-free, nor does TE make any other representation, warranty or guarantee that the information is accurate, correct, reliable or current. TE reserves the right to make any changes to the information contained herein without prior notice. TE Connectivity assumes only those obligations set forth in the terms and conditions for this product and shall in no event be liable for any incidental, indirect, or consequential damages arising out of the sale, resale, use, or misapplication of the product. TE expressly disclaims any implied warranties with respect to the information contained herein, including, but not limited to, implied warranties of merchantability or fitness for a particular purpose. Dimensions, specifications and/or information contained herein are for reference purposes only and are subject to change without notice. Consult TE for the latest dimensions, specifications and/or information. Users of TE Connectivity products must make their own assessment as to whether the respective product is suitable for the respective desired application.

09/25 AP