

# POTTER & BRUMFIELD KUEP SERIES PANEL PLUG-IN RELAY

---

GENERAL PURPOSE  
INDUSTRIAL RELAYS

## FEATURES

- 1 Form X, 2 Form A and 2 Form C contact arrangements
- 10 amp current rating
- Magnetic blow-out
- Various mounting options
- Indicator lamp available



## APPLICATIONS

- DC load switching in industrial controls

## APPROVALS

- UL E22575
- CSA LR15734
- CE (KUEP-11 only)



Technical data of approved types on request

# POTTER & BRUMFIELD KUEP SERIES PANEL PLUG-IN RELAY

## GENERAL PURPOSE INDUSTRIAL RELAYS

### CONTACT DATA

Contact arrangement	1 form X (NO-DM), 2 form A (NO), 2 form C (CO)
Rated voltage	150VDC
Rated current	10A
Contact material	AgCdO      AgSnOInO
Min. recommended contact load	300mA, 12VDC
Frequency of operation, with/without load	360 ops./hour
Operate/releases time max.	15/10ms
Bounce time max.	17ms

### CONTACT RATINGS

Type	Load	Cycles
<b>UL 508</b>		
KUEP, 1 form X, AgCdO	10A, 150VDC	100x10 <sup>3</sup>
	1A, 300VDC 2.5 A, 170 VDC, resistive	100x10 <sup>3</sup> 100x10 <sup>3</sup>
KUEP, 2 form A, AgCdO	5 A, 150 VDC	100x10 <sup>3</sup>
	2.5 A, 170 VDC, resistive	
KUEP, 2 form C, AgCdO	3 A, 150 VDC	100x10 <sup>3</sup>
	2.5 A, 170 VDC, resistive	
	10 A, 240 VAC	
	10 A, 32 VDC	
	5 FLA, 15 LRA, 250 VAC	
	1/3 HP, 120 VAC	
	5 A, 120 VAC, tungsten	
	1/2 HP, 250 VAC	
	10 FLA, 40 LRA, 125 VAC	
	3 A, 600 VAC	
1/2 HP, 480 VAC		
1/2 HP, 600 VAC		
1 HP, 480 VAC, 3 phase		
KUEP, 1 form X, AgSnOInO	10A, 150VDC, resistive	30X10 <sup>3</sup>
KUEP, 2 form A, AgSnOInO	5 A, 150 VDC, resistive	100X10 <sup>3</sup>
KUEP, 2 form C, AgSnOInO	3 A, 150 VDC, resistive	100X10 <sup>3</sup>
Mechanical endurance	10x10 <sup>6</sup> ops.	

**Note:** Indicated contact ratings and electrical endurance data apply only for direct wiring of the relay (according to UL 508/61810-1); for relays mounted on sockets, deratings may apply.

### COIL DATA

Coil voltage range	5 to 125VDC 6 to 240VAC
Coil insulation system according UL	Class B

### COIL VERSIONS, DC COIL

Coil code	Rated voltage VDC	Operate voltage VDC	Coil resistance Ω±10%	Rated coil power W
<b>One pole versions</b>				
5	5	3.75	21	1.2
6	6	4.5	32	1.125
12	12	9.0	120	1.2
24	24	18.0	472	1.25
48	48	36.0	1800	1.3
110	110	82.5	10000	1.25
125	125	93.75	13000	1.2
<b>Two pole versions</b>				
5	5	3.75	14	1.8
6	6	4.5	20	1.8
12	12	9.0	80	1.8
24	24	18.0	320	1.8
48	48	36.0	1250	1.85
110	110	82.5	6720	1.8
125	125	93.75	8680	1.8

All figures are given for coil without preenergization, at ambient temperature +23°C.

### COIL VERSIONS, AC COIL

Coil code	Rated voltage VAC	Operate voltage VAC	Coil resistance Ω±15%	Rated coil power VA
<b>One pole versions</b>				
6	6	5.1	6	2.0
12	12	10.2	24	2.0
24	24	20.4	85	2.0
120	120	102.0	2250	2.1
240	240	204.0	9110	2.1
<b>Two pole versions</b>				
6	6	5.1	4.2	2.8
12	12	10.2	18	2.8
24	24	20.4	72	2.8
120	120	102.0	1700	2.9
240	240	204.0	7200	2.9

All figures are given for coil without preenergization, at ambient temperature +23°C.

# POTTER & BRUMFIELD KUEP SERIES PANEL PLUG-IN RELAY

## GENERAL PURPOSE INDUSTRIAL RELAYS

### INSULATION DATA

Initial dielectric strength	
Between open contacts	1200 V <sub>rms</sub>
Between contact and coil	2200 V <sub>rms</sub>
Between adjacent contacts	2200 V <sub>rms</sub>
Initial insulation resistance	
Between insulated elements	100 MΩ

### ACCESSORIES

For details see datasheet	<a href="#">Sockets and Accessories, KUEP Relays</a>
---------------------------	--

Product Code	Description
<a href="#">27E893</a>	DIN socket (use 20C318 clip)
<a href="#">27E121</a>	Track mount socket (use 20C314 clips)
<a href="#">27E043</a>	Chassis mount/solder eyelet socket (use 20C254 clip)
<a href="#">27E046</a>	Chassis mount/PCB socket (use 20C254 clip)
<a href="#">27E067</a>	Chassis mount/quick connect socket (use 20C254 clip)
<a href="#">27E396</a>	Snap-in/quick connect socket (use 20C254 clip)

### OTHER DATA

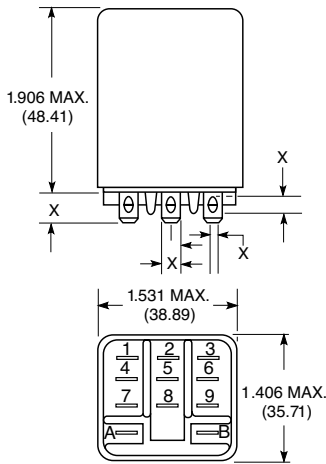
Material compliance	EU RoHS/ELV, China RoHS, REACH, Halogen content refer to the Product Compliance Support Center at <a href="http://www.te.com/customersupport/rohssupportcenter">www.te.com/customersupport/rohssupportcenter</a>
Ambient temperature	
DC coil	-45°C to 70°C
AC coil	1 pole: -45°C to 55°C 2 pole: -45°C to 45°C
Category of environmental protection	
IEC 61810	RTI - dust protected
Vibration resistance (functional)	.065" double amplitude, 10-55Hz
Shock resistance (functional)	15g, 11ms (non-operating)
Terminal type	Quick connects (QC), .187 or .205 PCB-THT
Terminal retention, push force	
QC .205	17 lbs for 3s
QC .187	25 lbs for 3s

# POTTER & BRUMFIELD KUEP SERIES PANEL PLUG-IN RELAY

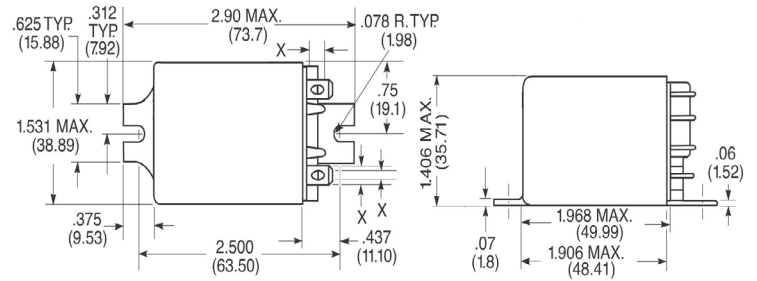
## GENERAL PURPOSE INDUSTRIAL RELAYS

### DIMENSIONS (Unit mm)

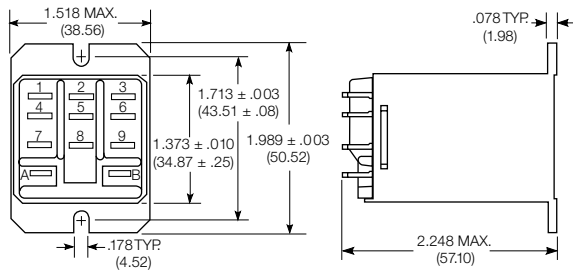
#### PLAIN CASE



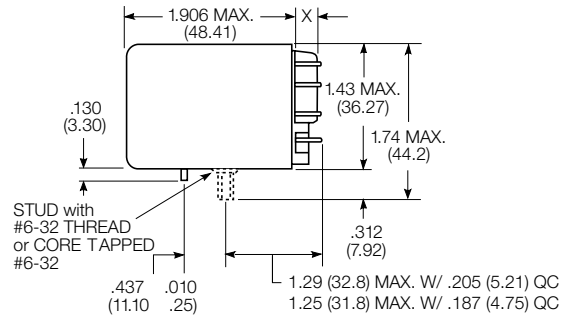
#### BRACKET MOUNT CASE



#### TOP FLANGE CASE



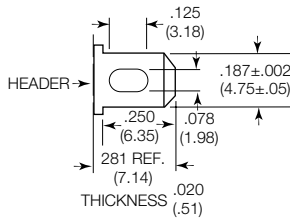
#### CORE / STUD MOUNT CASE



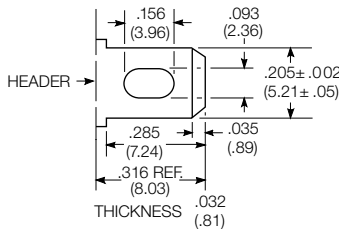
X Is For Terminal Dimensions. See Terminal Drawings.

### TERMINAL DIMENSIONS

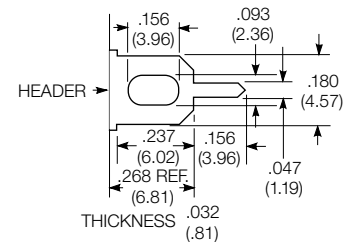
#### 4.75MM (.187) QUICK CONNECT



#### 5.21MM (.205) QUICK CONNECT



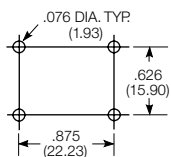
#### 1.19MM (.047) PRINTED CIRCUIT



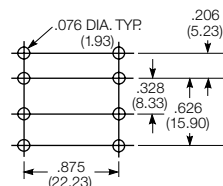
### PCB LAYOUT

Bottom view on solder pins

1 form X version

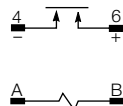


2 form C version shown (Omit unnecessary holes for form A types)

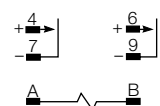


### TERMINAL ASSIGNMENT

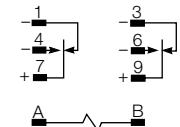
1 Form X



2 Form A



2 Form C

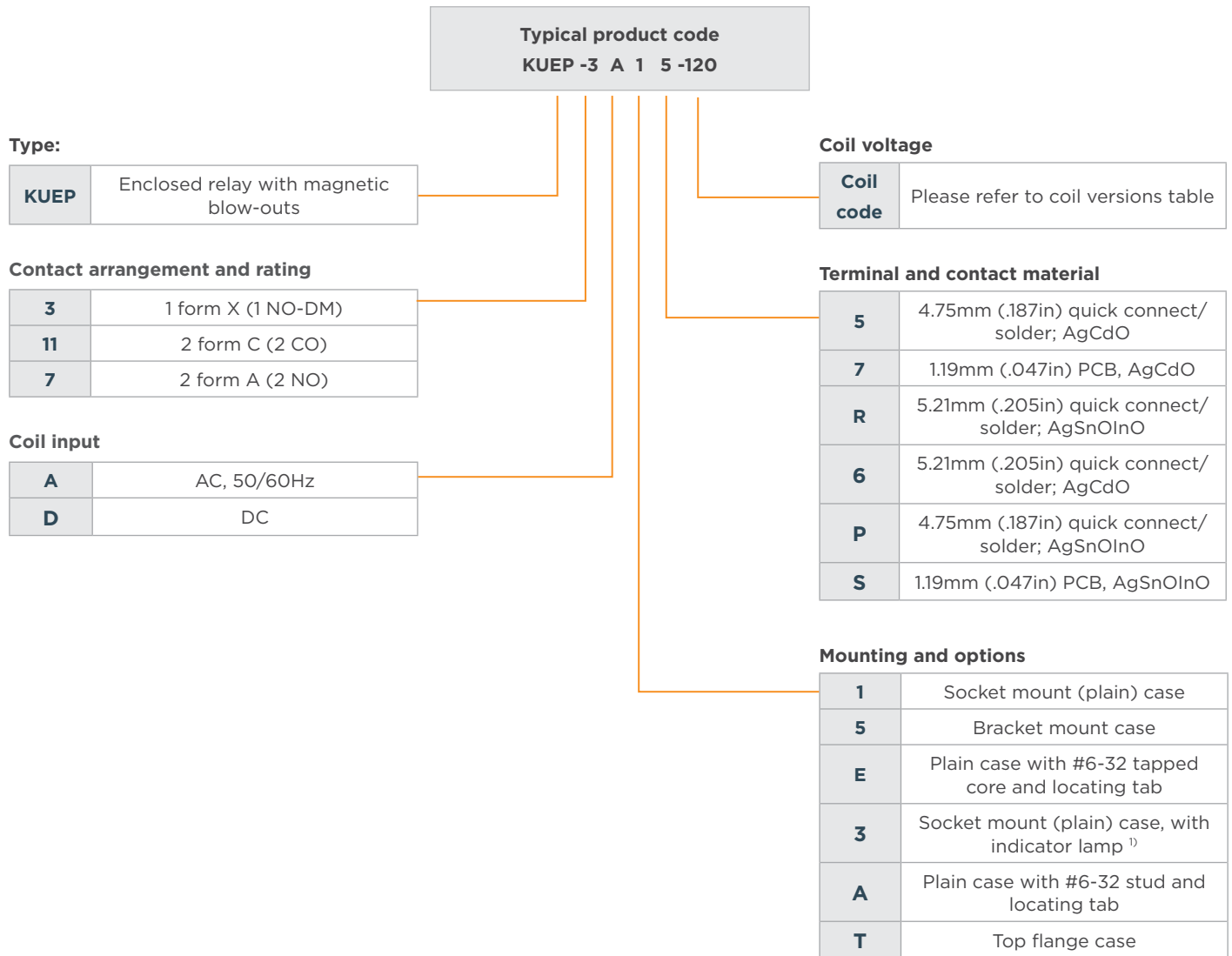


Load polarity noted above is recommended for optimum arc suppression.

# POTTER & BRUMFIELD KUEP SERIES PANEL PLUG-IN RELAY

## GENERAL PURPOSE INDUSTRIAL RELAYS

### PRODUCT CODE STRUCTURE



<sup>1)</sup> Indicator lamps are available on models with the following coils: 6-24VAC and VDC, 110VDC and 120-240VAC. Only models with 120-240VAC coils are UL recognized.

## PRODUCT INFORMATION

Product Code	Arrangement	Material	Coil	Terminals	Mounting	Part Number		
KUEP-3A15-120	1 Form X, 1 NO-DM	AgCdO	120 VAC	4.75mm (.187in) QC	Socket mount, plain case	<a href="#">9-1393113-4</a>		
KUEP-3D15-12			12 VDC			<a href="#">9-1393113-8</a>		
KUEP-3D15-24			24 VDC			<a href="#">1393114-1</a>		
KUEP-3D15-48			48 VDC			<a href="#">1393114-2</a>		
KUEP-3D15-110			110 VDC			<a href="#">9-1393113-7</a>		
KUEP-3D35-24			24 VDC		Socket mount, plain case w/ indicator lamp	<a href="#">1393114-5</a>		
KUEP-7D15-24	2 Form A, 2 NO							<a href="#">1-1393114-1</a>
KUEP-11A15-120	2 Form C, 2 CO				120 VAC	Socket mount, plain case	<a href="#">8-1393113-3</a>	
KUEP-11D15-12			12 VDC		<a href="#">8-1393113-6</a>			
KUEP-11D15-24			24 VDC		<a href="#">8-1393113-7</a>			
KUEP-11D15-48			48 VDC		<a href="#">8-1393113-8</a>			
KUEP-11D15-110			110 VDC		<a href="#">8-1393113-5</a>			

### Notes:

- Datasheets and product specification according to IEC 61810-1 and to be used only together with the 'Definitions' section.
- Datasheets and product data is subject to the terms of the disclaimer and all chapters of the 'Definitions' section, available at <http://relays.te.com/definitions>.
- Datasheets, product data, 'Definitions' section, application notes and all specifications are subject to change.

### te.com

©2026 TE Connectivity plc. family of companies. All Rights Reserved.

TE Connectivity, TE connectivity (logo) and Every Connection Counts are trademarks owned or licensed by the TE Connectivity plc. family of companies. All other logos, products and/or company names referred to herein might be trademarks of their respective owners.

While TE has made every reasonable effort to ensure the accuracy of the information in this document, TE does not guarantee that it is error-free, nor does TE make any other representation, warranty or guarantee that the information is accurate, correct, reliable or current. TE reserves the right to make any changes to the information contained herein without prior notice. TE Connectivity assumes only those obligations set forth in the terms and conditions for this product and shall in no event be liable for any incidental, indirect, or consequential damages arising out of the sale, resale, use, or misapplication of the product. TE expressly disclaims any implied warranties with respect to the information contained herein, including, but not limited to, implied warranties of merchantability or fitness for a particular purpose. Dimensions, specifications and/or information contained herein are for reference purposes only and are subject to change without notice. Consult TE for the latest dimensions, specifications and/or information. Users of TE Connectivity products must make their own assessment as to whether the respective product is suitable for the respective desired application.

04/26 ED