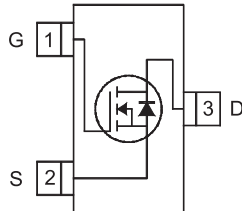


**RoHS
Compliant**



Features

- V_{DS} (V) =100V
- I_D =1.6 A (V_{GS} =10V)
- $R_{DS(ON)}$ < 22m Ω (V_{GS} =10V)
- $R_{DS(ON)}$ < 235m Ω (V_{GS} =4.5V)

Absolute Maximum Ratings (Ta=25°C)

Parameter	Symbol	Rating	Unit
Drain-Source Voltage	V_{DS}	100	V
Gate-Source Voltage	V_{GS}	± 16	
Continuous Drain Current @ $V_{GS}=10V$	I_D	TA=25°C	A
		TA=70°C	
Pulsed Drain Current	I_{DM}	7	
Power Dissipation	P_D	TA=25°C	W
		TA=70°C	
Thermal Resistance.Junction- to-Ambient (Note.1)	R_{thJA}	100	°C/W
		99	
Linear Derating Factor		0.01	W/°C
Junction Temperature	T_J	150	°C
Storage Temperature Range	T_{stg}	-55 to 150	

Note.1: Surface mounted on 1 in square Cu board

Electrical Characteristics Ta = 25°C

Characteristic	Symbol	Conditions	Min	Typ	Max	Unit
Drain-Source Breakdown Voltage	V_{DSS}	$I_D=250\mu A, V_{GS}=0V$	100			V
Zero Gate Voltage Drain Current	I_{DSS}	$V_{DS}=100V, V_{GS}=0V$			20	uA
		$V_{DS}=100V, V_{GS}=0V, T_J=125^\circ C$			250	
Gate-Body leakage current	I_{GSS}	$V_{DS}=0V, V_{GS}=\pm 16V$			± 100	nA
Gate Threshold Voltage	$V_{GS(th)}$	$V_{DS}=V_{GS}, I_D=250\mu A$	1		2.5	V
Static Drain-Source On-Resistance (Note.1)	$R_{DS(on)}$	$V_{GS}=4.5V, I_D=1.3A$		190	235	m Ω
		$V_{GS}=10V, I_D=1.6A$		178	220	
Forward Transconductance	g_{FS}	$V_{DS}=50V, I_D=1.6A$	5.7			S

Characteristic	Symbol	Conditions	Min	Typ	Max	Unit
Input Capacitance	C_{iss}	$V_{GS}=0V, V_{DS}=25V, f=1MHz$		290		pF
Output Capacitance	C_{oss}			27		
Reverse Transfer Capacitance	C_{rss}			13		
Gate Resistance	R_g			1.3		Ω
Total Gate Charge	Q_g	$V_{GS}=4.5V, V_{DS}=50V, I_D=1.6A$		2.5		nC
Gate Source Charge	Q_{gs}			0.5		
Gate Drain Charge	Q_{gd}			1.2		
Turn-On Delay Time	$t_{d(on)}$	$V_{GS}=4.5V, V_{DS}=50V, I_D=1A, R_{GEN}=6.8\Omega$		2.2		nS
Turn-On Rise Time	t_r			2.1		
Turn-Off Delay Time	$t_{d(off)}$			9		
Turn-Off Fall Time	t_f			3.6		
Body Diode Reverse Recovery Time	t_{rr}	$V_R=50V, I_F=1.1A, di/dt=100A/\mu s, T_J=25^\circ C$ (Note.1)		20	30	nc
Body Diode Reverse Recovery Charge	Q_{rr}			13	20	
Maximum Body-Diode Continuous Current	I_S				1.1	A
Pulsed Source Current	I_{SM}	(Note.2)			7	A
Diode Forward Voltage	V_{SD}	$I_S=1.1A, V_{GS}=0V, T_J=25^\circ$ (Note.1)			1.3	V

Note.1 : Pulse width $\leq 400\mu s$; duty cycle $\leq 2\%$.

Note.2 : Repetitive rating; pulse width limited by max. junction temperature.

Typical Characteristics

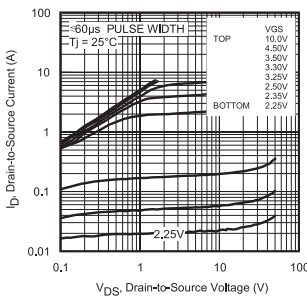


Fig 1. Typical Output Characteristics

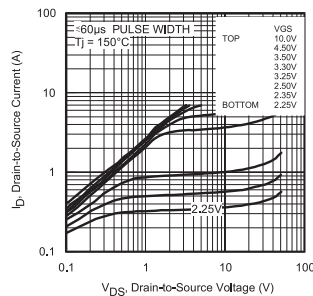


Fig 2. Typical Output Characteristics

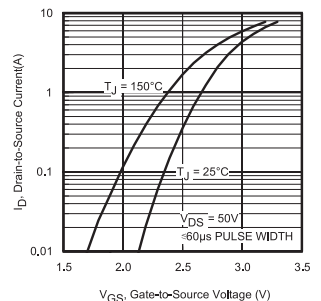


Fig 3. Typical Transfer Characteristics

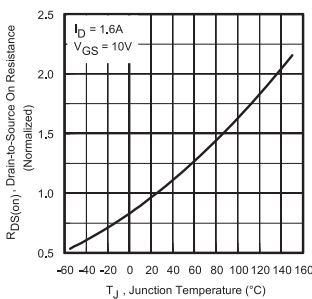


Fig 4. Normalized On-Resistance Vs. Temperature

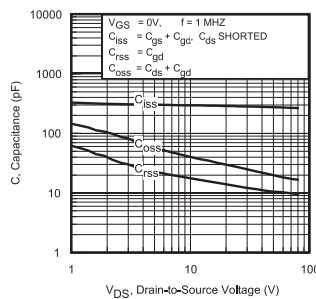


Fig 5. Typical Capacitance Vs. Drain-to-Source Voltage

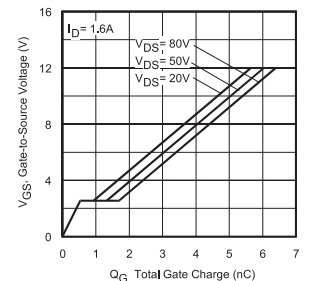


Fig 6. Typical Gate Charge Vs. Gate-to-Source Voltage

Typical Characteristics

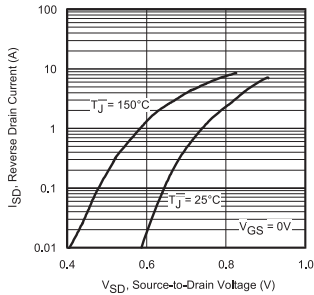


Fig 7. Typical Source-Drain Diode Forward Voltage

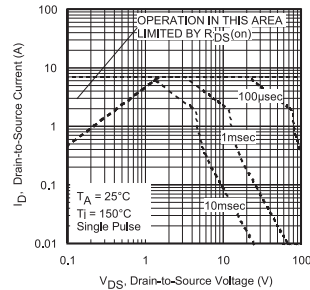


Fig 8. Maximum Safe Operating Area

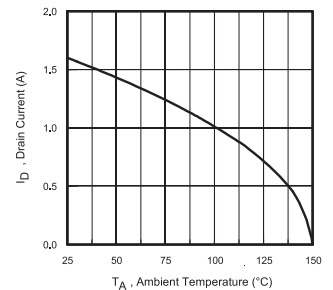


Fig 9. Maximum Drain Current Vs. Ambient Temperature

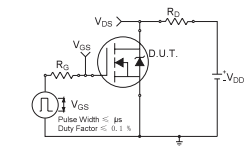


Fig 10a. Switching Time Test Circuit

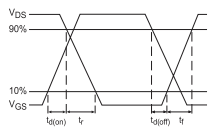


Fig 10b. Switching Time Waveforms

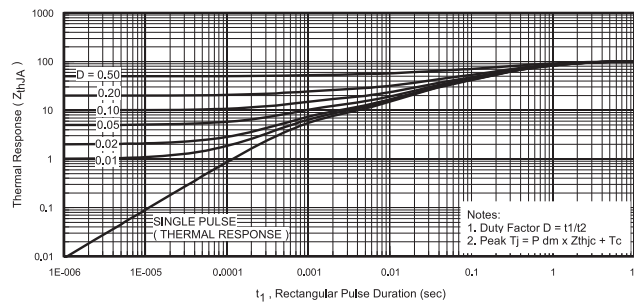


Fig 11. Typical Effective Transient Thermal Impedance, Junction-to-Ambient

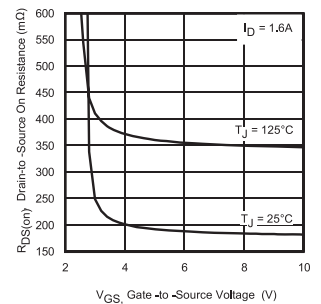


Fig 12. Typical On-Resistance Vs. Gate Voltage

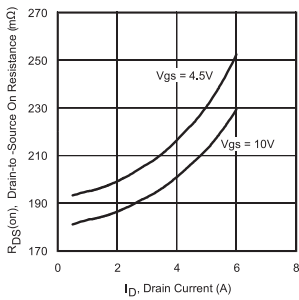


Fig 13. Typical On-Resistance Vs. Drain Current

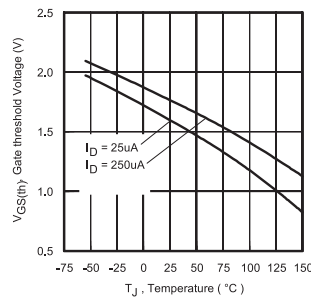


Fig 14. Typical Threshold Voltage Vs. Junction Temperature

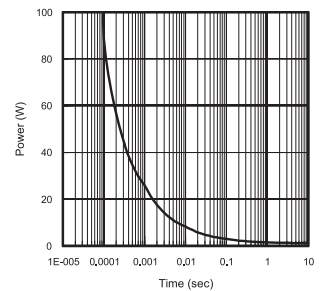


Fig 15. Typical Power Vs. Time

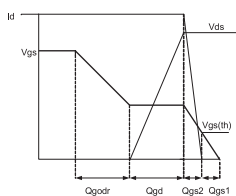


Fig 16a. Basic Gate Charge Waveform

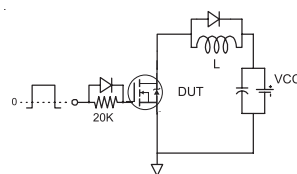
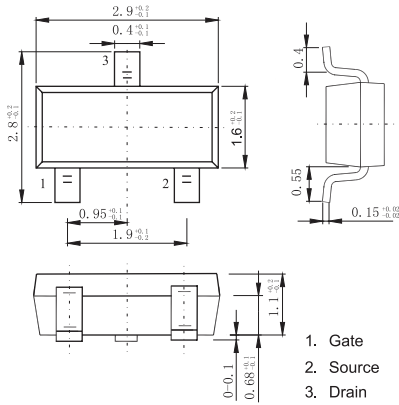


Fig 16b. Gate Charge Test Circuit

Diagram



Part Number Table

Description	Part Number
MOSFET, N Channel, 1.6A, 100V, SOT23-3	IRLML0100

Dimensions : Millimetres

Important Notice : This data sheet and its contents (the "Information") belong to the members of the AVNET group of companies (the "Group") or are licensed to it. No licence is granted for the use of it other than for information purposes in connection with the products to which it relates. No licence of any intellectual property rights is granted. The Information is subject to change without notice and replaces all data sheets previously supplied. The Information supplied is believed to be accurate but the Group assumes no responsibility for its accuracy or completeness, any error in or omission from it or for any use made of it. Users of this data sheet should check for themselves the Information and the suitability of the products for their purpose and not make any assumptions based on information included or omitted. Liability for loss or damage resulting from any reliance on the Information or use of it (including liability resulting from negligence or where the Group was aware of the possibility of such loss or damage arising) is excluded. This will not operate to limit or restrict the Group's liability for death or personal injury resulting from its negligence. Multicomp Pro is the registered trademark of Premier Farnell Limited 2019.

Newark.com/multicomp-pro
 Farnell.com/multicomp-pro
 sg.element14.com/b/multicomp-pro