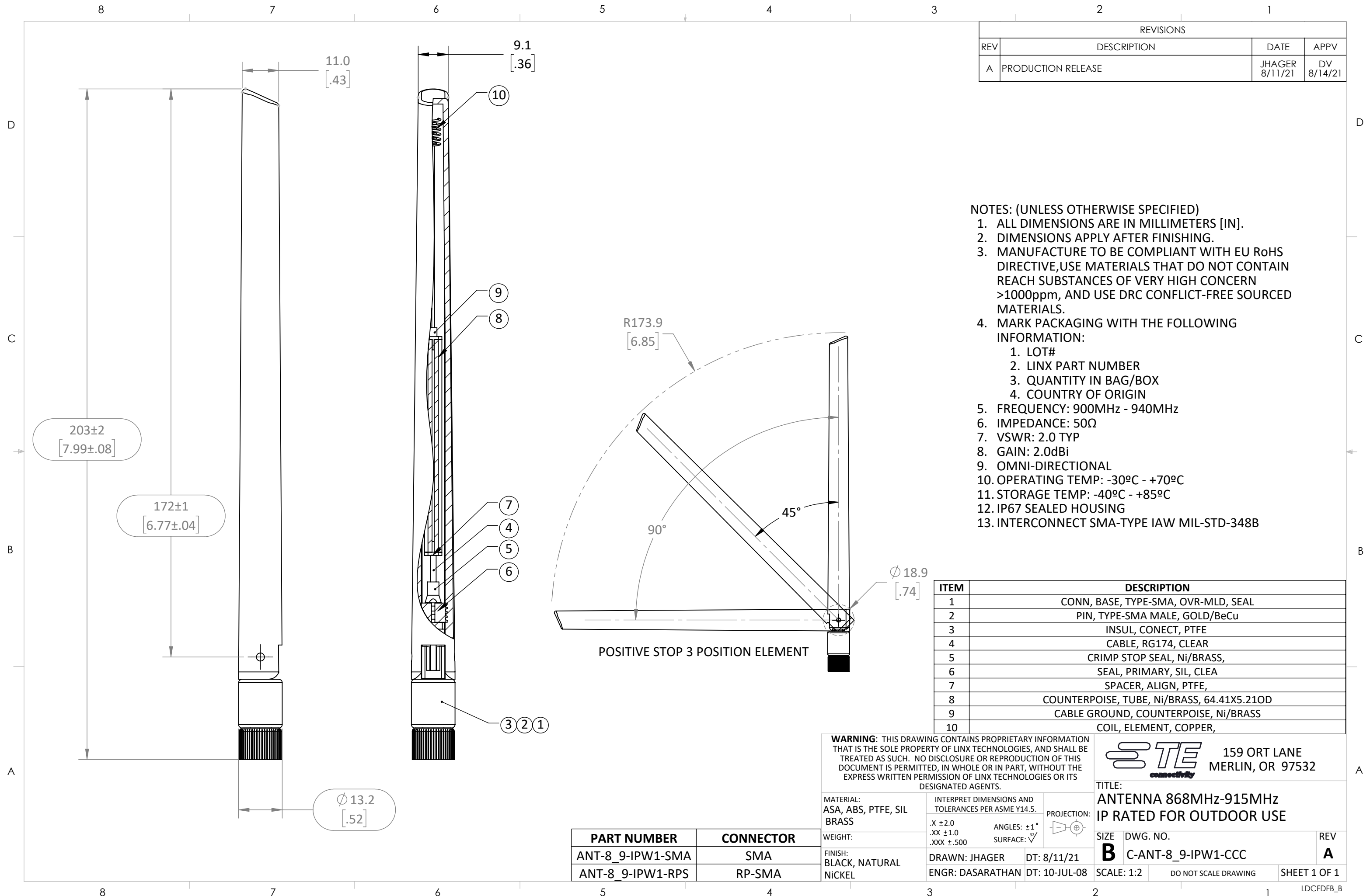


REVISIONS			
REV	DESCRIPTION	DATE	APPV
A	PRODUCTION RELEASE	JHAGER 8/11/21	DV 8/14/21



- NOTES: (UNLESS OTHERWISE SPECIFIED)
- ALL DIMENSIONS ARE IN MILLIMETERS [IN].
 - DIMENSIONS APPLY AFTER FINISHING.
 - MANUFACTURE TO BE COMPLIANT WITH EU RoHS DIRECTIVE, USE MATERIALS THAT DO NOT CONTAIN REACH SUBSTANCES OF VERY HIGH CONCERN >1000ppm, AND USE DRC CONFLICT-FREE SOURCED MATERIALS.
 - MARK PACKAGING WITH THE FOLLOWING INFORMATION:
 - LOT#
 - LINX PART NUMBER
 - QUANTITY IN BAG/BOX
 - COUNTRY OF ORIGIN
 - FREQUENCY: 900MHz - 940MHz
 - IMPEDANCE: 50Ω
 - VSWR: 2.0 TYP
 - GAIN: 2.0dBi
 - OMNI-DIRECTIONAL
 - OPERATING TEMP: -30°C - +70°C
 - STORAGE TEMP: -40°C - +85°C
 - IP67 SEALED HOUSING
 - INTERCONNECT SMA-TYPE IAW MIL-STD-348B

ITEM	DESCRIPTION
1	CONN, BASE, TYPE-SMA, OVR-MLD, SEAL
2	PIN, TYPE-SMA MALE, GOLD/BeCu
3	INSUL, CONECT, PTFE
4	CABLE, RG174, CLEAR
5	CRIMP STOP SEAL, Ni/BRASS,
6	SEAL, PRIMARY, SIL, CLEA
7	SPACER, ALIGN, PTFE,
8	COUNTERPOISE, TUBE, Ni/BRASS, 64.41X5.21OD
9	CABLE GROUND, COUNTERPOISE, Ni/BRASS
10	COIL, ELEMENT, COPPER,

WARNING: THIS DRAWING CONTAINS PROPRIETARY INFORMATION THAT IS THE SOLE PROPERTY OF LINX TECHNOLOGIES, AND SHALL BE TREATED AS SUCH. NO DISCLOSURE OR REPRODUCTION OF THIS DOCUMENT IS PERMITTED, IN WHOLE OR IN PART, WITHOUT THE EXPRESS WRITTEN PERMISSION OF LINX TECHNOLOGIES OR ITS DESIGNATED AGENTS.

STE 159 ORT LANE
MERLIN, OR 97532
connectivity

TITLE:
**ANTENNA 868MHz-915MHz
IP RATED FOR OUTDOOR USE**

PART NUMBER	CONNECTOR
ANT-8_9-IPW1-SMA	SMA
ANT-8_9-IPW1-RPS	RP-SMA

MATERIAL: ASA, ABS, PTFE, SIL BRASS	INTERPRET DIMENSIONS AND TOLERANCES PER ASME Y14.5.	PROJECTION:
WEIGHT:	.X ±2.0 .XX ±1.0 .XXX ±.500	
FINISH: BLACK, NATURAL NICKEL	ANGLES: ±1° SURFACE:	DRAWN: JHAGER ENGR: DASARATHAN
		DT: 8/11/21 DT: 10-JUL-08

SIZE B	DWG. NO. C-ANT-8_9-IPW1-CCC	REV A
SCALE: 1:2	DO NOT SCALE DRAWING	SHEET 1 OF 1