



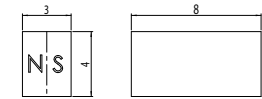
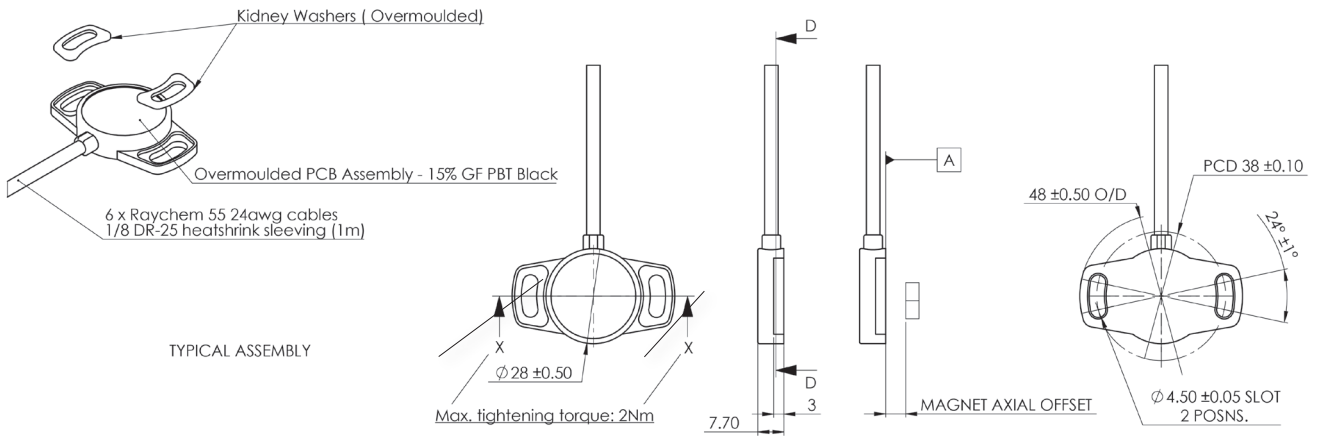
Based on the well proven 28 mm diameter Euro-XP angle sensor, the puck option is a two piece design with a separate magnet. With redundant output this compact and fully non-contacting Hall Effect sensor features IP68 sealing and will suit arduous high-duty cycle position feedback applications.

Specifications	
Mechanical	
Typical Life Cycle	In excess of 100 million cycles
Measuring range	360° redundant, signal 1 cw, signal 2 ccw
Housing	High grade temperature resistant plastic
Tightening torque	Maximum recommended tightening Torque 2Nm
Mounting	Customer to ensure correct suitability and fitment of mounting bolts
Environmental	
Operating temperature	-40° C to +125° C (Short term 150° C)
Vibration	20...2000 Hz; Amax = 0.75 mm; amax = 31.4 g to IEC 60068-2-6
Electrical	
Supply Voltage	5V +/- 0.5V
Output signal	Ratiometric 5%...95% of supply (+/-25mv of specified electrical output range for both start & end voltage) PWM frequency 100Hz... 1000Hz, 1000Hz default, duty cycle between 5%-95%
Independant linearity	+/- 0.5% of each signal range
Sample Rate (Fast Mode)	5 kHz
System Propagation Delay (Fast Mode)	600 µs
Isolation resistance	200 MΩ (500 VDC, 1 bar, 2s)
Electrical connection	See ordering code/wiring diagram
Cable Type	Raychem Spec 55, 24 AWG; Sleeving - Raychem DR25
MTTFd	370 years

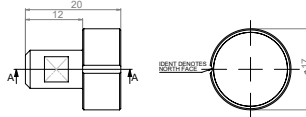
# EURO XPK PUCK TYPE PROGRAMMABLE SENSOR



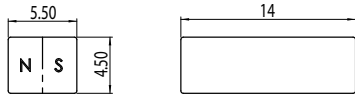
## Dimensions in mm



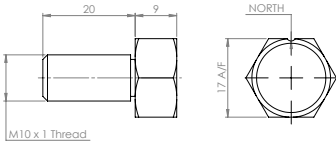
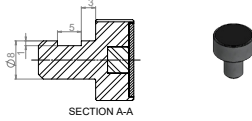
Small magnet -01



Plug magnet -04



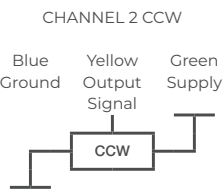
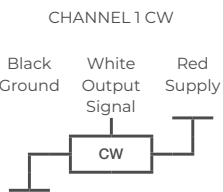
Large magnet -03



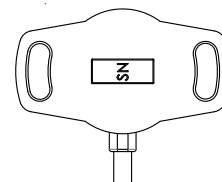
M10 magnet - 02

Notes for magnets: Maximum permitted radial offset = +/- 1 mm

Magnet type	Distance from XPK Face
M10 Screw Magnet	0,5 - 5 mm
Small Magnet	0 - 2 mm
Large Magnet	1,5 - 6 mm
Plug Magnet	0,5 - 5 mm



ORIENTATION - midpoint of electrical travel shown



Mating face of XPK

# EURO XPK PUCK TYPE PROGRAMMABLE SENSOR



## Ordering information

(Please use the characters in the chart below to construct your product code)

Sample Code	Euro-XPK	-	2838	-	8xx	-	2 1 4	-	911	-	00*
<b>Series</b>	Euro-XPK										
<b>Mechanical version</b>	38 = separate Puck und Magnet Design										
<b>Electrical Angle</b>	36 = Standard electrical angle 360° xx = Optional angle - from 30° to 360°/ in 10° steps (z.B. 08=80°)										
<b>Supply voltage Ub</b>	2 = Ub = 5 VDC										
<b>Interface parameters</b>	1 = 5..95%, ratiometric to supply voltage Ub (0,25..4,75 VDC) 2 = 10..90% ratiometric to supply voltage Ub (0,5..4,5 VDC) 3 = PMW										
<b>Output characteristics</b>	1 Rising characteristic cw 2 Rising characteristic ccw 4 Crossed outputs, channel 1 rising cw Other output characteristics on request										
<b>Electrical Connection Cable Length</b>	911 = Raychem Spec 55, 24 AWG; Sleeving - Raychem DR25 XL ETFE: Ø = 0,94 mm; 0,24 mm²; L = 500 mm (+/- 10 mm)										
<b>Magnet choice</b>	00 No magnet 01 Small magnet 02 Screw magnet 03 Large magnet 04 Plug magnet										

# EURO XPK PUCK TYPE PROGRAMMABLE SENSOR



**\* Note - Magnet options 01, 02, 03 or 04 are selected in the ordering code and a single magnet is included.**

Additional or alternative magnets can be ordered separately as spare parts using the following codes:

93816 - XPK Small Magnet-01

93817 - XPK M10 Magnet-02

93818 - XPK Large Magnet-03

94031 - XPK Plug Magnet-04

**Un-housed magnets do not have polarity marked but can be marked if requested.  
Custom magnet housings are available.**

**The following sensor models are available as standard products:**

93753 Euro-XPk-2838-836-214-911-00

95293 Euro-XPk-2838-806-214-911-00

95294 Euro-XPk-2838-812-214-911-00

95295 Euro-XPk-2838-818-214-911-00

93816 XPK Small Magnet-01

93817 XPK M10 Magnet-02

93818 XPK Large Magnet-03

94031 XPK Plug Magnet-04