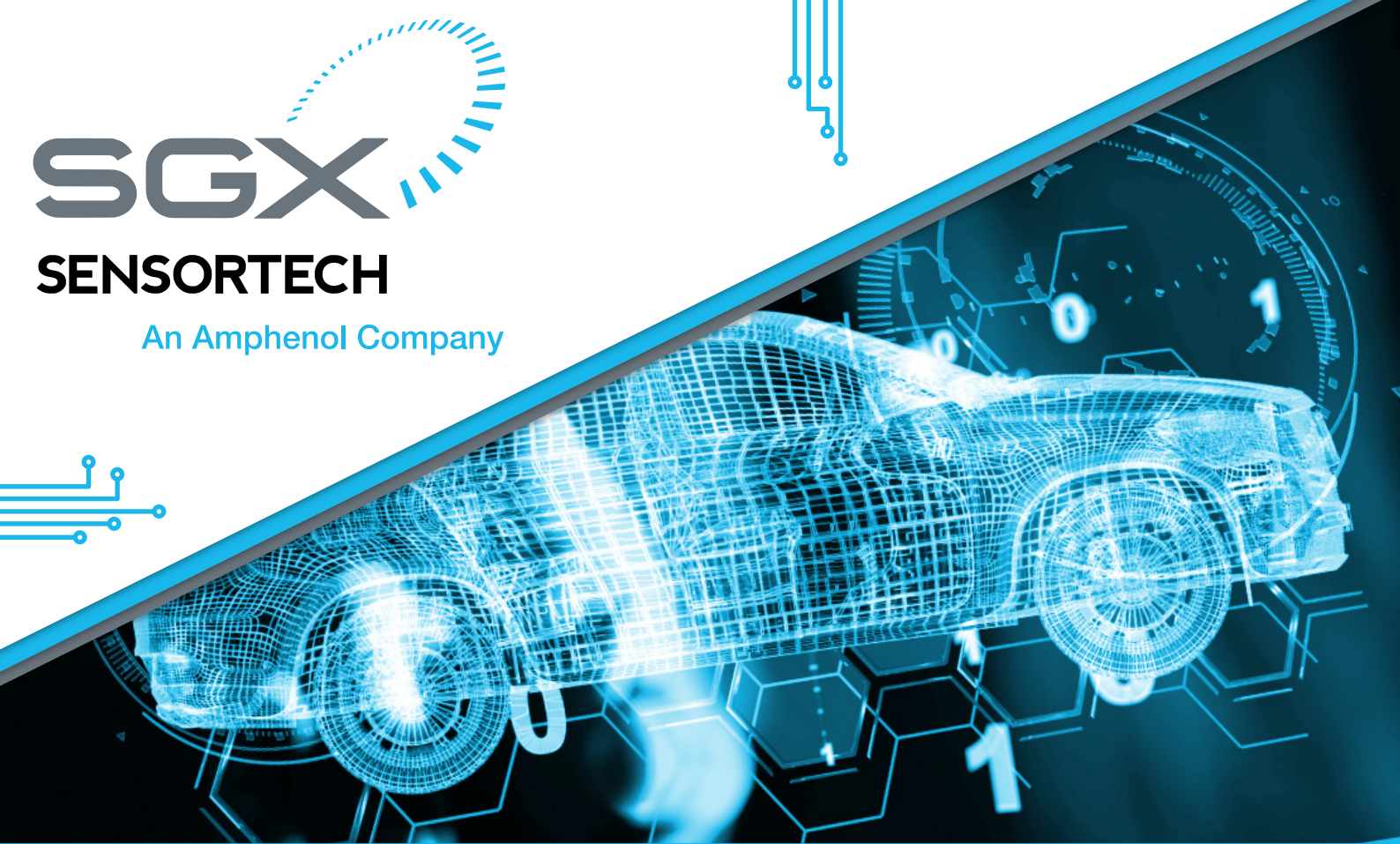


SGX

SENSORTECH

An Amphenol Company



SGX-BLD1

Hydrogen and Battery Leakage Detection Sensor

Datasheet

SGX-BLD1 is a Hydrogen Leak Detection sensor, designed for automotive and industrial applications and offers a CAN Output communication. The sensor has to be placed near the Hydrogen system or in the battery enclosure allowing to sense H₂ gas during a leakage or Li-ion battery failure mode.

The SGX-BLD1 solution will allow the Battery or Hydrogen Management System to monitor the safe operation of the system and provides an output signal when a leakage occurs.

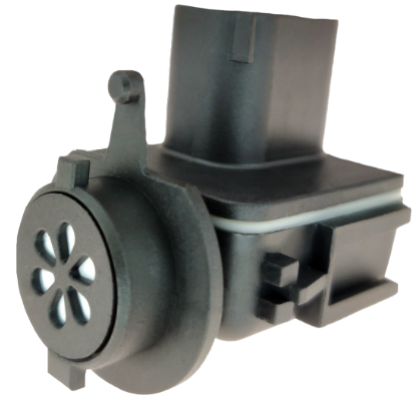


Quality, Safety, Responsibility

Functional specifications

Features

- Fast response time (< 1 s)
- Thermal conductivity gas sensor (high reliability technology)
- Low power consumption (65mA)
- CAN 500kbps High Speed communication
- Watertight housing IP6K7
- Configurable ID
- CAN Wake Up



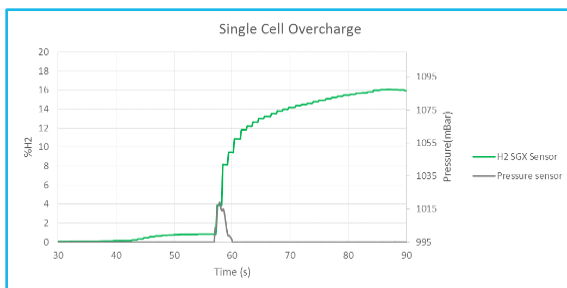
Principle

There are different failure modes possible in the hydrogen fuel-cell or li-ion battery system. To prevent a dangerous situation for passengers, the Fuel-cell or Battery management system should send an alarm to the passengers to leave.

Inside Li-ion battery packs, our sensors can robustly and early detect the hydrogen gas during various failure modes of a thermal runaway event. Other sensing technologies, like pressure measurements, often only detect some of these failure modes and will not work well in all battery pack architectures as venting solutions can prevent a pressure increase detection.

See below some failure mode examples with a comparison between H2 SGX sensor and a pressure sensor:

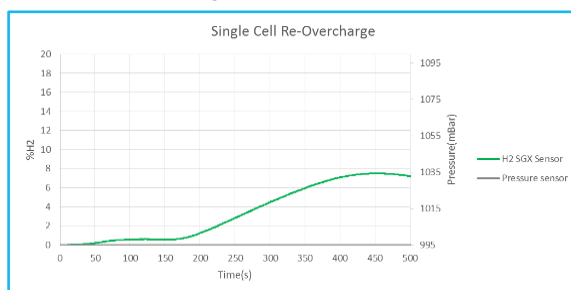
Cell Overcharge:



- The H2 sensor (**green curve**) is reacting 10 seconds faster than the pressure sensor

- Small pressure increase in short period (**gray curve**) and similar to environment change

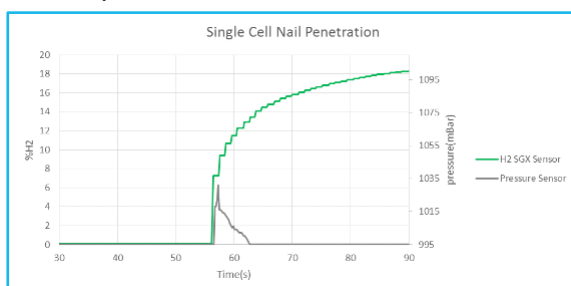
Cell Re-Overcharge:



- The H2 sensor is reacting (**green curve**).

- The pressure sensor **is not reacting** (**gray curve**).

Cell Nail penetration:



- The H2 sensor is reacting (**green curve**) faster than the pressure sensor (**gray curve**).

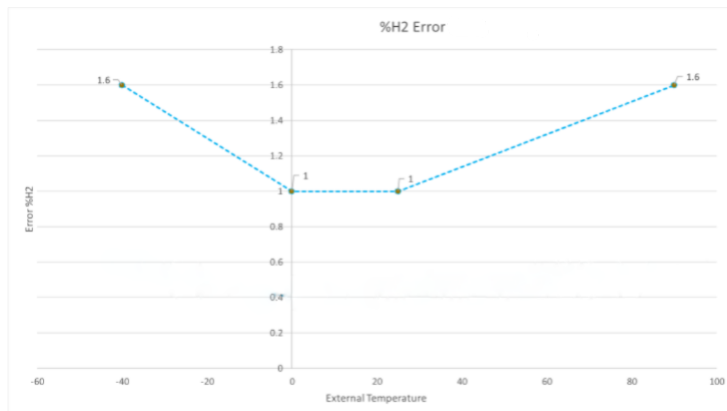
- Small pressure increase in short period (**gray curve**) and similar to environment change.

Main technical characteristics

| | |
|----------------------------------|---|
| Temperature and humidity range | 0~95% RH -40°C to +85°C |
| Temperature storage | -40°C to +85°C |
| IP level | IP6K7 |
| Fixing | Bayonet Delphi clip (optional) |
| Connector | 4 pins Tyco Electronics AMP-1-0967640-1 coding A |
| External dimensions | 39mm x 35mm x 27 mm |
| Weight | < 15 g |
| Power supply operating range | 9 to 16V |
| Current consumption (Average) | < 65 mA, @12V |
| Output signal | CAN 500kbps High Speed |
| H2 Concentration range | 0-4 vol.% |
| Accuracy | 1.0 - 1.6% (in accordance with the table below ¹) |
| Response time | < 1 s (one CAN frame every 100ms) |
| Measurement Frequency | one can frame every 100ms |
| Start-up time | < 400ms |
| Expected Lifetime | 10 years or 13'000h ² |

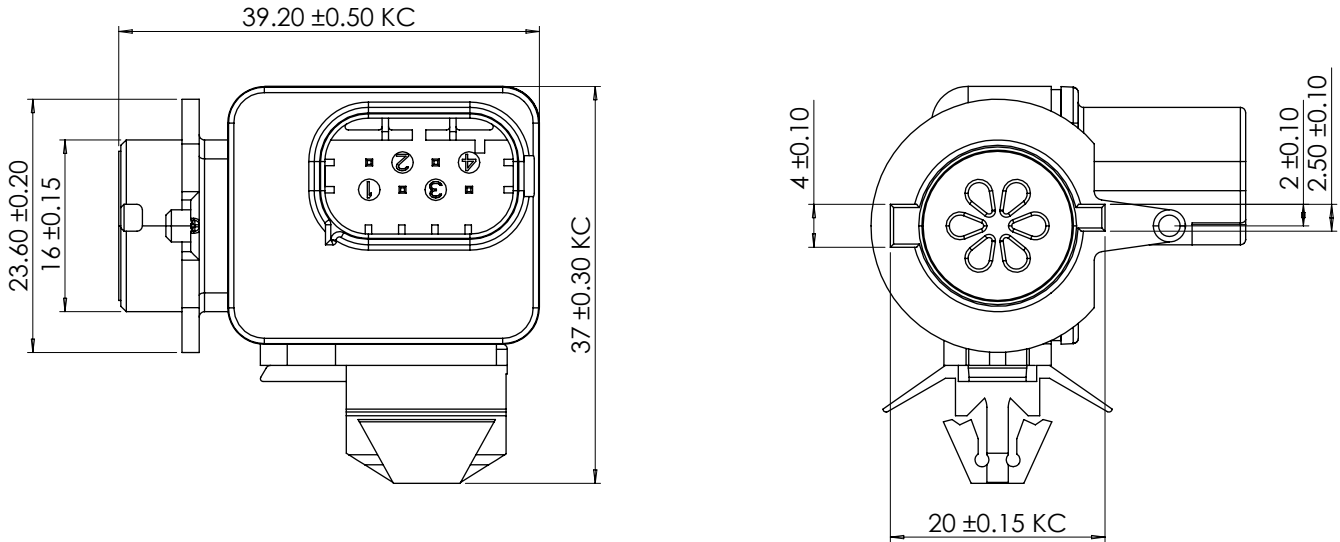
¹ Under 500mL/s airflow and stable condition point

² Can be higher with a lower measurement frequency and depend on detection time target

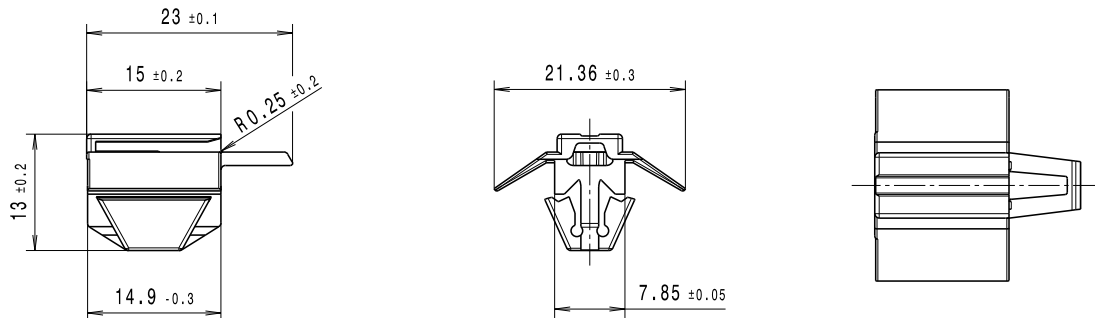


SGX-BLD1

Sensor drawing (with clip)



Delphi clip drawing



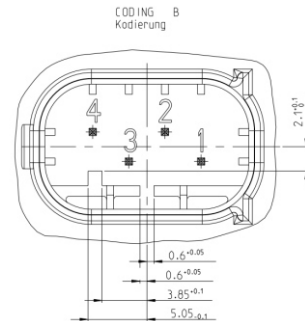
Sensor variants and additional accessories

| | Part Number |
|---------------------------|-------------|
| Sensor SGX-BLD1 | SGX-BLD1 |
| Sensor SGX-BLD1 with clip | SGX-BLD1C |
| Delphi clip | BLD_Clip |
| Connection cable | CAN-Cable |

Interface and integration

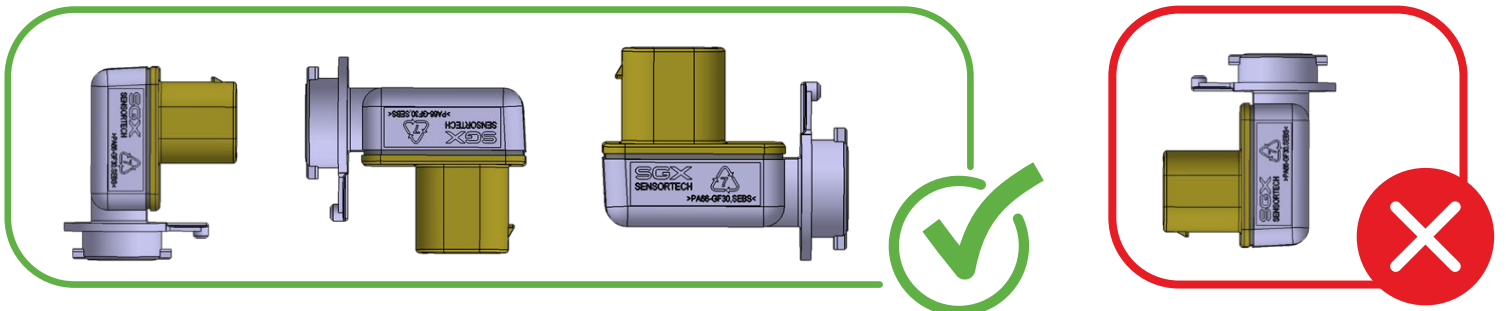
Principle

| | |
|-----------------------|---|
| Connector type | Tyco Electronics AMP-1-0967640-1 coding A |
| Communication | 500kbps High Speed |
| Pinout | Pin1: Vbat Pin2: Ground Pin3: CAN Low Pin4: CAN High |

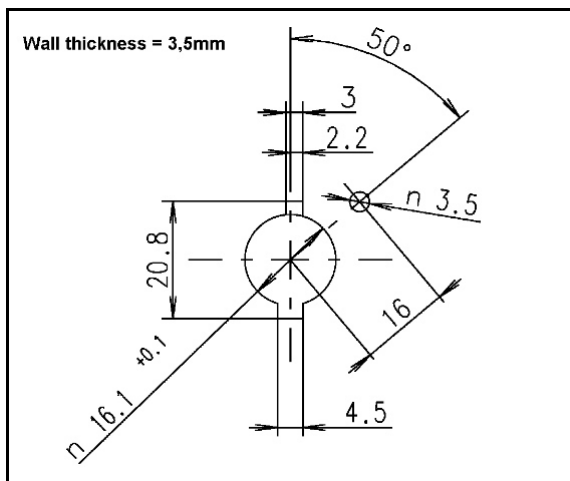


Recommendation for integration

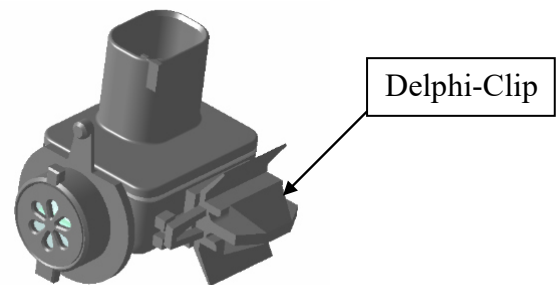
The sensor must be exposed to measure the air from the **battery pack only**. Preferably, the filtering membrane included in the module should be facing downward. If this is not possible, it should be vertical, but should never be facing upward, to prevent accumulation of dirt, water.



Bayonet fixing, mating with following interface:



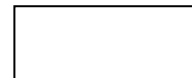
Optional, the sensor can be mounted with a standard Delphi-clip.



Recommended hole for Delphi-Clip

15±0.1mm

8±0.1mm



Sheet Metal Thickness (Max) 0.8 – 2.8mm

Proposed CAN frame description

The default ID is 0x256 and CAN frame layout is as shown below:

| | 7 | 6 | 5 | 4 | 3 | 2 | 1 | 0 |
|---|---------------------------|-------------------------------|--------------------------|--|-----------------------|--------------------------------|---------------------------|----------------------------|
| 0 | Temperature_u8 msb 7 | 6 | 5 | 4 | 3 | 2 | 1 | lsb 0 |
| 1 | msb 15 | 14 | 13 | 12 | 11 | 10 | 9 | 8 |
| 2 | Hydrogen_u16 23 | 22 | 21 | 20 | 19 | 18 | 17 | 16 |
| 3 | B_task_timing_issue 31 | B_over_under_temperatur 30 | B_rht_sensor_issue 29 | B_temperature_plausibility_issue 28 | B_h2_saturation 27 | B_reverse_polarity_issue 26 | B_input_overcurrent 25 | B_under_over_voltage 24 |
| 4 | Voltage_u8 msb 39 | 38 | 37 | 36 | 35 | 34 | 33 | lsb 32 |
| 5 | Humidity_u8 msb 47 | 46 | 45 | 44 | 43 | 42 | 41 | lsb 40 |
| 6 | Roll_Counter_u8 msb 55 | 54 | 53 | 52 | 51 | 50 | 49 | lsb 48 |
| 7 | 63 | 62 | 61 | 60 | 59 | 58 | 57 | 56 |

Signal factor and offset are described below:

| Name | Message | Start bit | Length | Byte Order | Value Type | Initial Value | Factor | Offset | Min. | Max. | Unit |
|--------------------------------|-----------------|-----------|--------|------------|------------|---------------|--------|--------|------|------|------|
| Temperature (u8) | Sensor_Status_1 | 0 | 8 | Motorola | Unsigned | -55 | 1 | -55 | -55 | 195 | °C |
| Hydrogen percent (u16) | Sensor_Status_1 | 16 | 16 | Motorola | Unsigned | 0 | 0.01 | 0 | 0 | 100 | % |
| Overvoltage | Sensor_Status_1 | 24 | 1 | Intel | Unsigned | 0 | 1 | 0 | 0 | 1 | |
| Input overcurrent | Sensor_Status_1 | 25 | 1 | Intel | Unsigned | 0 | 1 | 0 | 0 | 1 | |
| Reverse polarity issue | Sensor_Status_1 | 26 | 1 | Intel | Unsigned | 0 | 1 | 0 | 0 | 1 | |
| H2 saturation | Sensor_Status_1 | 27 | 1 | Intel | Unsigned | 0 | 1 | 0 | 0 | 1 | |
| Temperature Plausibility issue | Sensor_Status_1 | 28 | 1 | Intel | Unsigned | 0 | 1 | 0 | 0 | 1 | |
| RHT sensor issue | Sensor_Status_1 | 29 | 1 | Intel | Unsigned | 0 | 1 | 0 | 0 | 1 | |
| Overtemperature | Sensor_Status_1 | 30 | 1 | Intel | Unsigned | 0 | 1 | 0 | 0 | 1 | |
| Task timing issue | Sensor_Status_1 | 31 | 1 | Intel | Unsigned | 0 | 1 | 0 | 0 | 1 | |
| Voltage (u8) | Sensor_Status_1 | 32 | 8 | Motorola | Unsigned | 0 | 0.1 | 0 | 0 | 25.5 | V |
| Humidity (u8) | Sensor_Status_1 | 40 | 8 | Motorola | Unsigned | 20 | 0.5 | 0 | 0 | 100 | % |
| Roll Counter (u4) | Sensor_Status_1 | 48 | 8 | Motorola | Unsigned | 0 | 1 | 0 | 0 | 15 | |

- Voltage, Temperature and Humidity are internal for Hydrogen compensation purpose
- Hydrogen is the output of the sensor in %
- The bits are for diagnosis purpose
- Roll counter is a counter that increases from 0 to 15, with an increase of 1 at each frame sending

DISCLAIMER:

SGX Europe Sp. z o.o. reserves the right to change design features and specifications without prior notification. We do not accept any legal responsibility for customer applications of our sensors. SGX Europe Sp. z o.o. accepts no liability for any consequential losses, injury or damage resulting from the use of this document, the information contained within or from any omissions or errors herein. This document does not constitute an offer for sale and the data contained is for guidance only and may not be taken as warranty. Any use of the given data must be assessed and determined by the user thereof to be in accordance with federal, state and local laws and regulations. All specifications outlined are subject to change without notice.

SGX Europe Sp. z o.o. sensors are designed to operate in a wide range of harsh environments and conditions. However, it is important that exposure to high concentrations of solvent vapours is to be avoided, both during storage, fitting into instruments and operation. When using sensors on printed circuit boards (PCBs), degreasing agents should be used prior to the sensor being fitted. SGX Europe Sp. z o.o. makes every effort to ensure the reliability of its products. Where life safety is a performance requirement of the product, we recommend that all sensors and instruments using these sensors are checked for response to gas before use.

Copyright© 2012-2025 SGX Sensortech All rights reserved.

Trademarks and registered trademarks are the property of their respective owners.

No part of this publication may be reproduced, distributed, or transmitted in any form or by any means, including photocopying, recording, or other electronic or mechanical methods, without the prior written permission of the publisher, except in the case of brief quotations embodied in critical reviews and certain other non-commercial uses permitted by copyright law.

For permission requests or technical support please contact or write to the publisher, addressed "Attention: Permissions Coordinator."