

DUAL-CHANNEL TEMPERATURE LOGGER



LogTag®

UTRED30-16

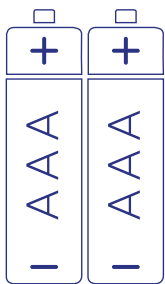
Dual-Channel 30 Day Display Logger



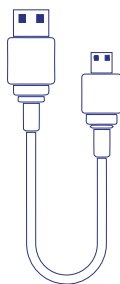
The LogTag® UTRED30-16 Temperature Recorder measures and stores up to a total 32,000 temperature readings, 16,000 readings per channel. The logger supports the ST100 probe and can be used on one or both channels if required.

It features a large easy-to-read display and is designed to show 'at a glance' if temperature excursions have occurred during the current day and up to the previous 29 days. If temperature readings are outside pre-set alarm limits, it is indicated by a large X on the display and, if configured, the audible alarm will sound.

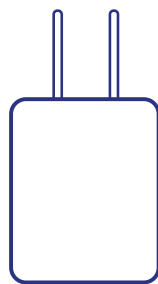
Accessories



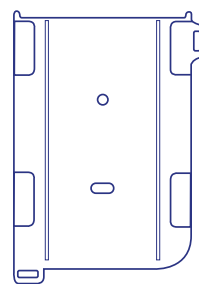
2x AAA Batteries
Not Included



USB Cable
Included



AC Adapter[^]
Included



UTRED/UTREL30 Wall Mount
Not Included



Glycol Buffer
Not Included



Socket Cover*
Included (Optional to use)



External Probe**
Not Included. (Required)

Compatible probes below:

| | |
|---------------|--|
| ST100J | 40mm tip length, ø3.2mm. |
| ST100K | 65mm tip length, ø3.2mm. |
| ST100L | 90mm tip length, ø3.2mm. |
| ST100S | 22mm tip length, ø5mm. |
| ST100T | 105mm tip length, ø5mm. |
| ST100H | Handled with 105mm tip length, ø5mm. |
| ST100B | Untipped (bare probe). |
| STX50 | 5 Meter extension cable for ST10/ST100 probes. |

[^]US and EU adapter only

*Optional to insert inside an unused Channel port

**Hot swappable external sensor probes.

Probes are available with a 1.5m or 3m cable.
E.g. ST100J-15 for 1.5m or ST100J-30 for 3m cable

Features



Read current temperature and latest Min-Max temperature at a glance.



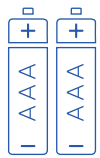
Two socket external probe with auto channel swap function.



Audible alarm and flashing red LED signals a temperature alarm.



Check and reset Min-Max temperature reading at any time.



Can be powered by 2x AAA batteries (user replaceable) if not external powered.



View alarm status for up to 30 days at a glance.



Second battery backup via a coin cell to ensure no data is lost.



Measure and store up to 16,000 readings for each channel— enough for 67 days at 6 minute logging.



Download data via LogTag Analyzer or as a PDF (no software required).



Inspections can be recorded at the push of a button.

Applications



Bio Science



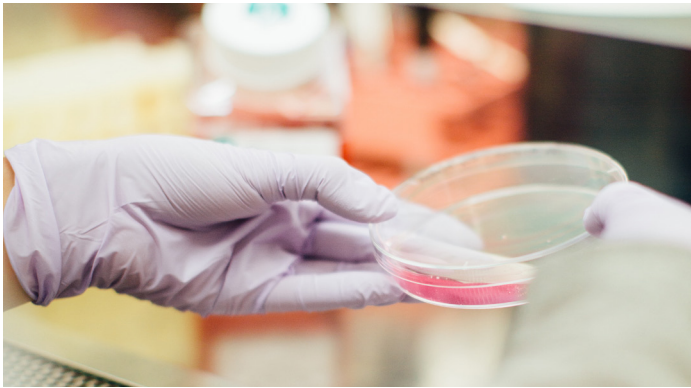
Food Science



Cold Room



Blood banks



Bio-Pharma / Bio Technology



Pharmaceutical & Vaccines



Bio Storage & logistics



Life Sciences

Specifications

| | |
|---|---|
| Product Model | UTRED30-16. |
| External Sensor Measurement Range | -40°C to +99°C. (-40°F to 210°F). |
| Operating Temperature Range | -30°C to +60°C 0 – 99 % RH (non-condensing) |
| Storage Temperature Range | -10°C to +40°C (32°F to +104°F). |
| Rated Temperature Reading Resolution | Better than 0.1°C (0.2°F) for -30°C to +60°C (-22°F to +140°F). Better than 0.2°C (0.4°F) for -40°C to -30°C (-40°F to -22°F). Better than 0.5°C (0.9°F) for +60°C to +99°C (+140°F to +210°F). LogTag Analyzer currently displays to one decimal place of °C or °F. The native resolution is what is stored in the LogTag®. |
| Sensor Reaction Time | Typically less than 2 minutes(T90) in moving air (1m/s) for ST100S type |
| Rated Temperature Reading Accuracy | Better than ±0.5°C (±0.9°F) for -20°C to +40°C (-4°F to +104°F), typically ±0.3°C (0.6°F). Better than ±0.8°C (±1.4°F) for -40°C to -20°C (-40°F to -4°F), typically ±0.5°C (0.9°F). Better than ±0.8°C (±1.4°F) for +40°C to +70°C (+104°F to +158°F), typically ±0.7°C (1.3°F). Better than ±1.2°C (±2.2°F) for +70°C to +99°C (+158°F to +210°F), typically ±1°C (1.8°F). |
| Probe Connectivity | Up to 2 |
| Probe Compatibility | All ST100 precision thermistor external probes can be interchangeably connected to the UTRED30-16. Please refer to the Accessories section for compatible External Probes. Different probe models can be used for each channel. Not compatible with ST10 sensors. |
| Recording Capacity | 32,000 total log memory. Provides 16,000 temperature readings per channel. Day summary statistics memory (for display on LCD): up to 30 days of Min/Max/duration and alarm trigger statistics. |
| Sampling Interval | Configurable from 30 seconds to 18 hours. (Typically 5 minute logging) |
| Alarms | Up to 6 individually configurable alarms for each channel. Possible to set alarms separately for Channel 1 and Channel 2. |
| Logging Start Options | Push button start or specific date & time. Optional start delay. |
| Download Time | Typically with full memory (32,000 readings) in less than 20 seconds. |
| Environmental | IP61 (when vertically mounted or hung with USB dust-cap in place). |
| Power Source | 5V via micro USB socket or 2 x 1.5V AAA batteries. CR2032 LiMnO ₂ coin cell (backup logging function only). |
| Battery Life | AAA battery up to 12 months - if unit is operated without power supply. |
| Real Time Clock | Built-in real time clock. Typical accuracy ±25ppm @ 25°C (equivalent to 2.5 seconds/day). Rated temperature coefficient is -0.034 ±0.006ppm/°C (i.e typically +/- 0.00294 seconds/day/°C). |
| Standard Remote Probe Cable Lengths | Standard: 1.5m (4'11"). Extended: 3m (9'10") (recommended maximum). |
| Remote Probe Cable Type | PTFE (FDA food contact rated) coaxial. |
| Connection Interface | USB 2.0 / Micro USB Socket. |
| Size | 141mm(H) x 72mm(W) x 18mm(T). |
| Weight | 156g with AAA batteries, (132g – excluding probe and AAA batteries). |
| Case Material | Polycarbonate. |

