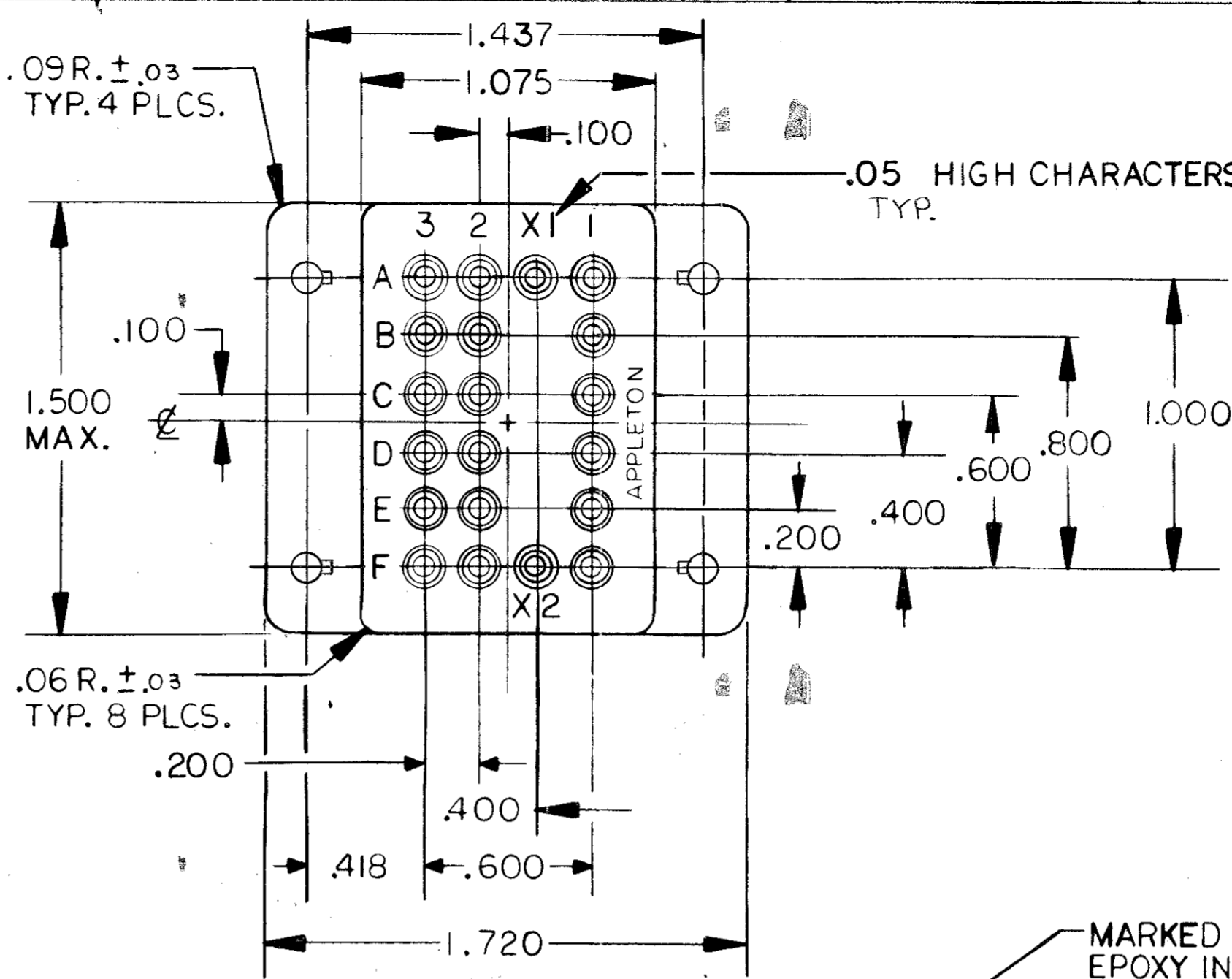


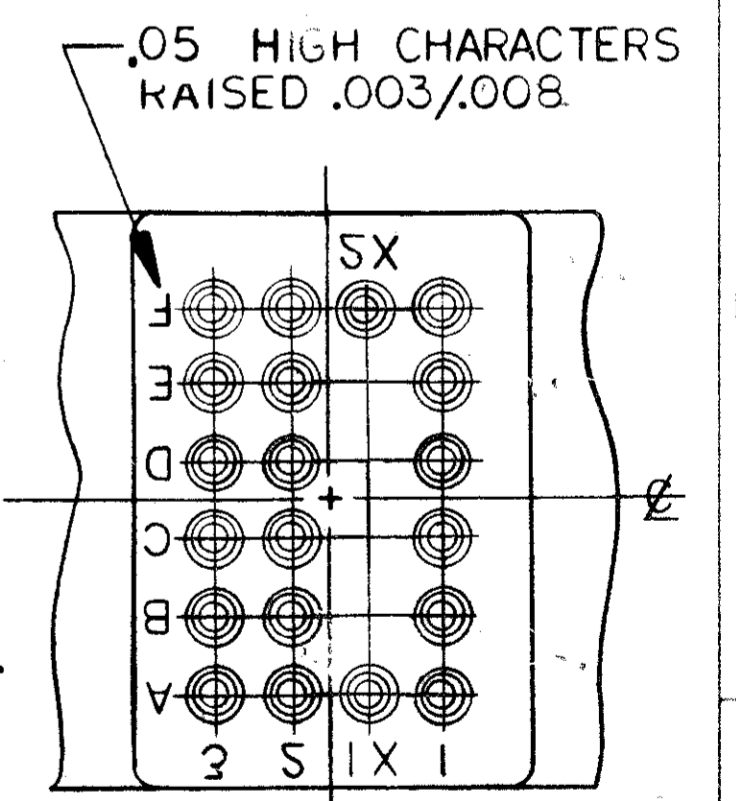
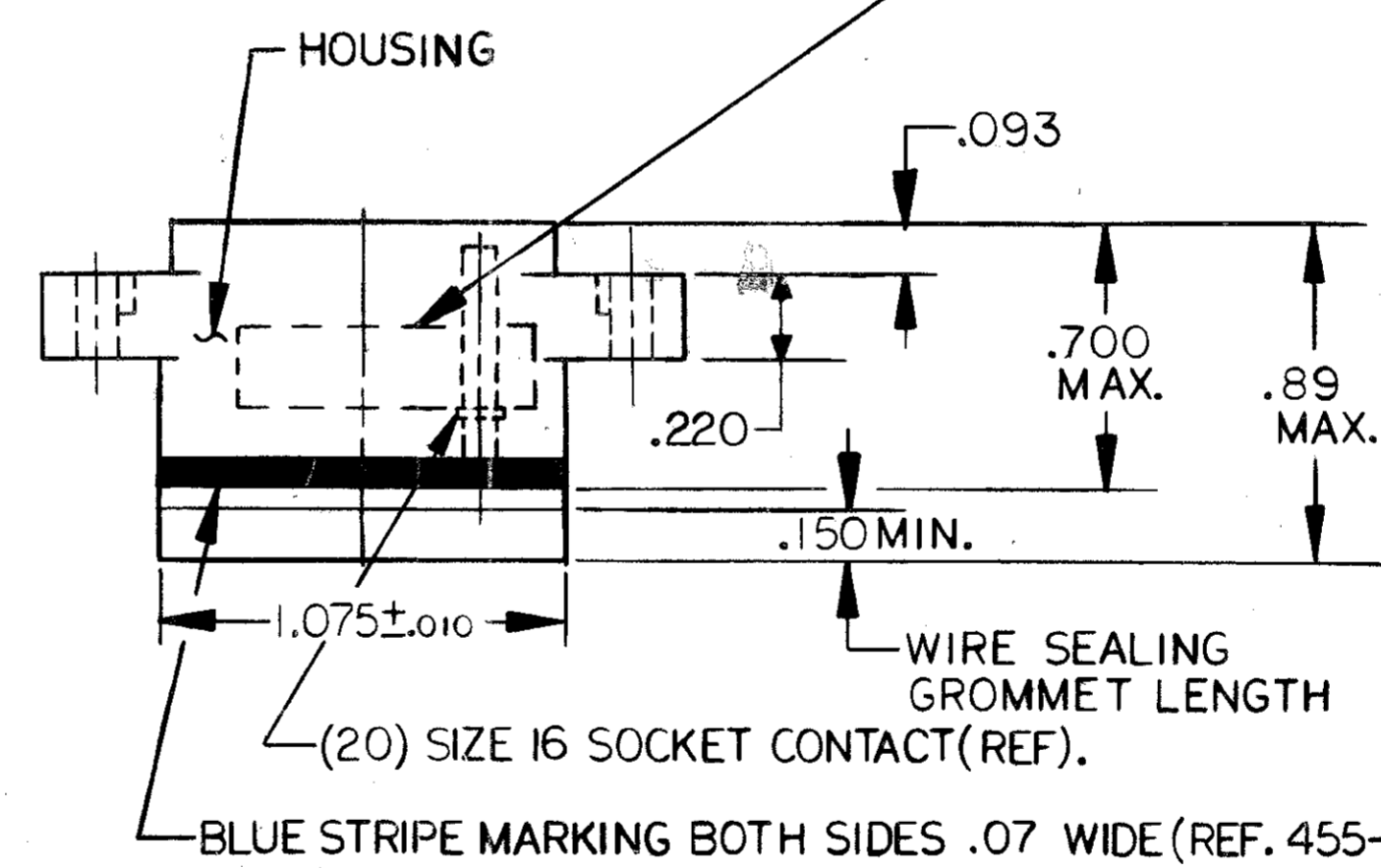
NOTES

- HOUSING SHALL BE THERMOSETTING MOLDING MATERIAL PER MIL-M-14, TYPE SDG-F COLOR: GREEN.
- SEALING GROMMET MATERIAL SHALL BE SILICONE RUBBER PER ZZ-R-765 COLOR: RED.
- SOCKET CONTACT SHALL BE COPPER ALLOY GOLD PLATED PER MIL-G-45204, TYPE II, GRADE C, CLASS I.
- STUD MATERIAL AND MOUNTING HARDWARE SHALL BE STAINLESS STEEL PASSIVATED UNLESS OTHERWISE SPECIFIED.
- SOCKET CONTACTS ARE OF CLOSED ENTRY TYPE AND DESIGNED TO COMPLY WITH TEST REQUIREMENTS OF MIL-C-39029 INCLUDING CRIMP TERMINATION.
- M22520/1-01 CRIMP TOOL AND M22520/1-02 POSITIONER SHALL BE USED TO TERMINATE SOCKET CONTACTS TO THEIR RESPECTIVE WIRE SIZES.
- M81969/14-03 TOOLS SHALL BE USED FOR INSERTING AND REMOVING WIRED SOCKET CONTACTS.
- ALL HARDWARE SUPPLIED UNASSEMBLED IN SEPARATE BAG WITHIN SOCKET PACKAGE.
- CONTACTS SUPPLIED UNASSEMBLED IN SEPARATE BAG WITHIN SOCKET PACKAGE SEE TABLE.
- WEIGHT: .176 LBS (80g) MAX., INCLUDING HARDWARE AND CONTACTS.
- INSTALLATION TORQUE REQUIREMENTS:
 THREAD SIZE 4-40 = 4 ± 1.0 IN.-LBS.
 THREAD SIZE 10-32 = 18 ± 1.0 IN.-LBS.
- THE SEALING GROMMET IS DESIGNED TO SEAL OVER THE FOLLOWING WIRE DIA'S.: SIZE 16 .065 MIN. TO .109 MAX.
- UNIT PACKAGE RELAY SOCKET PER EC-034 TYPE I SILICONE RUBBER GASKET (SUPPLIED WITH RELAY)

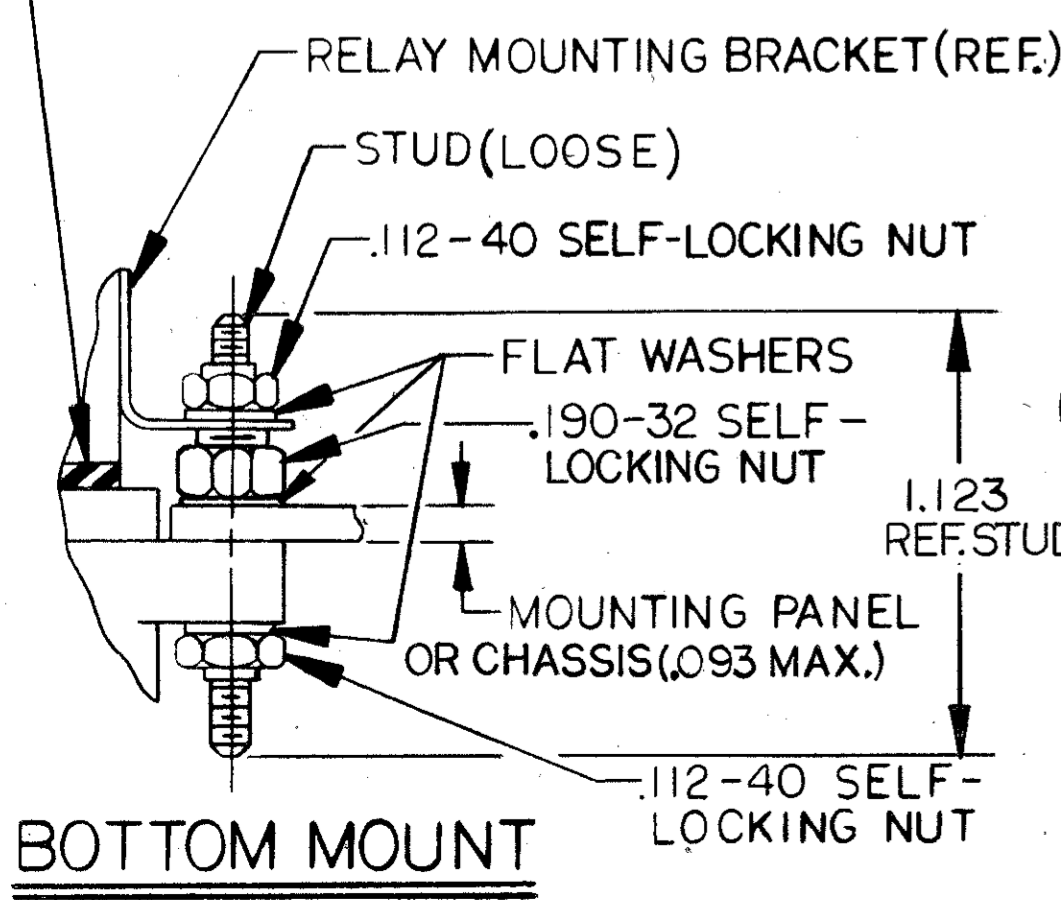
LTR/ECN		DESCRIPTION	DATE	APPD
-	835	RELEASE PER ECN		
A	1199	ADDED NOTE # 13 CHANGED NOTE # 9	2/11/88	YAC
B	1707	ADD MIL. P/N TO MRKG	7/23/90	MC
C	2344	CORRECT MARKING CALLOUT	28 DEC 94	
D	2478	REVISE MARKING	28 SEP 95	



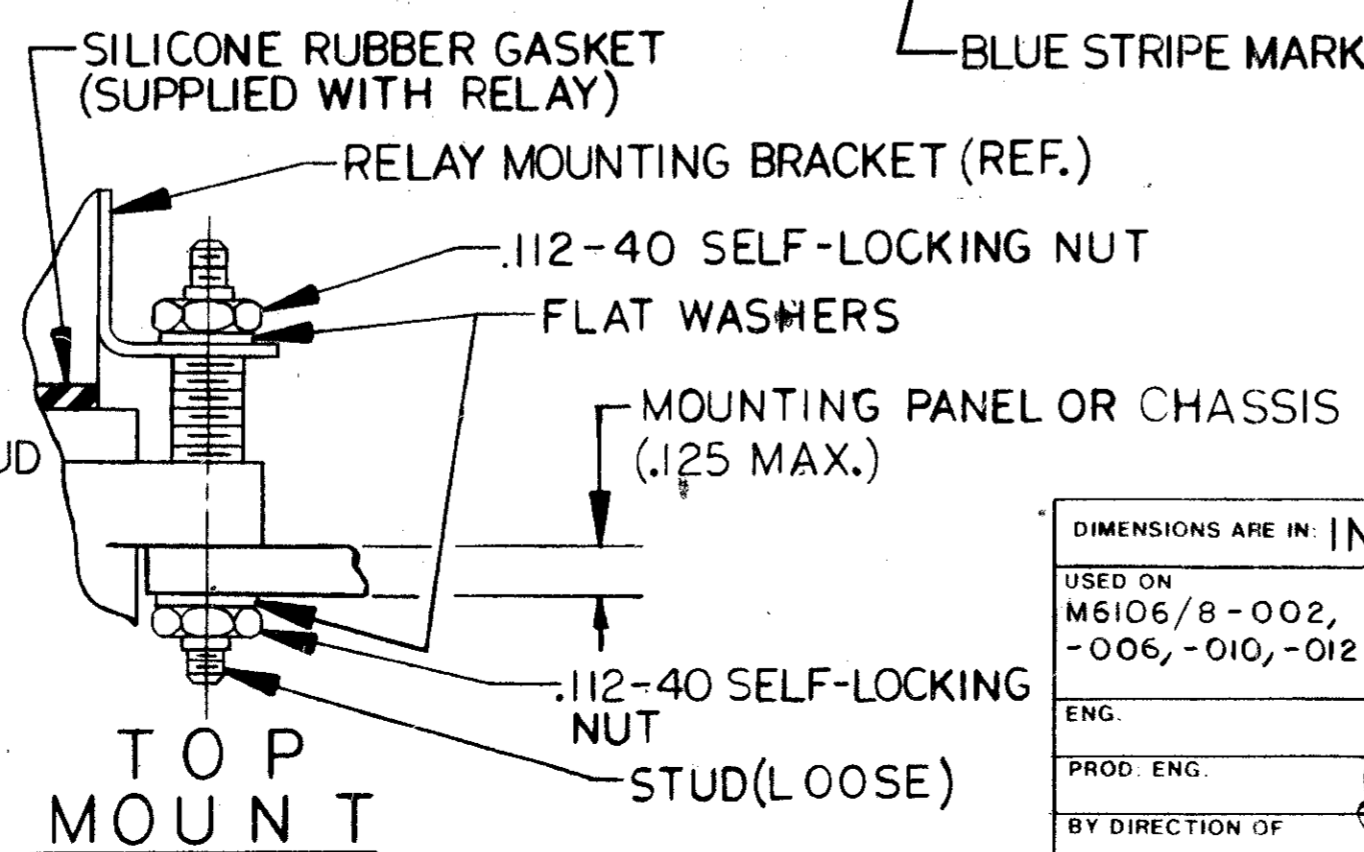
MARKED IN .06 HIGH CHARACTERS USING BLACK EPOXY INK IN AREA AS SHOWN. DATE CODE "M12883/47-01 J 58982 XXXX RSE116755" PCD (BOTH P/N'S TO BE MARKED THE SAME)



BOTTOM MARKING VIEW



BOTTOM MOUNT



TOP MOUNT

RSE116755	20 SZ.16/16 SKT.CNT.	CNS119900
RSE116754	//	//
PCD PART NUMBER	CONTACTS SUPPLIED	CONTACT PART NUMBER
PARTS LIST		
PRECISION CONNECTOR DESIGNS INC. WINCHESTER, MA 01890		TITLE: M12883/47-01 RELAY SOCKET 20 POSITION SIZE 16/16 CONTACTS
USED ON: M6106/8-002, -006, -010, -012	TOLERANCES: .XX ± .01, .XXX ± .005, .XXXX ±	ANGLES: ±2°
ENG. PROD. ENG. BY DIRECTION OF	DATE: 8-26-86	MATERIAL: SEE NOTES 1 THRU 4
SCALE: 2 TO 1		CODE: 58982
		PART NUMBER: RSE116754 D