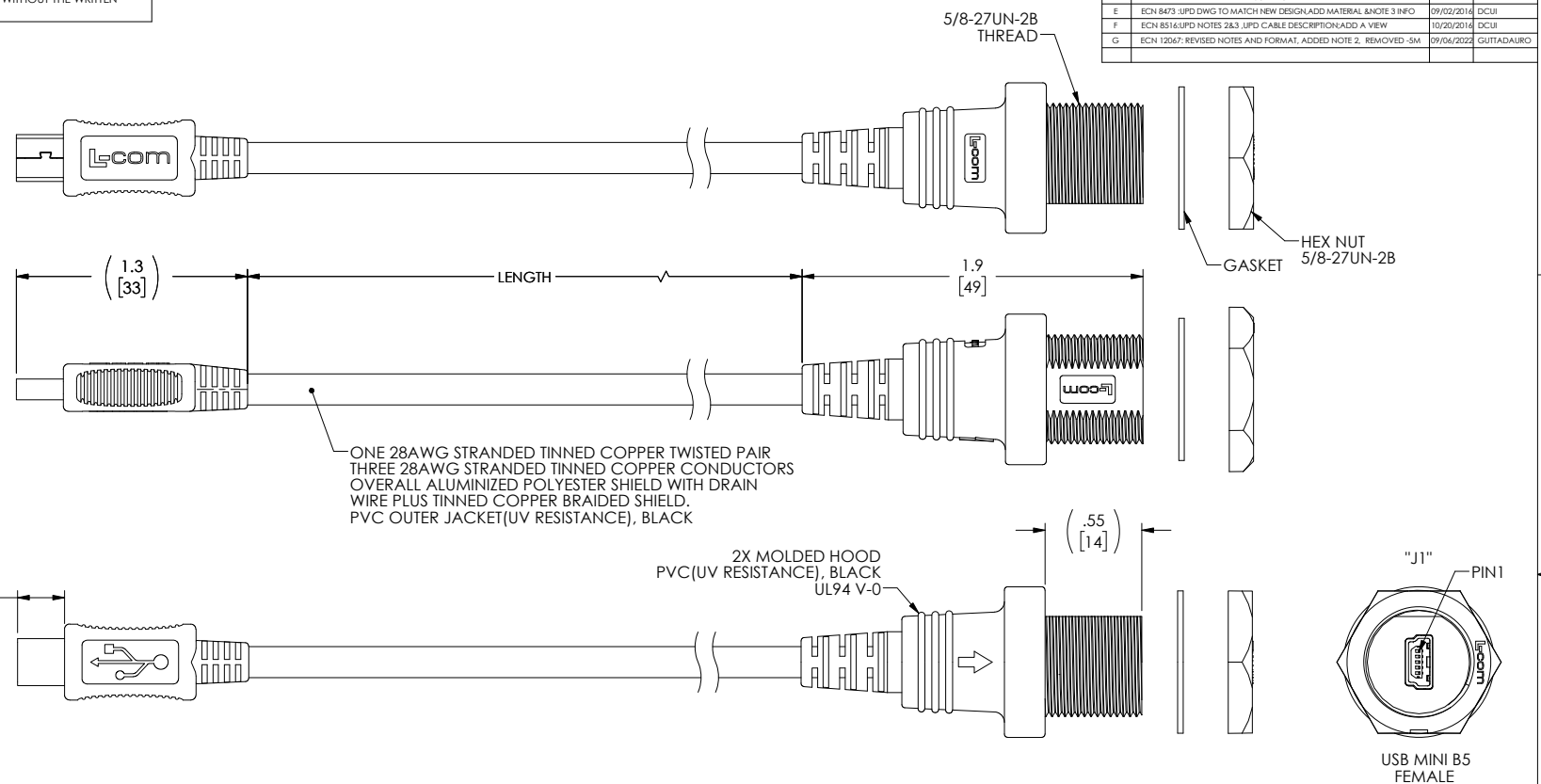
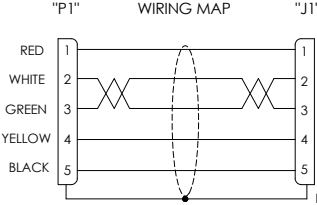
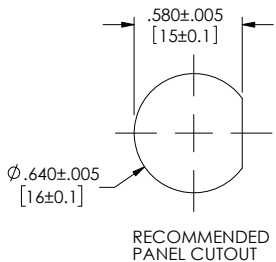
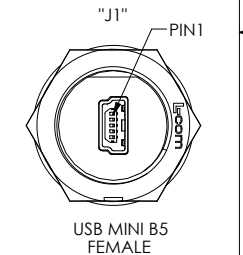
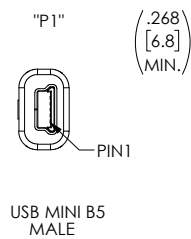


THE INFORMATION CONTAINED IN THIS DRAWING IS THE SOLE PROPERTY OF L-COM, INC. ANY REPRODUCTIONS IN PART OR WHOLE WITHOUT THE WRITTEN PERMISSION OF L-COM, INC. IS PROHIBITED.

| REVISIONS | | | |
|-----------|--|------------|-------------|
| REV | DESCRIPTION | DATE | CHANGED BY |
| E | ECN 8473:UPD DWG TO MATCH NEW DESIGN.ADD MATERIAL &NOTE 3 INFO | 09/02/2016 | DCUI |
| F | ECN 8516:UPD NOTES 2&3 ,UPD CABLE DESCRIPTION.ADD A VIEW | 10/20/2016 | DCUI |
| G | ECN 12067:REVISED NOTES AND FORMAT. ADDED NOTE 2, REMOVED -SM | 09/04/2022 | GUITTADAURO |



ONE 28AWG STRANDED TINNED COPPER TWISTED PAIR
 THREE 28AWG STRANDED TINNED COPPER CONDUCTORS
 OVERALL ALUMINIZED POLYESTER SHIELD WITH DRAIN
 WIRE PLUS TINNED COPPER BRAIDED SHIELD,
 PVC OUTER JACKET(UV RESISTANCE), BLACK



| PART NUMBER | LENGTH | |
|---------------|--------|--------|
| | FEET | METERS |
| WPUSBMB5X-03M | .98 | [.3] |
| WPUSBMB5X-05M | 1.64 | [.5] |
| WPUSBMB5X-1M | 3.28 | [1.0] |
| WPUSBMB5X-2M | 6.56 | [2.0] |

- NOTES:**
- CABLE ASSEMBLY SHALL BE TESTED FOR CONTINUITY
 - SUGGESTED MAX. TORQUE VALUE FOR HEX NUT IS 0.4N-m (3.5 lbf-in)
 - INGRESS PROTECTION RATING IS IP67 (J1 ONLY ,MATED)
 - CABLE ASSEMBLY SHALL BE INDIVIDUALLY PACKAGED IN ACCORDANCE WITH L-COM SPECIFICATION PS-0031
- REGULATORY COMPLIANCE:**
 EU RoHS DIRECTIVE (MOST RECENT RELEASED VERSION)

| | | | |
|---|--|--|--|
| <small>UNLESS OTHERWISE SPECIFIED, DIMENSIONS ARE IN INCHES (mm). OVERALL CABLE LENGTH TOLERANCE: ≤12 [305] ≤60 [1524] = +2 [51] / -0 >60 [1524] ≤120 [3048] = +4 [102] / -0 >120 [3048] ≤300 [7620] = +6 [152] / -0 >300 [7620] = +5% / -0 ALL OTHER DIMENSIONAL TOLERANCES: .31 = ± .2 [5] FRACTIONS ± 1/32 .XX = ± .02 [5] ± 1/32 .XXX = ± .005 [13] ANGLES ± 1°</small> | <small>APPROVALS</small> DRAWN BY: D.CASTRO CHECKED BY: D.FRISIELLO APPROVED BY: S.S.MITH | <small>DATE</small> 04/17/2009 04/20/2009 04/20/2009 | 50 High Street, West Mill, North Andover, MA 01845 USA. Phone: 1.800.341.5266 1.978.682.6936 |
| | <small>CONFIGURATION DETAILS OF UNDIMENSIONED FEATURES MAY VARY</small> | <small>PRODUCT DESCRIPTION</small> CA WTR PR USBMB5-F/MB5-M | |
| <small>THIRD-ANGLE PROJECTION</small> | <small>COLOR VARIATIONS MAY OCCUR</small> | <small>SCALE: NONE</small> | <small>REV G</small> |