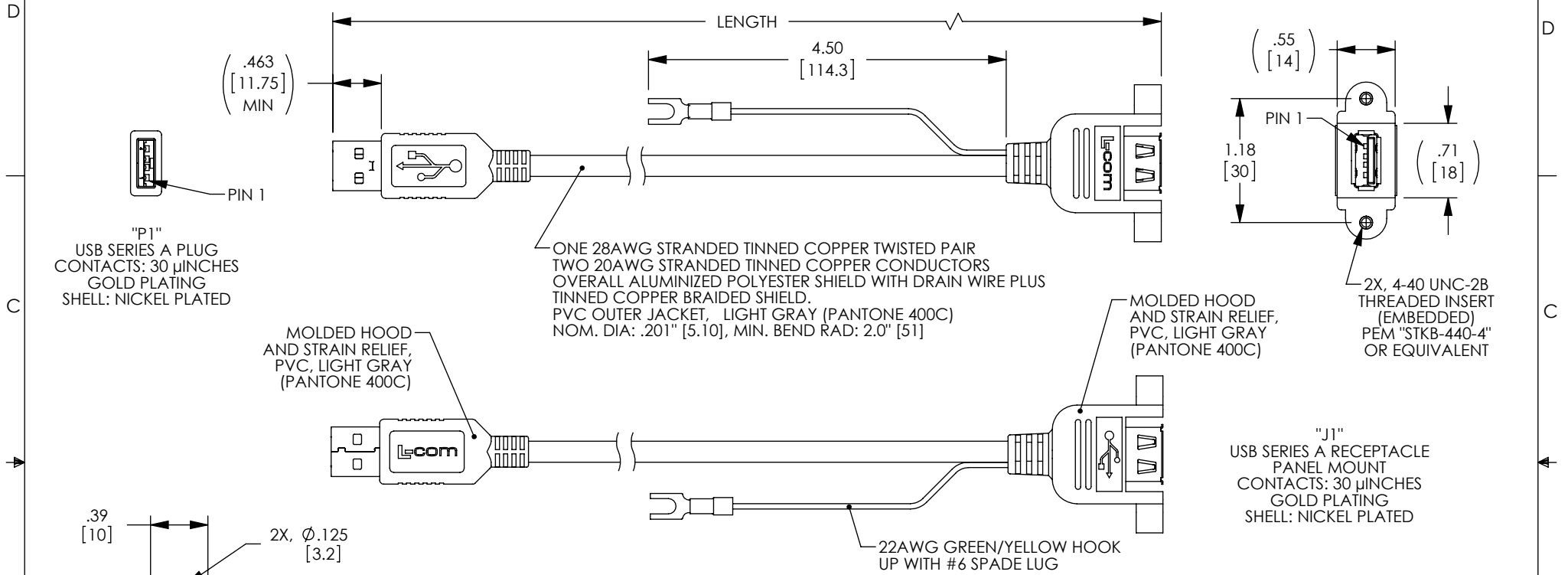


THE INFORMATION CONTAINED IN THIS DRAWING IS THE SOLE PROPERTY OF L-COM, INC. ANY REPRODUCTION IN PART OR WHOLE WITHOUT THE WRITTEN PERMISSION OF L-COM, INC. IS PROHIBITED.

REVISIONS			
REV	DESCRIPTION	DATE	APPROVED
A	INITIAL RELEASE	7/30/14	D.GRIFFIN



"P1"  
USB SERIES A PLUG  
CONTACTS: 30 μINCHES  
GOLD PLATING  
SHELL: NICKEL PLATED

ONE 28AWG STRANDED TINNED COPPER TWISTED PAIR  
TWO 20AWG STRANDED TINNED COPPER CONDUCTORS  
OVERALL ALUMINIZED POLYESTER SHIELD WITH DRAIN WIRE PLUS  
TINNED COPPER BRAIDED SHIELD.  
PVC OUTER JACKET, LIGHT GRAY (PANTONE 400C)  
NOM. DIA: .201" [5.10], MIN. BEND RAD: 2.0" [51]

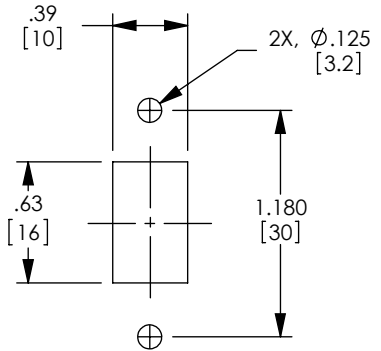
MOLDED HOOD  
AND STRAIN RELIEF,  
PVC, LIGHT GRAY  
(PANTONE 400C)

MOLDED HOOD  
AND STRAIN RELIEF,  
PVC, LIGHT GRAY  
(PANTONE 400C)

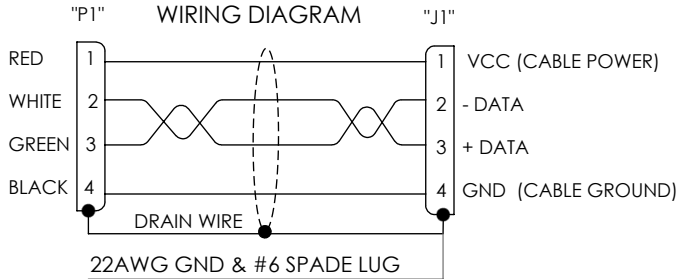
2X, 4-40 UNC-2B  
THREADED INSERT  
(EMBEDDED)  
PEM "STKB-440-4"  
OR EQUIVALENT

"J1"  
USB SERIES A RECEPTACLE  
PANEL MOUNT  
CONTACTS: 30 μINCHES  
GOLD PLATING  
SHELL: NICKEL PLATED

22AWG GREEN/YELLOW HOOK  
UP WITH #6 SPADE LUG



RECOMMENDED  
PANEL CUTOUT



MODEL NUMBER	LENGTH METERS [FEET]
UPMAAGND-03M	0.3 [.98]
UPMAAGND-05M	0.5 [1.64]
UPMAAGND-075M	0.75 [2.46]
UPMAAGND-1M	1.0 [3.28]
UPMAAGND-2M	2.0 [6.56]
UPMAAGND-3M	3.0 [9.84]

- NOTES:**
- CABLE ASSEMBLY SHALL HAVE 360° SHIELD TERMINATION.
  - CABLE ASSEMBLY SHALL BE TESTED FOR CONTINUITY.
  - MOUNTING HARDWARE INCLUDED: 2X #4-40 X .38 LG. PHILLIPS HD SCREW
  - CABLE ASSEMBLY SHALL BE INDIVIDUALLY PACKAGED IN ACCORDANCE WITH L-COM SPECIFICATION PS-0031.

**REGULATORY COMPLIANCE:**  
CE2011/65/EU(RoHS DIRECTIVE)

UNLESS OTHERWISE SPECIFIED, DIMENSIONS ARE IN INCHES [mm] OVERALL CABLE LENGTH TOLERANCE: ≤12 [305] = +1 [25] / -0 >12 [305] ≤60 [1524] = +2 [51] / -0 >60 [1524] ≤120 [3048] = +4 [102] / -0 >120 [3048] ≤300 [7620] = +6 [152] / -0 >300 [7620] = +5% / -0%	APPROVALS	DATE		45 BEECHWOOD DRIVE NORTH ANDOVER, MA 01845								
	DRAWN BY D.FRISIELLO	5/21/14		CATEGORY	USB							
ALL OTHER DIMENSIONAL TOLERANCES: .X = ±.2 [5.08] .XX = ±.02 [1.51] .XXX = ±.005 [1.3]	CHECKED BY S.SMITH	5/22/14		PRODUCT DESCRIPTION								
	APPROVED BY S.SMITH	5/22/14		CA USB-A M/A-PNL 6SP LUG								
PROJECTION	CONFIGURATION DETAILS OF UNDIMENSIONED FEATURES MAY VARY	COLOR VARIATIONS MAY OCCUR	<table border="1"> <tr> <td>SIZE</td> <td>FSCM NO.</td> <td>DWG. NO.</td> <td>REV.</td> </tr> <tr> <td><b>A</b></td> <td><b>43321</b></td> <td>UPMAAGND</td> <td><b>A</b></td> </tr> </table>	SIZE	FSCM NO.	DWG. NO.	REV.	<b>A</b>	<b>43321</b>	UPMAAGND	<b>A</b>	SHEET 1 OF 1
SIZE	FSCM NO.	DWG. NO.	REV.									
<b>A</b>	<b>43321</b>	UPMAAGND	<b>A</b>									