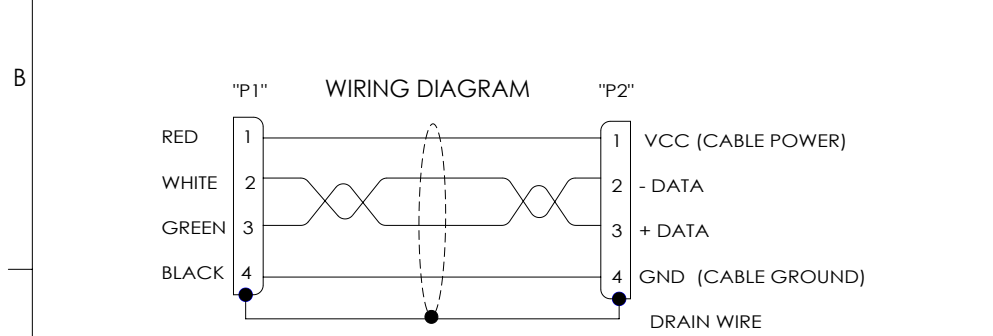
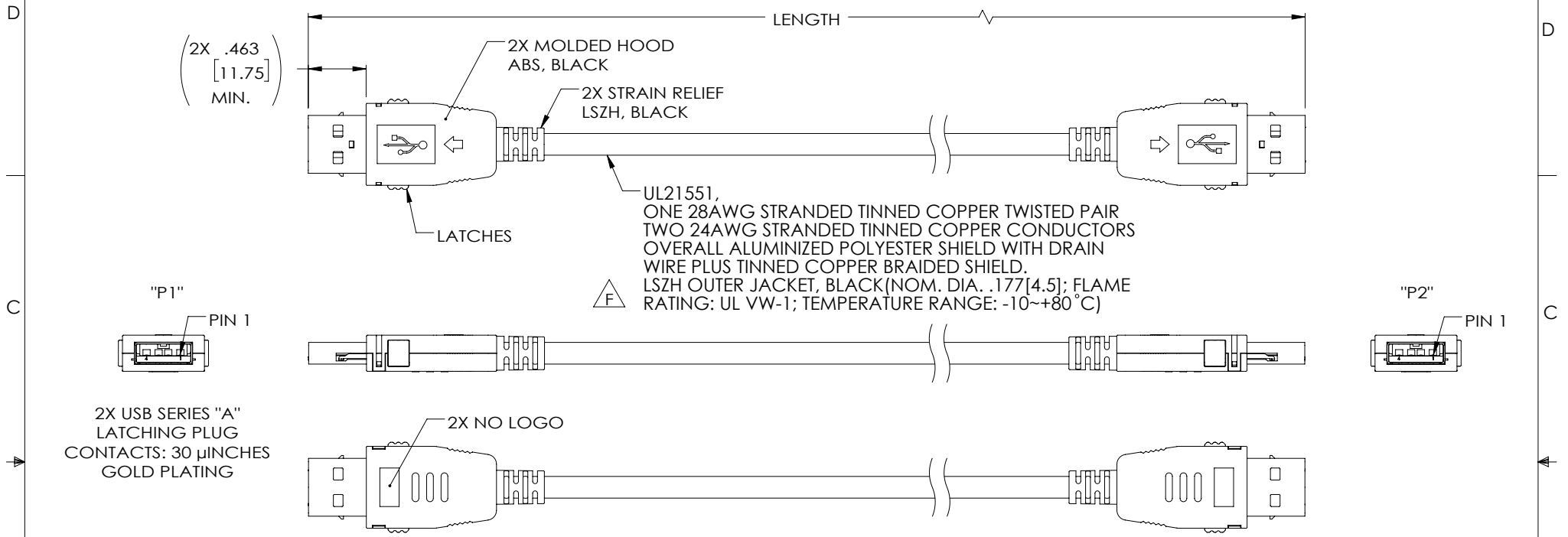


THE INFORMATION CONTAINED IN THIS DRAWING IS THE SOLE PROPERTY OF L-COM, INC. ANY REPRODUCTION IN PART OR WHOLE WITHOUT THE WRITTEN PERMISSION OF L-COM, INC. IS PROHIBITED.

REVISIONS			
REV	DESCRIPTION	DATE	APPROVED
E	ECN 7225: CHG'D SR FROM TPU TO LSZH, ROHS NOTE	1/8/14	D.FRISIELLO
F	ECN 10804: UPT CABLE; ADD CABLE OD, FLAME RATING, TEMP. RANGE&LSZH IEC STANDARDS	11/23/2020	MMARTINEZ



MODEL NUMBER	LENGTH METERS [FEET]
CAUZALAL-03M	0.3 [.98]
CAUZALAL-05M	0.5 [1.64]
CAUZALAL-075M	0.75 [2.46]
CAUZALAL-1M	1.0 [3.28]
CAUZALAL-2M	2.0 [6.56]
CAUZALAL-3M	3.0 [9.84]
CAUZALAL-4M	4.0 [13.12]
CAUZALAL-5M	5.0 [16.40]

- NOTES:**
1. CABLE ASSEMBLY SHALL HAVE 360° SHIELD TERMINATION.
 2. CABLE ASSEMBLY SHALL MEET USB 2.0 REQUIREMENTS.
 3. CABLE ASSEMBLY SHALL BE TESTED FOR CONTINUITY.
 4. CABLE ASSEMBLY SHALL BE INDIVIDUALLY PACKAGED IN ACCORDANCE WITH L-COM SPECIFICATION PS-0031.

LSZH CABLE CHARACTERISTICS:
 FLAME RATING: IEC 60332-1
 CORROSIVE GAS: IEC 60754
 SMOKE EMISSION: IEC 61034



UNLESS OTHERWISE SPECIFIED, DIMENSIONS ARE IN INCHES [mm] OVERALL CABLE LENGTH TOLERANCE: ≤12 [305] = +1 [25] / -0 >12 [305] ≤60 [1524] = +2 [51] / -0 >60 [1524] ≤120 [3048] = +4 [102] / -0 >120 [3048] ≤300 [7620] = +6 [152] / -0 >300 [7620] = +5% / -0 ALL OTHER DIMENSIONAL TOLERANCES: .X = ± .2 [5] FRACTIONS ± 1/32 .XX = ± .02 [.5] ANGLES ± 1° .XXX = ± .005 [.13]	APPROVALS DRAWN BY D. CASTRO CHECKED BY D. PARHAM APPROVED BY S. SMITH	DATE 11/3/10 12/9/10 12/9/10	50 High Street, West Mill, North Andover, MA 01845 USA. Phone: 1.800.341.5266 1.978.682.6936
	CONFIGURATION DETAILS OF UNDIMENSIONED FEATURES MAY VARY COLOR VARIATIONS MAY OCCUR	CATEGORY USB	
THIRD-ANGLE PROJECTION 	SIZE A	CAGE CODE 43321	DWG. NO. CAUZALAL
SCALE: NONE		CAD FILE: CAUZALAL.SLDDRW	SHEET 1 OF 1