

DRW NO.	C-928-4000-600		SH	1	REV	C	
ZONE	REV	ECN NUMBER	DESCRIPTION		BY	DATE	APPROVED
ALL	A	MHAN-9HHNBS.VER01	NEW RELEASE		HCL-JP	04/01/2014	M.HANRAHAN
	B	LCUN-9NZKRN.VER01	ADDED PLATING OPTION "K" TO TABLE 1		HCL-VR	09/23/2014	L.CURRAN
B1	C	HHUG-21020502	ADDED DIM (2.53) MAX & NOTE #10.		HCL-PB	02/25/2021	H.HUANG

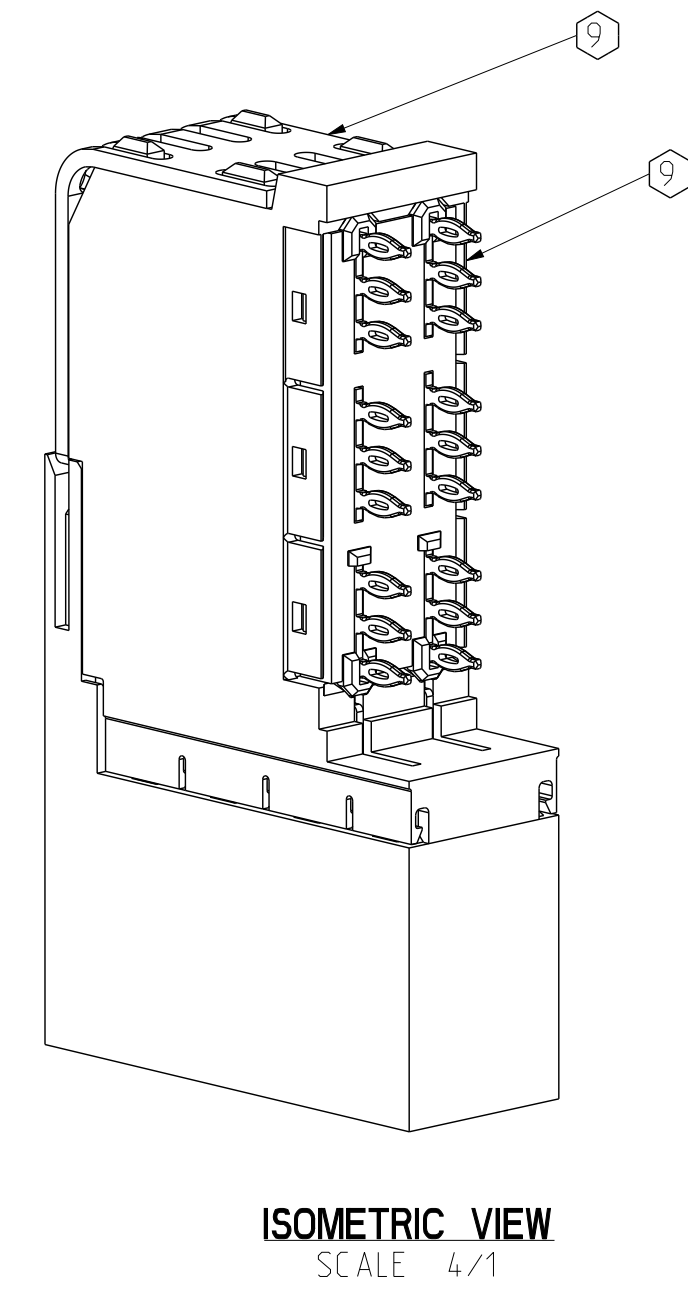
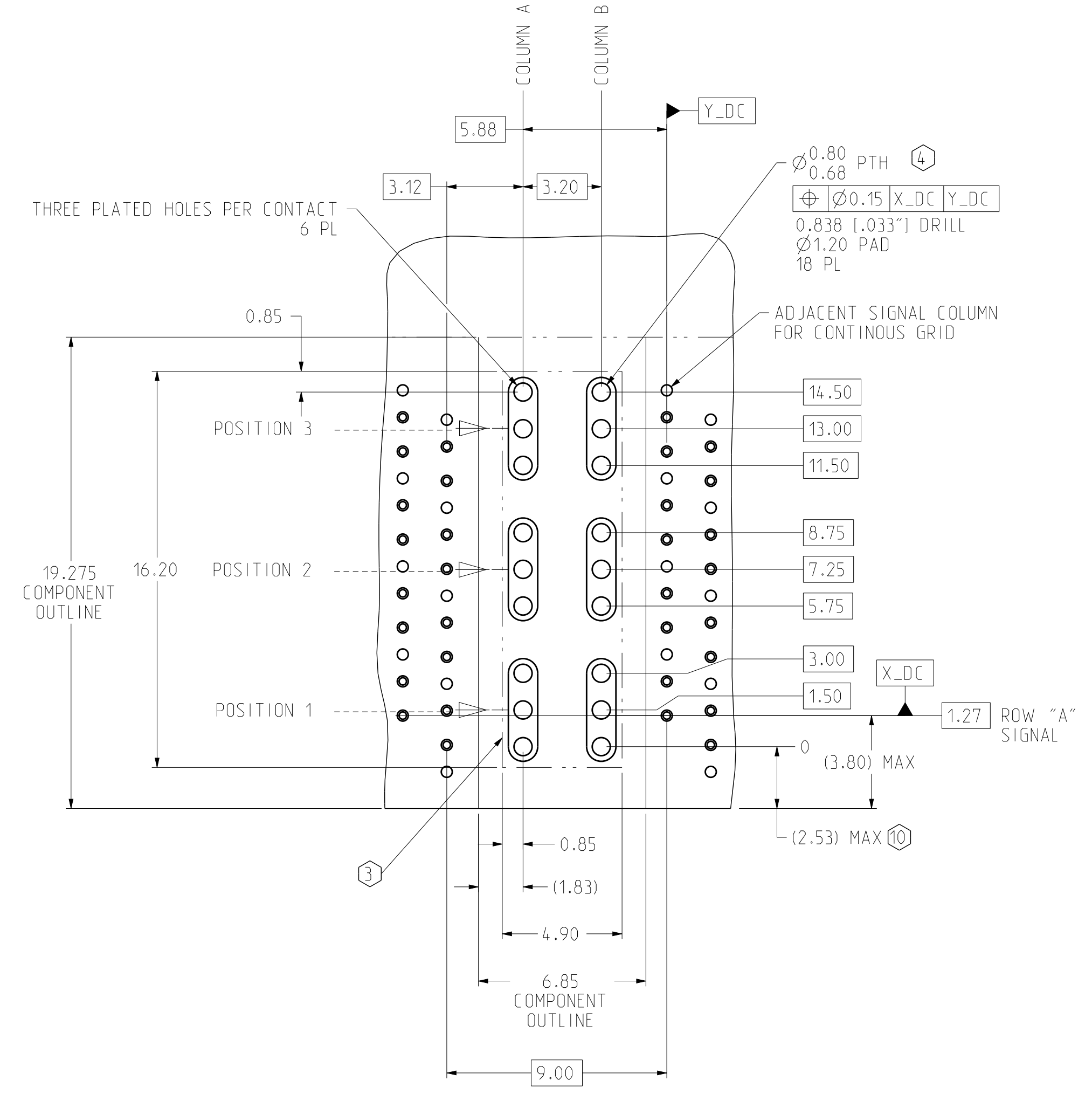
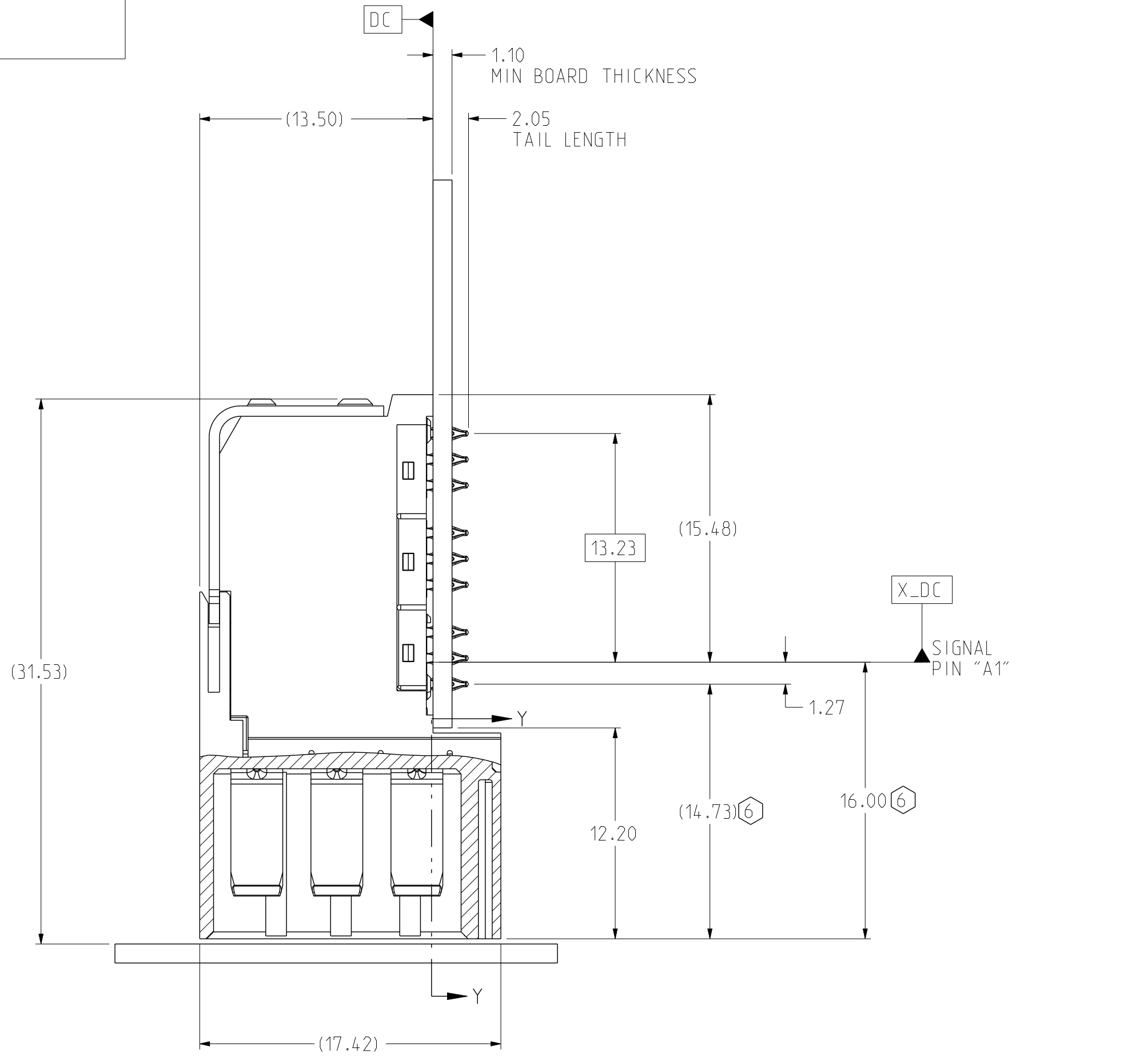
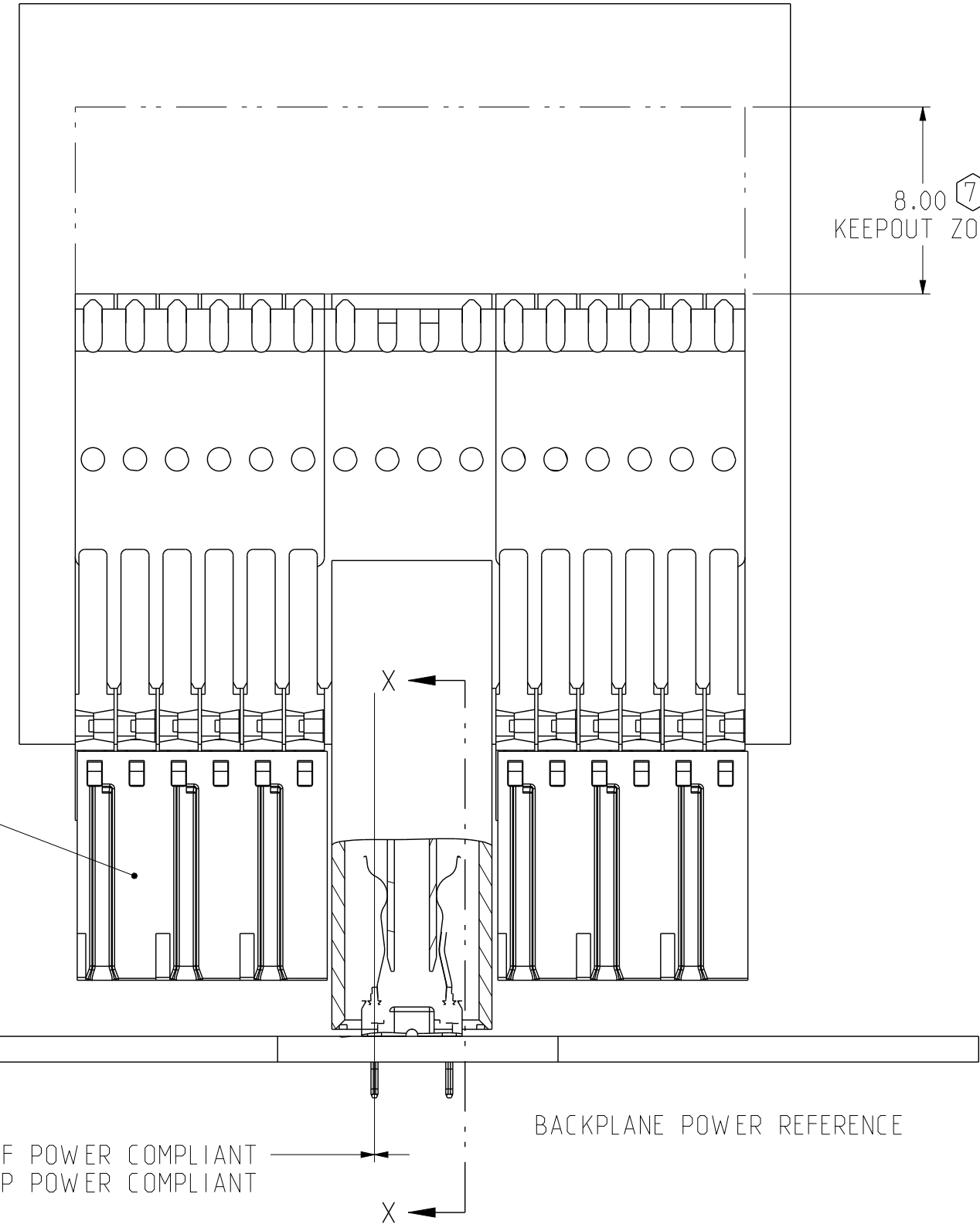
TABLE 1

XCede HD RIGHT ANGLE FEMALE POWER CONNECTOR
 Ⓢ ASSEMBLY PART NUMBER ASSIGNMENT

XCede HD POWER MODULE LEAD OFF
 4 = 4 PAIR

CONTACT LENGTH
 7 = 4.5mm
 8 = 5.5mm

PLATING:
 D = NI SULFAMATE, STANDARD GOLD, LEADFREE
 E = NI SULFAMATE, HIGH GOLD, LEADFREE
 H = NANO NI, STANDARD GOLD, LEADFREE
 J = NANO NI, HIGH GOLD, LEADFREE
 K = NI SULFAMATE, HIGH GOLD, LEADED, 60-40 TIN-LEAD



- NOTES:
- CORRESPONDING BP DRAWING : C-968-4100-500
 - USE 7.2mm NOMINAL FOR DAUGHTERCARD LAYOUT.
 - NO SURFACE TRACES ALLOWED IN KEEP-OUT ZONE.
 - STATED PAD SIZE MAY REQUIRE FILLING. SEE TB-2237 FOR ROUTING GUIDELINES.
 - REFER TO TB 2235 FOR XCede HD PRODUCT SPECIFICATION.
 - NOMINAL SEATED DIMENSION.
 - FOR CONNECTOR REPAIRABILITY, USE KEEP-OUT ZONE.
 - REFER DRAWING C-977-4000-600 FOR NON-STANDARD LOAD.
 - ORGANIZER AND STIFFENER SHOWN FOR REFERENCE ONLY.
 - IF THERE IS NO SIGNAL MODULE PRESENT IN THE CONFIGURATION, PLEASE USE THIS DIMENSION (2.53) MAX.

TOLERANCES	DESIGN 03/21/2014 M.HANRAHAN	Amphenol TCS A Division of Amphenol Corporation 200 Innovative Way, Nashua, NH 03062 603.879.3000	TITLE	RIGHT ANGLE FEMALE POWER ASSEMBLY XCede HD 4 PAIR, GEN 2 MINI COMPLIANT PIN			
0.0 ±0.25	DRAWN 03/21/2014 HCL-W.S		PART NO.	SEE PART NUMBER TREE			
0.00 ±0.13	CHK 03/21/2014 M.HANRAHAN		DRAWING NO.	C-928-4000-600			
0.000 ± -	APVD 03/21/2014 M.HANRAHAN		ASSEMBLY	ASSEM C928-4000-600 1.1 DRAWING C928-4000-600 A.3			
ANGLES ± 3°	UNLESS OTHERWISE SPECIFIED DIMENSIONS ARE IN MM. DECIMAL MARKER IS A PERIOD.	SIZE	D	SCALE	1/1	SHEET	1 OF 1

INTERPRET PER ASME Y14.5M
 CODE IDENT 31413

CUSTOMER USE
 DRAWING