

RCU-G-02.00-AMS-AM

RCU SERIES

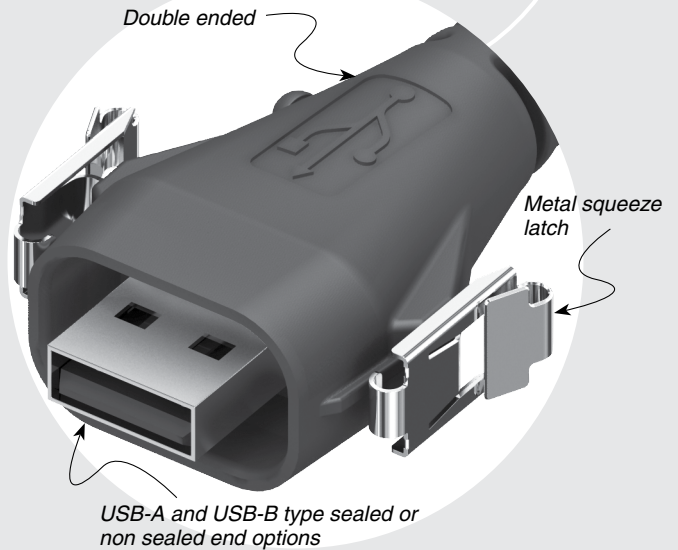
# IP68 SEALED USB CABLE PLUG

## SPECIFICATIONS

For complete specifications see [www.samtec.com?RCU](http://www.samtec.com?RCU)

- Insulator Material:** Glass Filled Thermoplastic
- Contact Material:** Phosphor Bronze
- Current Rating:** 4.2 A per pin (1 pin powered)
- Operating Temp Range:** -20 °C to +80 °C
- Shield Material:** Phosphor Bronze
- Wire:** 20 AWG (Power)  
25 AWG (Signal)  
28 AWG (Drain)

Mates with:  
RPCU, RPBU



## DUST CAPS

- AMS = DCA-RCU-01-01-A
- BMS = DCA-RCU-01-01-B

## ALSO AVAILABLE (MOQ Required)

- Other wire lengths
- End option 2 with -AMS, -BMS or -BM

RCU	PLATING	WIRE LENGTH	END 1 OPTION	END 2 OPTION
	-G = 30 μ" (0.76 μm) Gold on contact, Nickel on shell	-01.00 = (1 m) 40" Cable  -02.00 = (2 m) 79" Cable Standard lengths	-AMS = USB A Type, Sealed  -BMS = USB B Type, Sealed	-AM = USB A Type, Not Sealed  -BC = Blunt Cut

