

# VX Series

## Heat Sinks For TGHE Series and SOT-227 Devices



Ohmite introduces the VX series heat sinks for the Ohmite TGHE series and SOT-227 devices. This powerful heat sink has a unique profile that allows thru-hole soldering onto PCBs, panel mounting, or chassis mounting with fasteners. The VX series is an ideal heat sink that is designed for large power yet provides a light weight package and works with forced convection cooling.



### SERIES SPECIFICATIONS

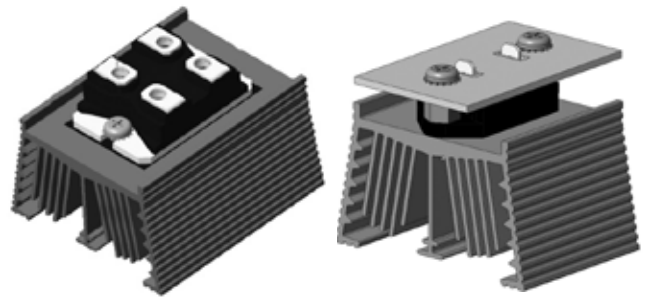
Heatsink Part Number	Compatible parts/devices	Surface Area (in <sup>2</sup> / mm <sup>2</sup> )	Weight (oz / g)	Length L (in. / mm)	Spacing S (in. / mm)	Thread
VXA-35-101E VXV-35-101E*	TGHE	38 / 24,638	1.4 / 39	1.38 / 35	1.10 / 28	M3
VXA-55-101E VXV-55-101E*	SOT-227	60 / 38,717	2.2 / 62	2.17 / 55	1.18 / 30	M3.5

\* Note: Anodized parts are standard; degreased available on request.

### CHARACTERISTICS

<b>Fastener</b>	M3.5 Screw
<b>Thermal Interface Material</b>	Use as needed. Ohmite TGH-TP1 for SOT-227 devices
<b>Material</b>	AL 6063-T5
<b>Surface Finish</b>	Black anodized or degreased
<b>Thermal Conductivity</b>	209 W/m-K

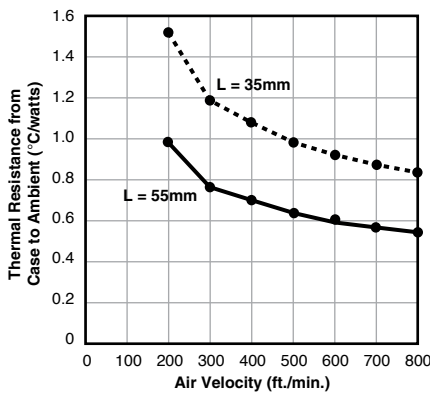
### PCB Mounting Examples



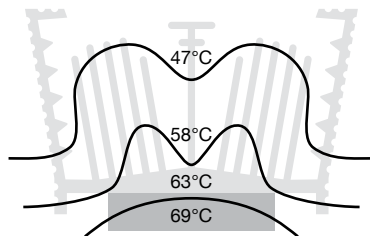
Heat sink assembly with a resistor and thermal interface material fastened with two M3.5 screws.

With Ohmite TGHE resistor

### Thermal Performance

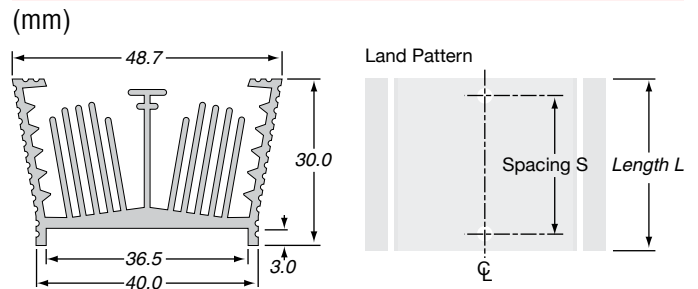


- Power dissipation is 100W, single device
- Heat load area 17 x 28mm metal tab
- Ducted air flow



Max. case temp. on SOT-227 (hot spot) is 69°C @ 5.08m/s (1000 fpm) ducted air flow.

### DIMENSIONS



### HOW TO ORDER

**V X V - 5 5 - 1 0 1 E**

Series: VX, Finish: A (anodized), V (degreased), Extrusion Length in mm: 55, Modifier: 101, RoHS Compliant: E