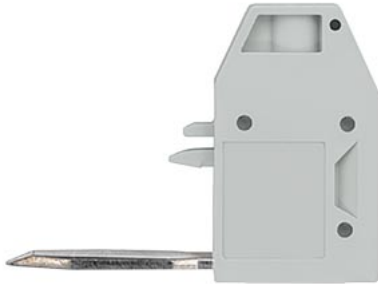


Tap-off terminal, 10 mm², for high-current term. with 50 mm², fully insul., to 1000 V, gray



Model	
product brand name	SETRON
product designation	Terminal blocks
design of the product	tap-off terminal
Appearance	
color	grey
Connections	
type of electrical connection	others
Mechanical Design	
fastening method	others
Net Weight	15 g
Approvals Certificates	
Environment	General Product Approval

[Environmental Confirmations](#)



[Confirmation](#)



other

[Confirmation](#)



Further information

- Information on the packaging
<https://support.industry.siemens.com/cs/ww/en/view/109813875>
- Information for data generation and storage
<https://support.industry.siemens.com/cs/ww/en/view/109995012>
- Information- and Downloadcenter (Catalogs, Brochures,...)
<https://www.siemens.com/lowvoltage/catalogs>
- Industry Mall (Online ordering system)
<https://mall.industry.siemens.com/mall/en/Catalog/product?mlfb=8WH9120-0AA00>
- Service&Support (Manuals, Certificates, Characteristics, FAQs,...)
<https://support.industry.siemens.com/cs/ww/en/ps/8WH9120-0AA00>
- Image database (product images, 2D dimension drawings, 3D models, device circuit diagrams, ...)
https://www.automation.siemens.com/bilddb/cax_en.aspx?mlfb=8WH9120-0AA00
- CAx-Online-Generator
<https://www.siemens.com/cax>
- Tender specifications

<https://www.siemens.com/specifications>

Characteristic curves

https://curves.simaris.siemens.com/curves/<mmp_prod_noCOMP='HAUPT'></mmp_prod_no>

last modified:

5/9/2025 

