



ALPHA lock insert for profile semicylinder, necessary for installation of a 40 mm profile semicylinder in floor-mounted distribution board, suitable for 8GK9561-0KK01

Model	
product brand name	ALPHA
product designation	Lock insert
design of the product	For profile semicylinder
material	steel

Mechanical Design	
Net Weight	35.5 g

Approvals Certificates			
Environment	General Product Approval	Test Certificates	other

[Environmental Confirmations](#)

[Environmental Confirmations](#)



[Confirmation](#)

[Special Test Certificate](#)

[Confirmation](#)

other

[Miscellaneous](#)



Further information

Information on the packaging

<https://support.industry.siemens.com/cs/ww/en/view/109813875>

Information for data generation and storage

<https://support.industry.siemens.com/cs/ww/en/view/109995012>

Information- and Downloadcenter (Catalogs, Brochures,...)

<https://www.siemens.com/lowvoltage/catalogs>

Industry Mall (Online ordering system)

<https://mall.industry.siemens.com/mall/en/en/Catalog/product?mlfb=8GK9561-0KK02>

Service&Support (Manuals, Certificates, Characteristics, FAQs,...)

<https://support.industry.siemens.com/cs/ww/en/ps/8GK9561-0KK02>

Image database (product images, 2D dimension drawings, 3D models, device circuit diagrams, ...)

https://www.automation.siemens.com/bilddb/cax_en.aspx?mlfb=8GK9561-0KK02

CAx-Online-Generator

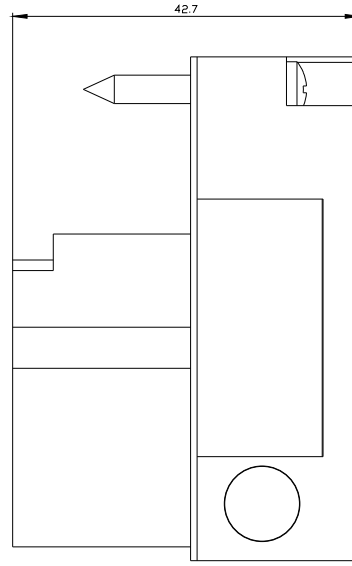
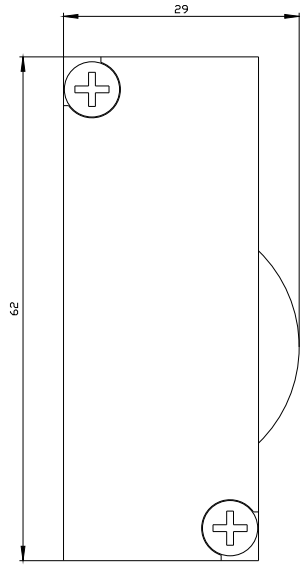
<https://www.siemens.com/cax>

Tender specifications

<https://www.siemens.com/specifications>

Characteristic curves

[https://curves.simaris.siemens.com/curves/<mmp_prod_noCOMP="HAUPT"></mmp_prod_no>](https://curves.simaris.siemens.com/curves/<mmp_prod_noCOMP=)



last modified:

8/22/2025 

