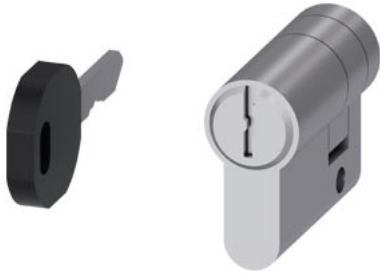


ALPHA 40 mm profile semicylinder with E012 lock and 2x keys for wall-mounted distribution board suitable for 8GK9560-0KK06



Model	
product brand name	ALPHA
product designation	Profile semicylinder
design of the product	With E012 lock and key
material	steel

Mechanical Design	
Net Weight	92 g

Approvals Certificates			
Environment	General Product Approval	Test Certificates	other

[Environmental Con-  
firmations](#)

[Environmental Con-  
firmations](#)



[Confirmation](#)

[Special Test Certifi-  
cate](#)

[Confirmation](#)

### other

[Miscellaneous](#)



### Further information

#### Information on the packaging

<https://support.industry.siemens.com/cs/ww/en/view/109813875>

#### Information for data generation and storage

<https://support.industry.siemens.com/cs/ww/en/view/109995012>

#### Information- and Downloadcenter (Catalogs, Brochures,...)

<https://www.siemens.com/lowvoltage/catalogs>

#### Industry Mall (Online ordering system)

<https://mall.industry.siemens.com/mall/en/en/Catalog/product?mlfb=8GK9560-0KK07>

#### Service&Support (Manuals, Certificates, Characteristics, FAQs,...)

<https://support.industry.siemens.com/cs/ww/en/ps/8GK9560-0KK07>

#### Image database (product images, 2D dimension drawings, 3D models, device circuit diagrams, ...)

[https://www.automation.siemens.com/bilddb/cax\\_en.aspx?mlfb=8GK9560-0KK07](https://www.automation.siemens.com/bilddb/cax_en.aspx?mlfb=8GK9560-0KK07)

#### CAx-Online-Generator

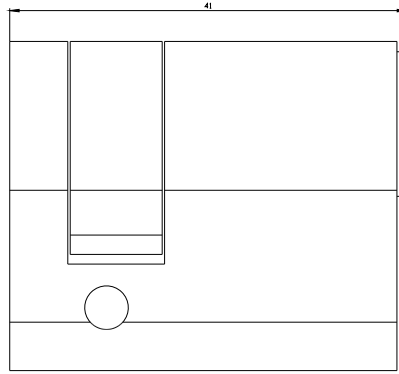
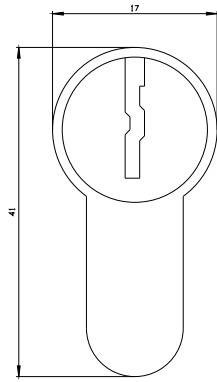
<https://www.siemens.com/cax>

#### Tender specifications

<https://www.siemens.com/specifications>

#### Characteristic curves

[https://curves.simaris.siemens.com/curves/<mmp\\_prod\\_noCOMP="HAUPT"></mmp\\_prod\\_no>](https://curves.simaris.siemens.com/curves/<mmp_prod_noCOMP=)



---

last modified:

8/22/2025 

