

Pin busbar touch-safe, 10 mm² 3-phase+AUX, 1016 mm long can be cut, without end caps



Figure similar

product brand name	SENTRON
product designation	Pin busbar
design of the product	16x (3PH+HS)
design of the phase tap	L1/L2/L3
General technical data	
compatibility	for MCBs 3P
design of pole	3 poles
phase number	3
operational current rated value	63 A
suitability for interaction devices with auxiliary switch	Yes
suitability for interaction devices with N conductor	No
color	light grey
Product details	
product component with end cap	No
product feature attachable arc fault detection device	No
product feature insulated	Yes
product function	
• suitable for compact devices	No
• can be cut	Yes
number of devices suitable for fitting	16
type of electrical connection	Pin
Mechanical Design	
module width	18 mm
height	15 mm
width	18 mm
length	1 016 mm
number of modular width units	56
cross-section	10 mm ²
angle of the pin of busbar	0°
Net Weight	421 g
Approvals Certificates	
Environment	General Product Approval

[Environmental Con-
firmations](#)

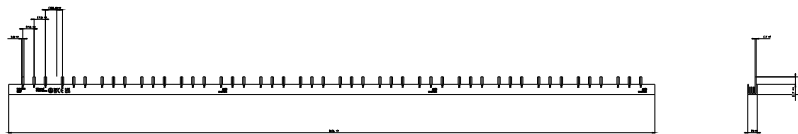
[Environmental Con-
firmations](#)

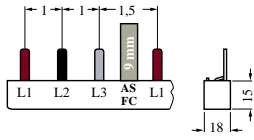


[Miscellaneous](#)



[Confirmation](#)

[Confirmation](#)[Miscellaneous](#)**Further information****Information on the packaging**<https://support.industry.siemens.com/cs/ww/en/view/109813875>**Information for data generation and storage**<https://support.industry.siemens.com/cs/ww/en/view/109995012>**Information- and Downloadcenter (Catalogs, Brochures,...)**<https://www.siemens.com/lowvoltage/catalogs>**Industry Mall (Online ordering system)**<https://mall.industry.siemens.com/mall/en/en/Catalog/product?mlfb=5ST3742>**Service&Support (Manuals, Certificates, Characteristics, FAQs,...)**<https://support.industry.siemens.com/cs/ww/en/ps/5ST3742>**Image database (product images, 2D dimension drawings, 3D models, device circuit diagrams, ...)**https://www.automation.siemens.com/bilddb/cax_en.aspx?mlfb=5ST3742**CAX-Online-Generator**<https://www.siemens.com/cax>**Tender specifications**<https://www.siemens.com/specifications>**Characteristic curves**[https://curves.simarisiemens.com/curves/<mmp_prod_noCOMP="HAUPT"></mmp_prod_no>](https://curves.simarisiemens.com/curves/<mmp_prod_noCOMP=)



last modified:

8/8/2025 

