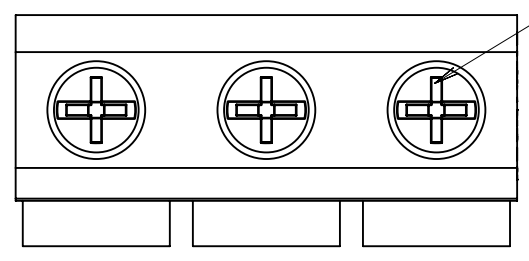
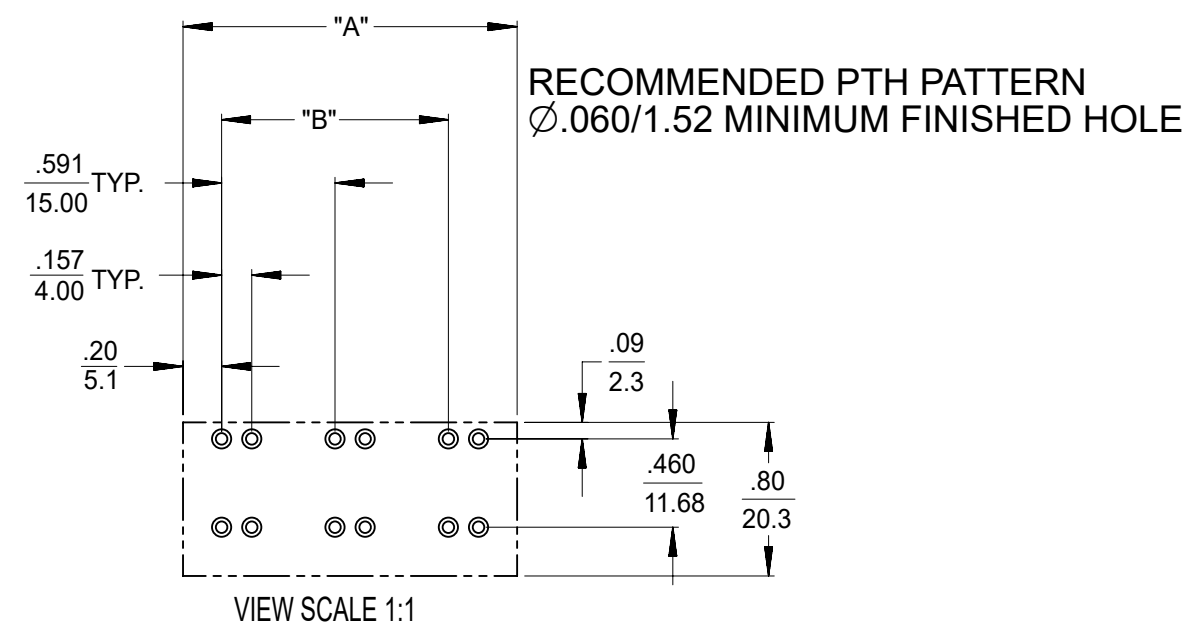
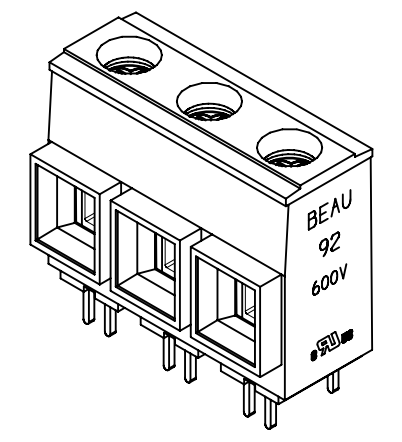


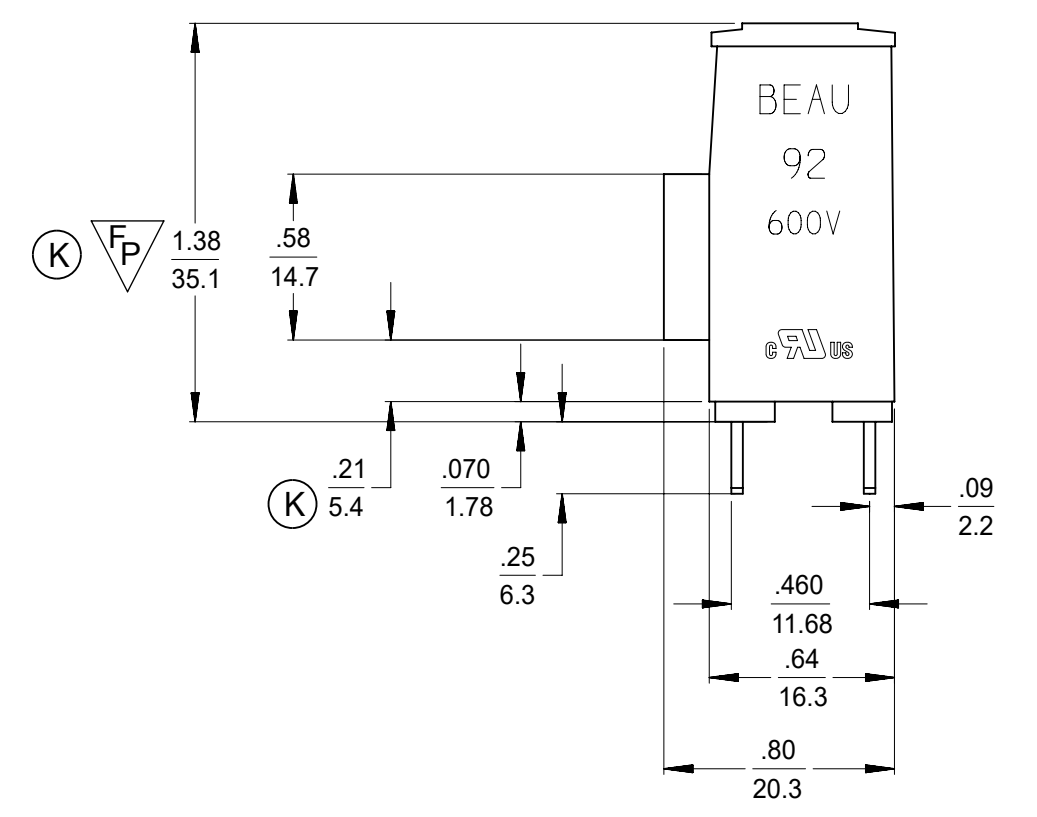
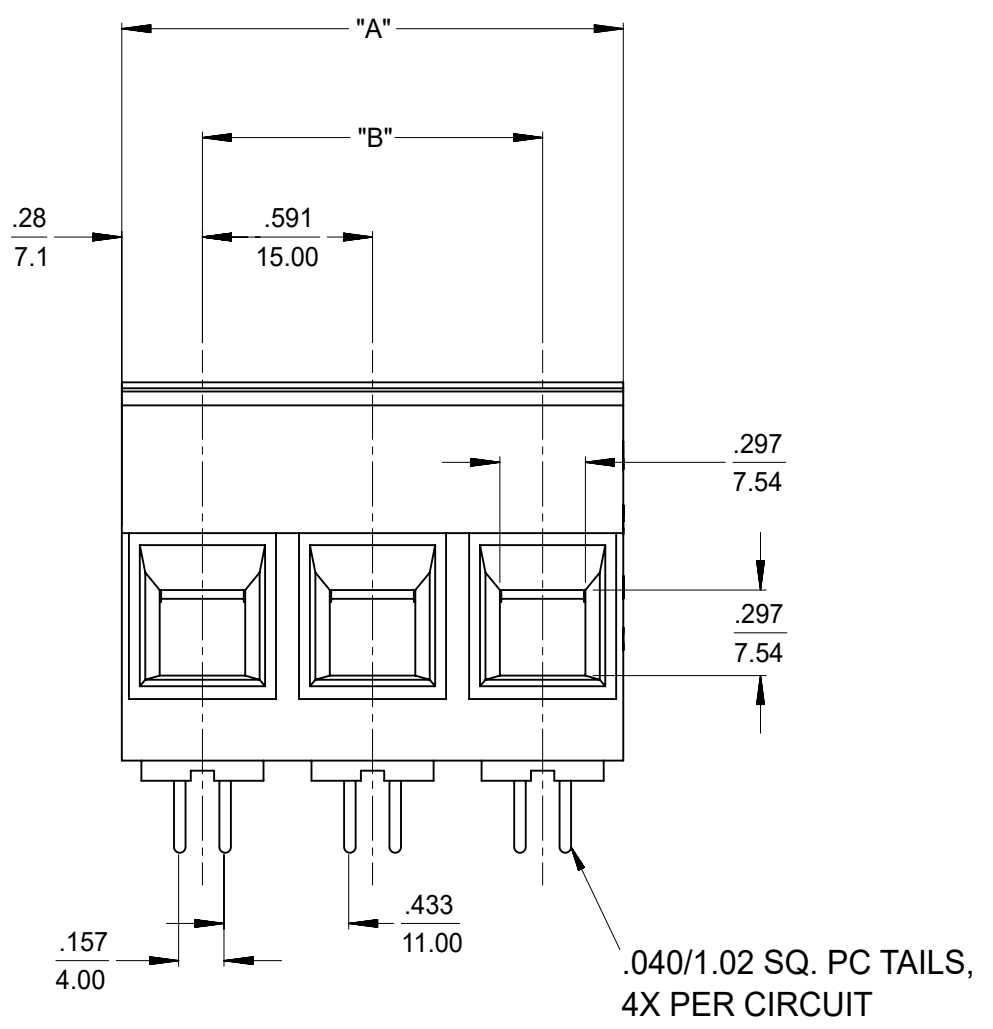
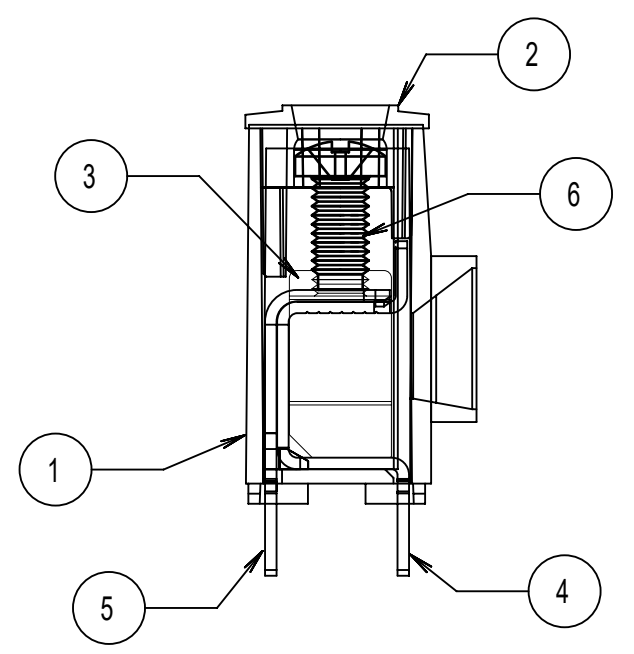
MATERIAL NO-56 OPTION	ENGINEERING NUMBER	NUMBER OF CIRCUITS	DIM "A" .010/.13	DIM "B"
399200502	920502-56	2	1.150/29.21	.591/15.91
399200503	920503-56	3	1.740/44.20	1.181/30.00
399200504	920504-56	4	2.330/59.18	1.772/45.01
399200505	920505-56	5	2.920/74.17	2.362/59.99
399200508	920508-56	8	4.690/119.13	4.134/105.00
399200510	920510-56	10	5.870/149.10	5.315/135.00
399200511	920511-56	11	6.470/164.43	5.906/150.01
399200512	920512-56	12	7.060/179.32	6.496/165.00



M5 COMBO HEAD SCREW, .25/6.25 BLADE, #2 POZI



ACTUAL SIZE



- NOTES:
- DESIGNED TO MEET NEC & UL 1059 CLASS C 600 VOLTS
  - "XX" REFERS TO THE NUMBER OF CIRCUIT POSITIONS.
  - ROHS COMPLIANT BY EXEMPTION. \*

ITEM	QTY.	DESCRIPTION	MATERIAL	FINISH
6	XX	SCREW, M5, #2 POZI-SLOT, ST. STEEL	S.S.	TIN
5	XX	TERMINAL	COPPER	TIN
4	XX	TERMINAL	COPPER	TIN
3	XX	CAGE *	BRASS	NICKEL
2	1	COVER	THERMOPLASTIC	BLACK
1	1	BODY	THERMOPLASTIC	BLACK

THIS DRAWING CONTAINS INFORMATION THAT IS PROPRIETARY TO MOLEX ELECTRONIC TECHNOLOGIES, LLC AND SHOULD NOT BE USED WITHOUT WRITTEN PERMISSION

DIMENSION UNITS	SCALE	CURRENT REV DESC: REMOVED OBSOLETE PART NUMBERS AS PER PCN#515979	<b>molex</b>		
IN/MM	4:1				
GENERAL TOLERANCES (UNLESS SPECIFIED)		EC NO: 823502	SR, BTS, #3AWG 85A, 600V		
4 PLACES	± 0.0002	DRWN: MADHAM5	2025/05/02	PRODUCT CUSTOMER DRAWING	
3 PLACES	± 0.003 ± 0.005	CHK'D: GGA	2025/07/02	DOCUMENT NUMBER	
2 PLACES	± 0.13 ± 0.01	APPR: GGA	2025/07/02	SD-39920-005	DOC TYPE DOC PART REVISION
1 PLACE	± 0.3 ± 0.1	INITIAL REVISION:		PSD	001 K1
0 PLACES	±	DRWN: GHR	00/02/03	SEE TABLE	CUSTOMER
ANGULAR TOL	± 0.5 °	APPR: LROTHAUS	01/05/10	GENERAL MARKET	SHEET NUMBER
DRAFT WHERE APPLICABLE MUST REMAIN WITHIN DIMENSIONS	THIRD ANGLE PROJECTION	DRAWING	SERIES	MATERIAL NUMBER	CUSTOMER
		C-SIZE	39920	SEE TABLE	GENERAL MARKET
					1 OF 1