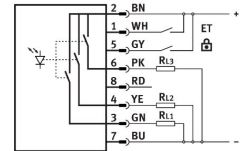


Color sensor SOEC-RT-Q50-PS-S-7L

Part number: 538236



[PDF General operating condition](#)

Data sheet

Feature	Value
Design	Block design
Conforms to standard	EN 60947-5-2
Symbol	00991617
Certification	RCM compliance mark c UL us - Listed (OL)
CE marking (see declaration of conformity)	As per EU EMC directive As per EU RoHS directive
UKCA marking (see declaration of conformity)	To UK RoHS instructions
Note on materials	RoHS compliant
Measured variable	Position
Measuring principle	Optoelectronic
Method of measurement	Color sensor
Type of light	White
Max. light spot	Ø 4 mm for scanning width 22 mm
Working range	12 mm ... 32 mm
Ambient temperature	-10 °C ... 55 °C
Switching output	PNP
Switching element function	Light switching
Max. switching frequency	500 Hz
Max. output current	100 mA
Voltage drop	≤2.4 V
Short-circuit protection	Pulsed
DC operating voltage range	10 V ... 30 V
Residual ripple	10%
Idle current	40 mA
Reverse polarity protection	for all electrical connections
Electrical connection	M12x1 Plug
Size	50x50x17 mm
Type of mounting	With through-hole
Product weight	38 g
Housing material	ABS
Ready status indication	Green LED
Switching status indication	LED
Setting options	Teach-in Teach-in via electrical connection

Feature	Value
Setting range, lower limit	12 mm
Setting range, upper limit	32 mm
Ambient temperature with flexible cable installation	-5 °C ... 55 °C
Degree of protection	IP67
Corrosion resistance class (CRC)	4 - Particularly high corrosion stress
LABS (PWIS) conformity	VDMA24364-B2-L