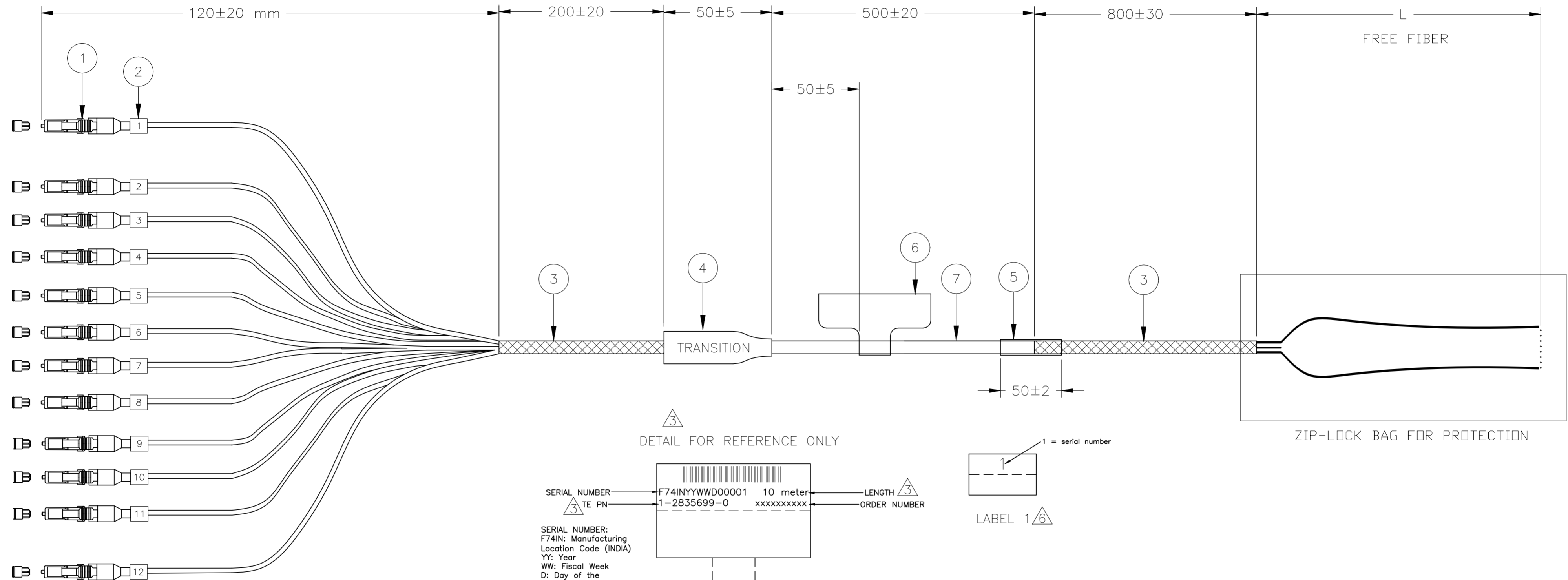


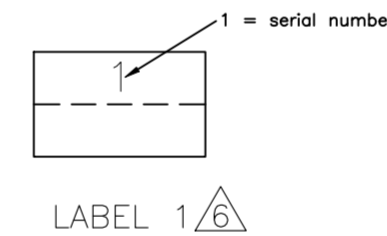
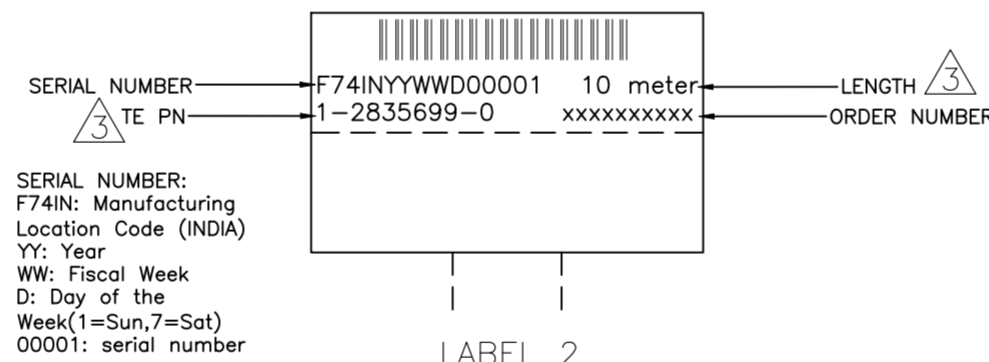
REVISIONS					
P	LTR	DESCRIPTION	DATE	DWN	APVD
A		ECR-21-000134	06JAN2021	SS	RS

END A

END B



DETAIL FOR REFERENCE ONLY



NOTES:

- 1 MAX. CONNECTOR ATTENUATION 0.3dB, MEASURED AT 1310 nm AND 1550 nm ACCORDING TO IEC 61300-3-4 INSERTION METHOD B
- 2 MIN. RETURN LOSS 50 dB, IN MATED CONDITION AGAINST REFERENCE CONNECTOR AT 1310 nm AND 1550 nm
- 3 INFORMATION ON LABEL, SEE DETAIL FOR EXAMPLE.
- 4 CABLE INFORMATION:
 - CORE DIAMETER: 9/125um
 - OUTER JACKET DIAMETER: Ø6.8MM
 - OUTER JACKET COLOUR: BLACK
 - OUTER JACKET MATERIAL: LSZH
 - CABLE ATTENUATION:0.4dB/km @1310 nm OR 0.3dB/km @1550 nm
 - UL1666 & CPR: Dca-s2,d1,a1 COMPLIANCE

- 5 THE TRANSITION DEVICE MEETS IP67
- 6 LABEL-1 MARKING AS PER COLOR CODE TABLE IN SHEET-2

Qty	Description	Item
L	Ø6.8MM FO CABLE 12FIBER, SINGLE MODE G657A2, LSZH, BLACK	7
1	MARKER LABEL 2	6
1	HEAT SHRINK TUBE	5
1	CABLE BRANCHING DEVICE, 12C BUFFER	4
L	SPIRAL WRAP	3
12	MARKER LABEL 1	2
12	LC SIMPLEX CONNECTOR, SINGLE MODE, BLUE	1

THIS DRAWING IS A CONTROLLED DOCUMENT.		DWN 23NOV2020 SIDDHARTH SINGH		TE Connectivity																			
DIMENSIONS: mm		CHK 23NOV2020 HERBERT ZHANG		NAME																			
TOLERANCES UNLESS OTHERWISE SPECIFIED:		APVD 23NOV2020 ROGER SONG		PRODUCT SPEC																			
<table border="1"> <tr><td>0 PLC</td><td>±</td><td>-</td></tr> <tr><td>1 PLC</td><td>±</td><td>-</td></tr> <tr><td>2 PLC</td><td>±</td><td>-</td></tr> <tr><td>3 PLC</td><td>±</td><td>-</td></tr> <tr><td>4 PLC</td><td>±</td><td>-</td></tr> <tr><td>ANGLES</td><td>±</td><td>-</td></tr> </table>		0 PLC		±	-	1 PLC	±	-	2 PLC	±	-	3 PLC	±	-	4 PLC	±	-	ANGLES	±	-	APPLICATION SPEC	FOSM 12F LC DUPLEX - Pigtail	
0 PLC	±	-																					
1 PLC	±	-																					
2 PLC	±	-																					
3 PLC	±	-																					
4 PLC	±	-																					
ANGLES	±	-																					
MATERIAL	FINISH	WEIGHT	SIZE	CAGE CODE	DRAWING NO	RESTRICTED TO																	
-	-	-	A2	00779	C=2835699	-																	
CUSTOMER DRAWING			SCALE	SHEET	REV																		
			1:1	1 of 2	A																		

REVISIONS

P	LTR	DESCRIPTION	DATE	DWN	APVD
-	-	SEE SHEET 1	-	-	-


△ COLOUR CODE TABLE.

LC CON, LABEL	1	2	3	4	5	6	7	8	9	10	11	12
FIBER	BLUE	ORANGE	GREEN	BROWN	GREY	WHITE	RED	BLACK	YELLOW	VIOLET	PINK	AQUA

LENGTH "L" IN MM	TOLERANCE
L ≤ 50000	±1%
L > 50000	±1%

PART NUMBER △3	DESCRIPTION	△3 LENGTH (Meters)	REMARKS
1-2835699-0	FOSM 6F LC SIMPLEX-PIGTAIL,10m	10±0.10	
2-2835699-0	FOSM 6F LC SIMPLEX-PIGTAIL,20m	20±0.20	
3-2835699-0	FOSM 6F LC SIMPLEX-PIGTAIL,30m	30±0.30	
5-2835699-0	FOSM 6F LC SIMPLEX-PIGTAIL,50m	50±0.50	
7-2835699-0	FOSM 6F LC SIMPLEX-PIGTAIL,70m	70±0.70	
9-2835699-9	FOSM 6F LC SIMPLEX-PIGTAIL,100m	100±1.0	
9-2835699-8	FOSM 6F LC SIMPLEX-PIGTAIL,150m	150±1.5	
9-2835699-6	FOSM 6F LC SIMPLEX-PIGTAIL,250m	250±2.5	

2835699

THIS DRAWING IS A CONTROLLED DOCUMENT.		DWN SIDDHARTH SINGH 23NOV2020	 TE Connectivity	
DIMENSIONS: mm		CHK HERBERT ZHANG 23NOV2020		
TOLERANCES UNLESS OTHERWISE SPECIFIED:		APVD ROGER SONG 23NOV2020	NAME FOSM 12F FULLAXS LC - Pigtail	
0 PLC ± - 1 PLC ± - 2 PLC ± - 3 PLC ± - 4 PLC ± - ANGLES ± -		PRODUCT SPEC -	RESTRICTED TO -	
MATERIAL -		FINISH -	WEIGHT -	SIZE A2
		CAGE CODE 00779	DRAWING NO C=2835699	SCALE 1:1
		CUSTOMER DRAWING		SHEET 2 of 2
				REV A