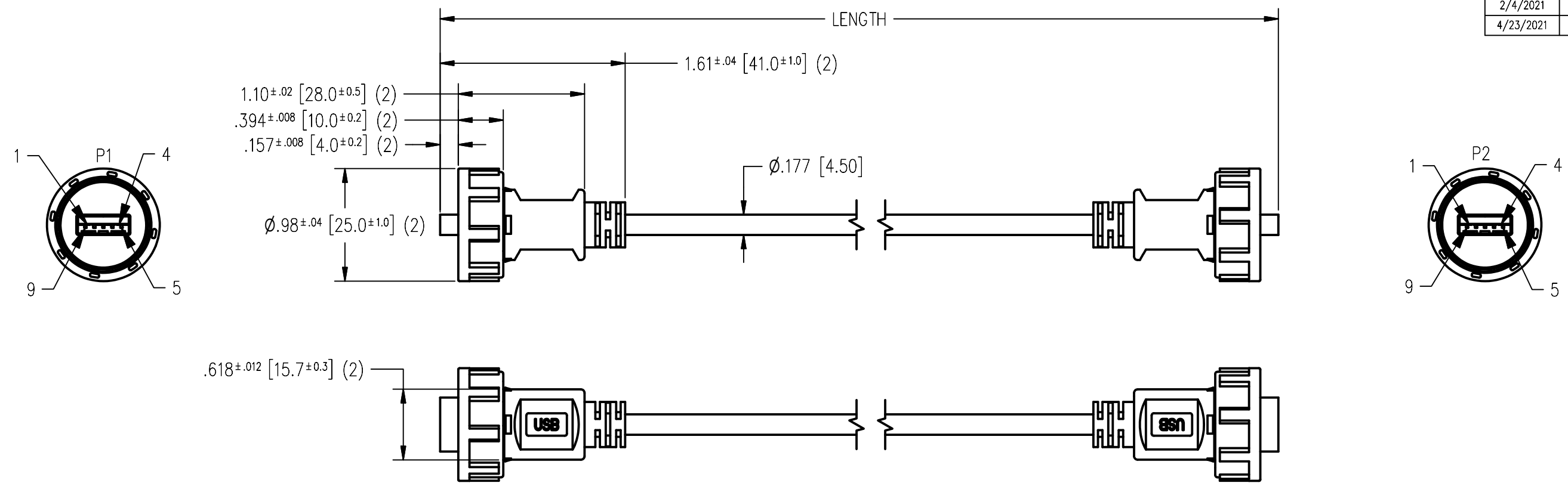


DATE	REV	ECN	APP'D BY
2/4/2021	A0		JE
4/23/2021	A1	11739	GL



- NOTES:
- PACKAGING:
 - EACH CABLE ASSEMBLY TO BE INDIVIDUALLY BAGGED
 - TESTING:
 - 100% TESTED FOR OPEN/SHORTS/MISS WIRING
 - INSULATION RESISTANCE 10MΩ MIN/300V DC/0.01
 - CONDUCTOR RESISTANCE 3.0Ω MAX
 - MATERIAL:
 - CABLE: USB 3.0 A/F UL2725 1P+(30AWG*1P+D+AL)*2+26AWG*2C+AL+B, PVC COVER, COLOR BLACK.
 - USB 3.0 A/M:
 - INSULATOR: PPT UL 94V-0, COLOR BLUE
 - METAL SHELL: COPPER ALLOY, NI PLATING
 - CONTACTS: COPPER ALLOY Au FLASH ON CONTACT AREA OVER NI
 - OVERMOLD : PVC UL 94V-0 COLOR BLACK
 - INTERFACIAL SEAL: SILICONE, COLOR WHITE
 - COUPLING RING: PA66 UL94V-0 COLOR BLACK
 - SPECIFICATIONS:
 - WIRE SPEIFICATION 26/30 AWG
 - NUMBER OF CONTACTS: 9
 - TEMPERATURE RANGE -40~C~ 80~C
 - FLAMMABILIIY RATING: UL94-V0
 - PROTECTION LEVEL: IP67
 - WITHSTANDING VOLTAGE: 1000V/1 MIN
 - CURRENT RATING: 1.5A
 - CONTACT RESISTANCE: ≤ 30MΩ
 - NSULATION RESISTANCE: 100MΩ DC500V

PART NUMBER STRUCTURE

67U3AA-xxx-K

- FAMILY**
67=IP67
- CONNECTOR TYPE**
U=USB
- CATEGORY**
3=3.0
- P 2**
A= USB IP67 MALE
- P 1**
A= USB IP67 MALE
- LENGTH**
006=6 FEET ±2.4"
010=10 FEET ±3.5"
015=15 FEET ±3.5"
- COLOR**
K=BLACK

WIRE DIAGRAM		
P1	WIRE COLOR	P2
1	RED	1
2	WHITE	2
3	GREEN	3
4	BLACK	4
5	BLUE	5
6	YELLOW	6
7	GND	7
8	VIOLET	8
9	ORANGE	9
10	SHIELD BRAID	10

<p>THIRD ANGLE PROJECTION</p>	<p>1118 Susquehanna Trail South Glen Rock, PA 17327-9199 (717) 235-7512 http://www.stewartconnector.com</p>						
<p>DO NOT SCALE DRAWING DRAWING IS SUBJECT TO CHANGE WITHOUT NOTICE</p>	<p>TITLE: USB 3.0 TYPE A (CIRCULAR COUPLING) TO USB 3.0 TYPE A (CIRCULAR COUPLAR)</p>						
<p>DIMENSIONS: INCHES [METRIC] UNLESS OTHERWISE SPECIFIED TOLERANCES ARE ±.005 [0.13] ANGLES ARE ± 1°</p>	<p>THIS DRAWING AND THE SUBJECT MATTER SHOWN THEREON ARE CONFIDENTIAL AND THE PROPRIETARY PROPERTY OF STEWART CONNECTOR AND SHALL NOT BE REPRODUCED, COPIED, OR USED IN ANY MANNER WITHOUT PRIOR WRITTEN CONSENT OF STEWART CONNECTOR. ONE OR MORE U.S. PATENTS MAY APPLY TO THIS PRODUCT. FOR DETAILS, PLEASE VISIT: HTTP://BELFUSE.COM/STEWART/STEWART_PATENTS/</p>						
<p>SHEET NO. 1 OF 1</p>	<table border="1"> <tr> <td>DRN BY: G. LUCAS</td> <td>DATE: 1/25/2021</td> </tr> <tr> <td>APPD BY: JE</td> <td>DATE: 2/4/2021</td> </tr> <tr> <td>DWG NO: CT999248</td> <td>REV: A1</td> </tr> </table>	DRN BY: G. LUCAS	DATE: 1/25/2021	APPD BY: JE	DATE: 2/4/2021	DWG NO: CT999248	REV: A1
DRN BY: G. LUCAS	DATE: 1/25/2021						
APPD BY: JE	DATE: 2/4/2021						
DWG NO: CT999248	REV: A1						



CT Plug