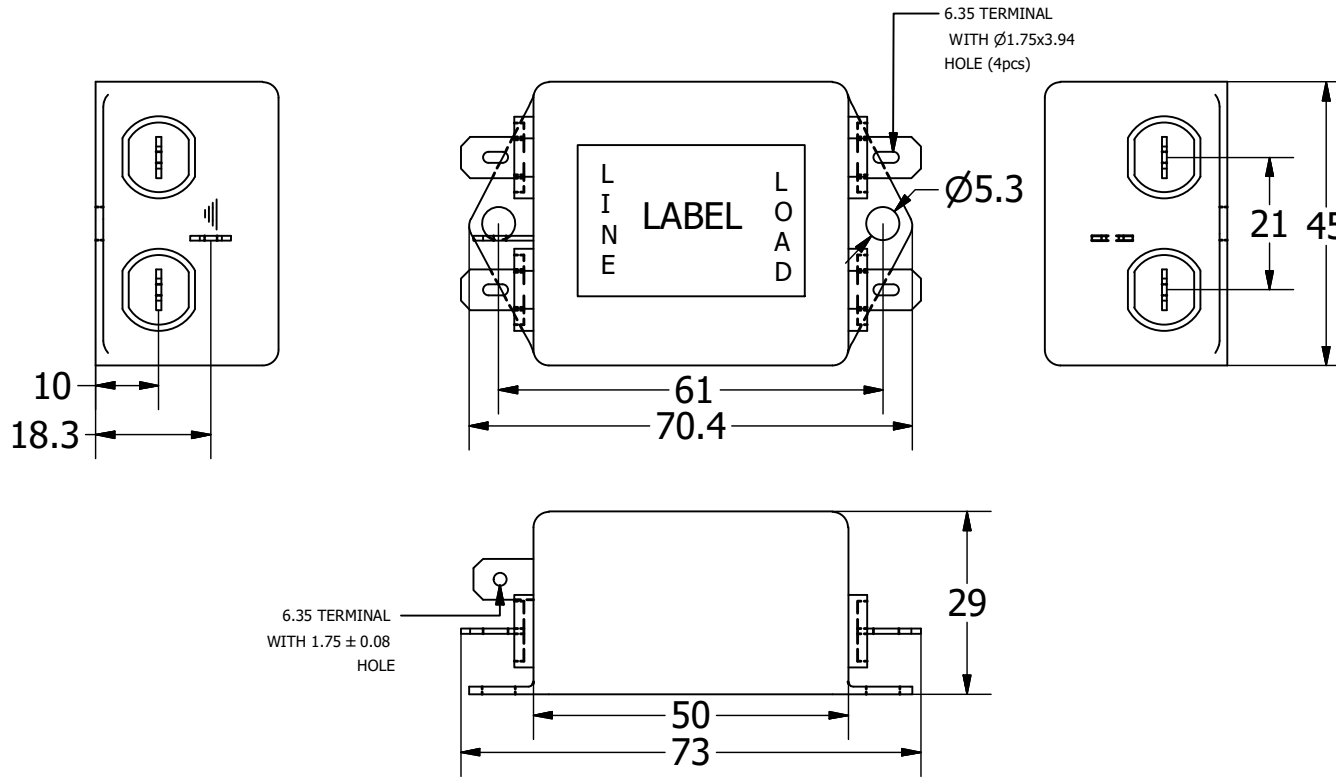


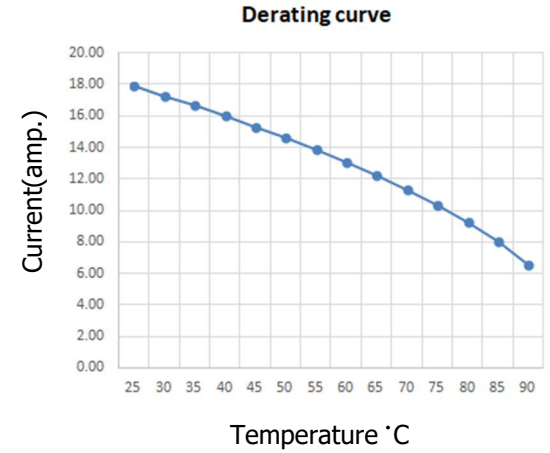
This DWG. is a sole property of ARROW POWER COMPONENTS PVT. LTD. unauthorised use of this DWG. or making product as per DWG. without our permission or any misuse is not permitted.

## Mechanical Details



## NOTES: UNLESS OTHERWISE SPECIFIED

1	TOLERANCE TO BE $\pm 1.0$ mm.
2	ALL DIMENSIONS ARE IN MM
3	



## PRODUCT LABEL

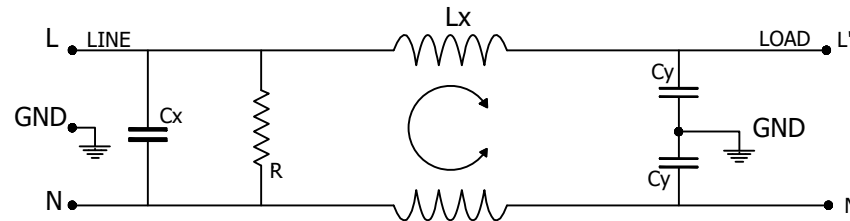
**EMC EMV FILTER**

EN2010-16-F  
120/250 VAC, 50/60 Hz  
16A@40°C  
25/100/21

LINE
LOAD

## SPECIFICATION

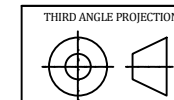
- 1) RATED VOLTAGE (MAX):  
16 AMP, 120/250 VAC 50-60HZ;
  - 2) Hi-pot RATING (ONE MINUTE):  
LINE TO GROUND: 3000 VDC  
LINE TO LINE: 1100 VDC
  - 3) MAXIMUM LEAKAGE LINE TO GROUND:  
0.43mA @120 VAC 60 Hz;  
0.74mA @250 VAC 50 Hz;
  - 4) CLIMATE CLASS: 25/100/21
- TEMPERATURE RANGE: -25°C to +100°C  
OVERLOAD CURRENT: 1.5x Rated ct. for 1 min.



## ELECTRICAL SCHEMATIC

### 50 ohm - 50 ohm Typical Insertion Loss

FREQUENCY MHZ	0.01	0.1	0.5	1.0	2.0	5.0	10
COMMON DB	6	18	35	41	47	52	59
DIFFERENTIAL DB	5	28	59	46	37	52	40



A	ISSUE	ECN	SUJIT	AJAY	AUG. 2019
REV.	DESCRIPTION		DWN	APVD.	APVD. DATE
<p>ARROW POWER COMPONENTS PVT. LTD. A-40, Wazirpur Industrial Area New Delhi, 110052 Email:- <a href="mailto:aj@emcemv.com">aj@emcemv.com</a></p>					
DRAWN BY	VERIFIED BY	APPROVED BY	CHECKED DATE		
SUJIT	RISHABH	AJAY	09-AUG-2019		
DESC. SINGLE PHASE SINGLE STAGE FILTER					PAGE 1 Of 1
SERIES	PART NO.				
EN2010	EN2010-16-F				