

Fast-Acting Brick SMD Fuse **multicomp**PRO



**RoHS
Compliant**

Description

The SMD fuse for the small size and good electrical performance reliability and quality the solder-free design provides excellent on-off and temperature cycling characteristics during use and also makes our SMD fuses more heat and shock tolerant than typical brick fuses.

Features

- Rapid interruption of excessive current
- Ceramic body and silver plated copper terminal
- Excellent environmental integrity
- One time positive disconnect
- Lead-free and Halogen-free
- Designed to UL 248-14

Specifications

Operating Temperature	: -55°C to +125°C
Storage Conditions	: +10°C to +60°C
Relative Humidity	: ≤ 75% yearly average without dew, maximum 30 days at 95%
Vibration Resistance	: 24 cycles at 15 min. each 10-60Hz at 0.75mm amplitude 60-2000Hz at 10g acceleration

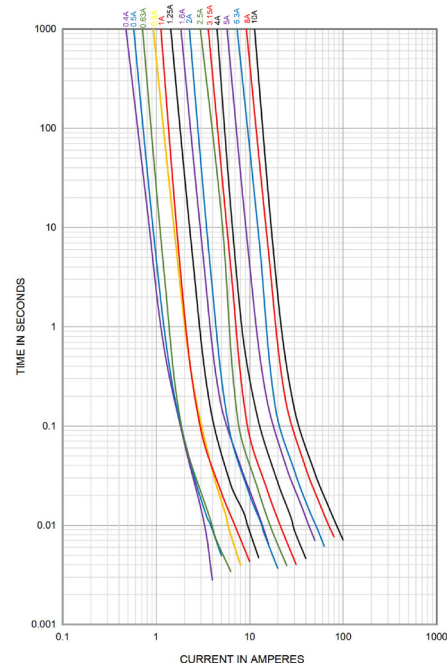
Electrical Characteristics

Time vs Current Characteristics Table

(measured with constant current power supply)

Time vs Current Characteristics		
Rated current	100%	200%
0.4A to 10A	>4h	<60s

Average Time Current (I-T) Curves



Fast-Acting Brick SMD Fuse **multicomp** PRO

Electrical Characteristics at 25°C

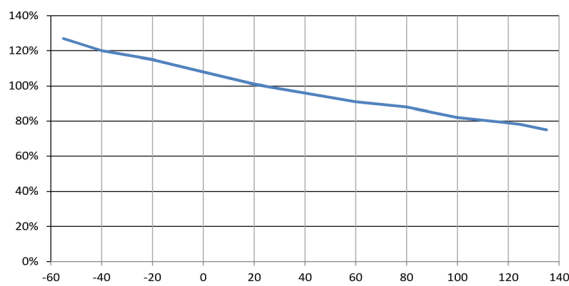
Amp Code	Rated Current	Rated Voltage DC	Max. Voltage Drop (mV)	Breaking Capacity	Typical Melting I ² T (A ² s)	Typ. Cold Resistance (mΩ)
1100	1A	125V AC 250V AC	300	150A@125V AC 150A@250V AC	0.47	103 to 191
1200	2A	125V DC 250V DC 400V DC	150	150A@125V DC 150A@250V DC 100A@400V DC	1.84	36.7 to 68.1

Note:

- (1) Permissible continuous operating current is ≤100% at ambient temperature of 23°C (73.4°F)
- (2) The current values used for calculating I²T should be within the standard range of 8ms~10ms.

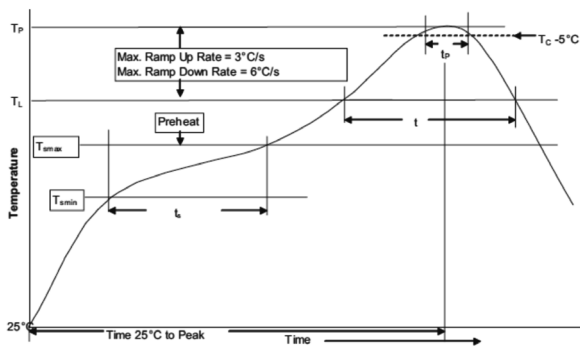
Temperature Re-rating Curve

Temperature Derating Curve



Calculation for ideal fuse selection = $\frac{\text{Operating Current (A)}}{\text{Rating (\% 0.75)}}$

Soldering Parameters



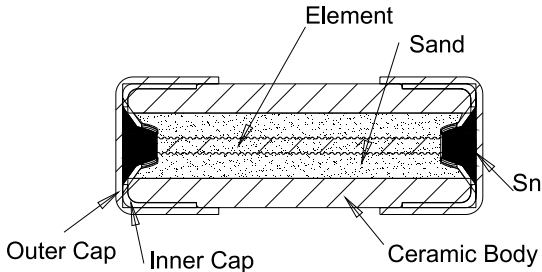
Profile Feature		Pb-Free Assembly
Average Ramp-UP Rate(Tsmax to Tp)		3°C/s Max.
Preheat	Temperature Min (Ts min)	150°C
	Temperature Max (Ts max)	200°C
	Time (Tsmin to Ts max)	60sec to 120sec
Liquidous temperature(TL)		217°C
Time at liquidous(tL)		60 to 150S
Peak package body temperature (Tp)		260°C
Time (tp) within 5°C of the specified classification temperature (Tc)		30S
Average ramp-down rate (Tp to Tsmax)		6°C/s Max.
Time (25°C to Peak Temperature)		8 Minutes Max.

1. Infrared Reflow:
 - Temperature: 260°C
 - Time: 30sec Max.
 - Recommend reflow profile
2. Wave Soldering:
 - Reservoir Temperature: 260°C
 - Time in Reservoir: 10sec Max.

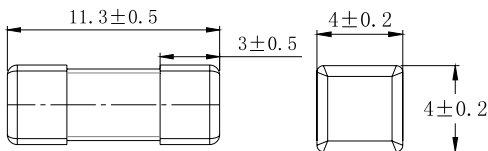
Newark.com/multicomp-pro
 Farnell.com/multicomp-pro
 sg.element14.com/b/multicomp-pro

Fast-Acting Brick SMD Fuse **multicomp** PRO

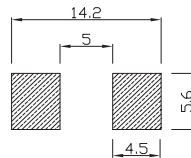
Mechanical Specifications



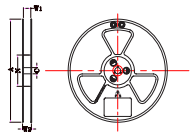
Diagram



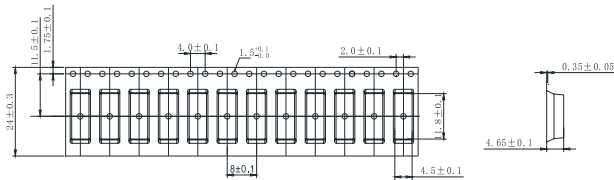
Recommended Land Pattern



Packing Information



A	N (Min.)	W1	W2 (Max.)	C
330	100	24.4 ⁺²	30.4	13 ± 0.25



Part Number Table

Description	Part Number
Brick SMD Fuse, Fast-Acting, 1A, 250V AC / 400V DC	MP001615
Brick SMD Fuse, Fast-Acting, 1A, 250V AC / 400V DC	MP006276
Brick SMD Fuse, Fast-Acting, 2A, 250V AC / 400V DC	MP006277

Dimensions : Millimetres

Important Notice : This data sheet and its contents (the "Information") belong to the members of the AVNET group of companies (the "Group") or are licensed to it. No licence is granted for the use of it other than for information purposes in connection with the products to which it relates. No licence of any intellectual property rights is granted. The Information is subject to change without notice and replaces all data sheets previously supplied. The Information supplied is believed to be accurate but the Group assumes no responsibility for its accuracy or completeness, any error in or omission from it or for any use made of it. Users of this data sheet should check for themselves the Information and the suitability of the products for their purpose and not make any assumptions based on information included or omitted. Liability for loss or damage resulting from any reliance on the Information or use of it (including liability resulting from negligence or where the Group was aware of the possibility of such loss or damage arising) is excluded. This will not operate to limit or restrict the Group's liability for death or personal injury resulting from its negligence. Multicomp Pro is the registered trademark of Premier Farnell Limited 2019.

Newark.com/multicomp-pro
 Farnell.com/multicomp-pro
 sg.element14.com/b/multicomp-pro

multicomp PRO