



LED module, red for plug-in relay, PT and RT series, for DC 24 V with freewheeling diode

product brand name	SIRIUS
product type designation	LZS
General technical data	
display version LED	Yes
reference code according to IEC 81346-2	P
Substance Prohibitance (Date)	05/01/2012
Net Weight	0.002 kg
Control circuit/ Control	
control supply voltage at DC rated value	24 V
Mechanical data	
product component plug-in socket	No
Auxiliary circuit	
number of NC contacts for auxiliary contacts	0
number of NO contacts for auxiliary contacts	0
number of CO contacts for auxiliary contacts	0
Main circuit	
type of voltage	DC
Display	
display version as status display by LED	LED red
Connections/ Terminals	
product function removable terminal	No
Installation/ mounting/ dimensions	
mounting position	any
height	10.5 mm
width	11.4 mm
depth	32 mm
Ambient conditions	
ambient temperature	
• during storage	-25 ... +70 °C
• during transport	-25 ... +70 °C
Approvals Certificates	
Environment	General Product Approval

[Environmental Conformations](#)



[Confirmation](#)

[Confirmation](#)



Further information

Information on the packaging

<https://support.industry.siemens.com/cs/ww/en/view/109813875>

Information for data generation and storage

<https://support.industry.siemens.com/cs/ww/en/view/109995012>

Information- and Downloadcenter (Catalogs, Brochures,...)

<https://www.siemens.com/ic10>

Industry Mall (Online ordering system)

<https://mall.industry.siemens.com/mall/en/en/Catalog/product?mlfb=LZS:PTML0024>

Cax online generator

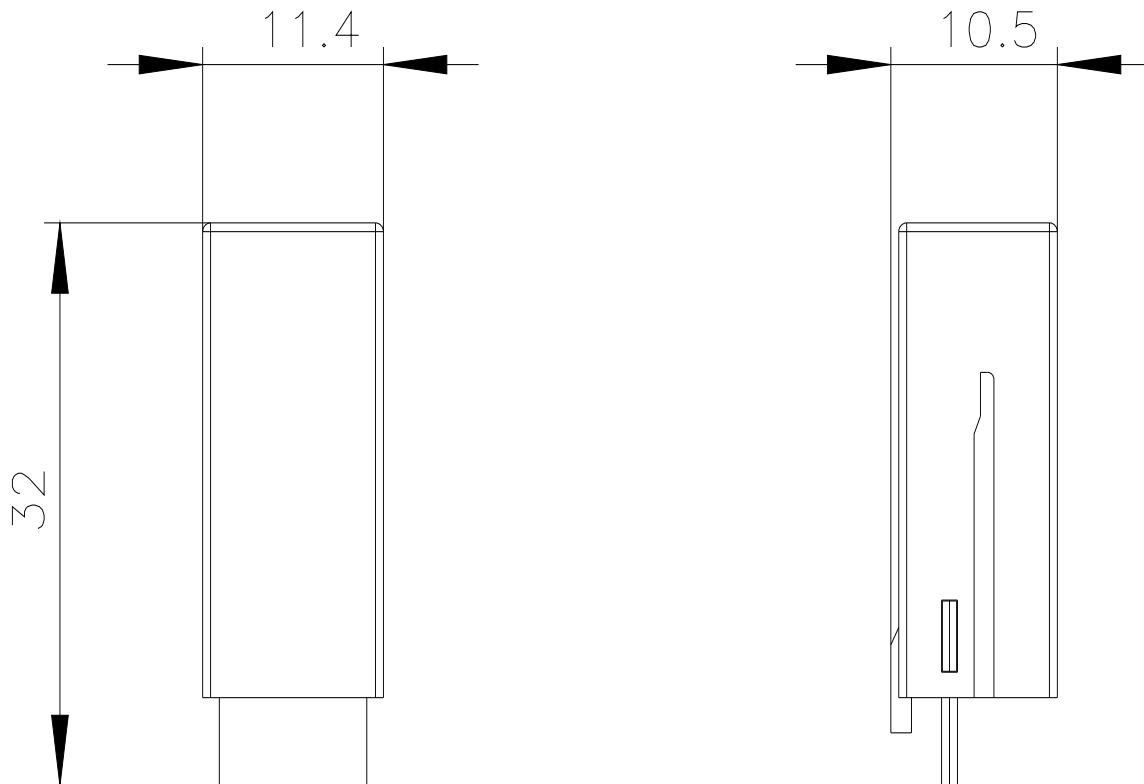
<https://support.automation.siemens.com/WW/CAXorder/default.aspx?lang=en&mlfb=LZS:PTML0024>

Service&Support (Manuals, Certificates, Characteristics, FAQs,...)

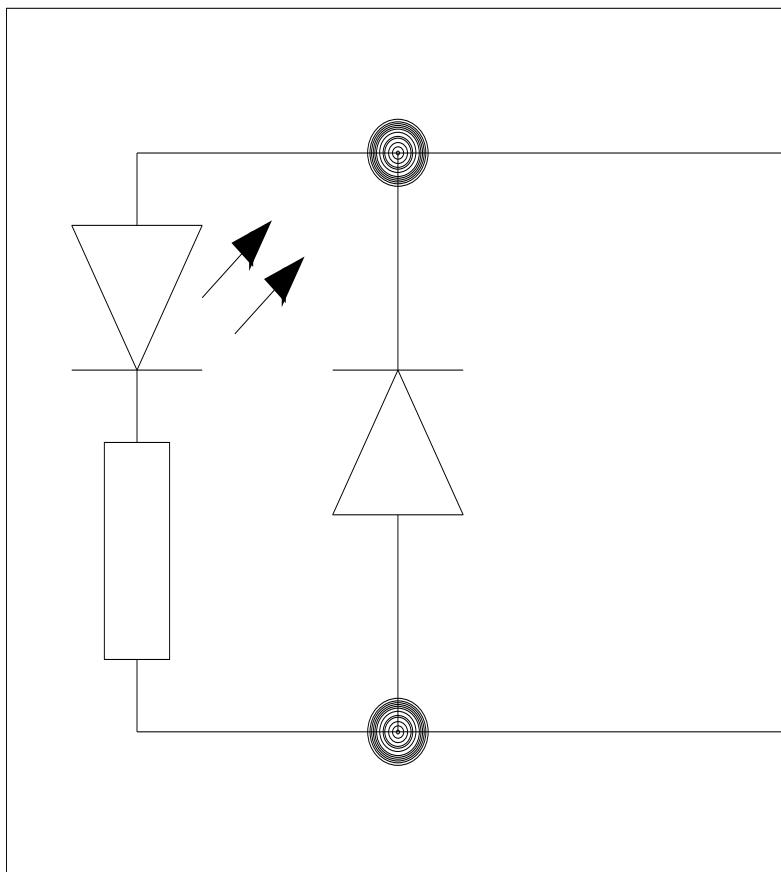
<https://support.industry.siemens.com/cs/ww/en/ps/LZS:PTML0024>

Image database (product images, 2D dimension drawings, 3D models, device circuit diagrams, EPLAN macros, ...)

https://www.automation.siemens.com/bilddb/cax_de.aspx?mlfb=LZS:PTML0024&lang=en



-P



last modified:

10/22/2025 