

Labeling plate 26 mm for PT relay



|  |                          |       |
|--|--------------------------|-------|
| product brand name                           | SIRIUS                   |       |
| product type designation                     | LZS                      |       |
| <b>General technical data</b>                |                          |       |
| display version LED                          | No                       |       |
| reference code according to IEC 81346-2      | C                        |       |
| Substance Prohibitance (Date)                | 05/01/2012               |       |
| Net Weight                                   | 0.76 g                   |       |
| <b>Mechanical data</b>                       |                          |       |
| product component plug-in socket             | No                       |       |
| <b>Auxiliary circuit</b>                     |                          |       |
| number of NC contacts for auxiliary contacts | 0                        |       |
| number of NO contacts for auxiliary contacts | 0                        |       |
| number of CO contacts for auxiliary contacts | 0                        |       |
| <b>Connections/ Terminals</b>                |                          |       |
| product function removable terminal          | No                       |       |
| <b>Installation/ mounting/ dimensions</b>    |                          |       |
| mounting position                            | any                      |       |
| height                                       | 8 mm                     |       |
| width  | 26.5 mm                  |       |
| depth  | 8.5 mm                   |       |
| <b>Ambient conditions</b>                    |                          |       |
| ambient temperature                          |                          |       |
| • during storage                             | -25 ... +70 °C           |       |
| • during transport                           | -25 ... +70 °C           |       |
| <b>Approvals Certificates</b>                |                          |       |
| Environment                                  | General Product Approval | other |

[Environmental Con-  
firmations](#)



[Confirmation](#)

[Confirmation](#)

other



## Further information

### Information on the packaging

<https://support.industry.siemens.com/cs/ww/en/view/109813875>

### Information for data generation and storage

<https://support.industry.siemens.com/cs/ww/en/view/109995012>

### Information- and Downloadcenter (Catalogs, Brochures,...)

<https://www.siemens.com/ic10>

### Industry Mall (Online ordering system)

<https://mall.industry.siemens.com/mall/en/en/Catalog/product?mlfb=LZS:PT17040>

### Cax online generator

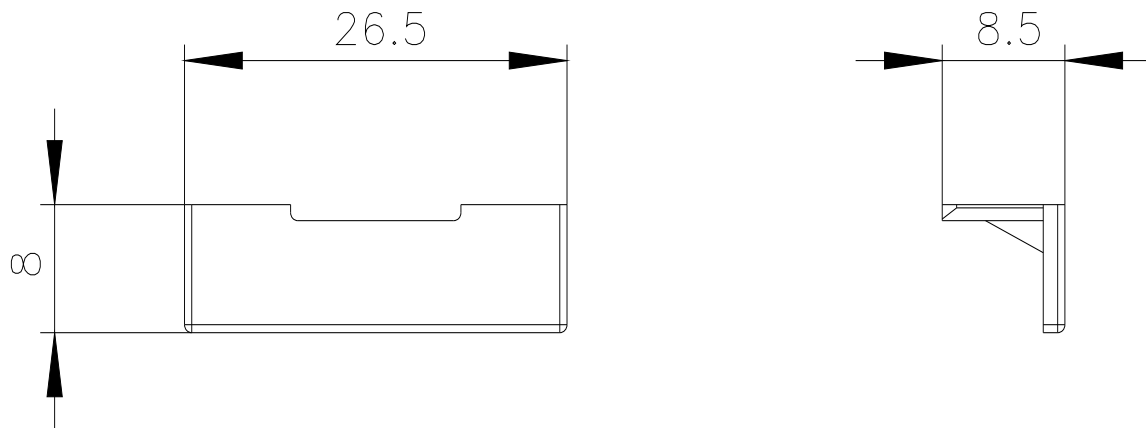
<https://support.automation.siemens.com/WW/CAXorder/default.aspx?lang=en&mlfb=LZS:PT17040>

### Service&Support (Manuals, Certificates, Characteristics, FAQs,...)

<https://support.industry.siemens.com/cs/ww/en/ps/LZS:PT17040>

### Image database (product images, 2D dimension drawings, 3D models, device circuit diagrams, EPLAN macros, ...)

[https://www.automation.siemens.com/bilddb/cax\\_de.aspx?mlfb=LZS:PT17040&lang=en](https://www.automation.siemens.com/bilddb/cax_de.aspx?mlfb=LZS:PT17040&lang=en)



last modified:

10/22/2025 