



Shaft stub 500mm Accessory for circuit breaker 3VA27(toggle)

Model		
product brand name	SENTRON	
product designation	extension shaft	
size of cross-section of the shaft of door-coupling rotary operating mechanism	10x10 mm	
length of shaft of door-coupling rotary operating mechanism	500 mm	
suitability for use	for door mounted rotary operator 3VA27 with manual handle operator	
Product details		
product component		
• extension shaft	Yes	
Accessories		
accessories	Extension shaft	
Mechanical Design		
height	61 mm	
width	90 mm	
depth	140 mm	
Net Weight	425 g	
Approvals Certificates		
Environment	General Product Approval	Maritime application

[Environmental Con-
firmations](#)



EG-Konf.

[Confirmation](#)



LRS

other

[Confirmation](#)

[Miscellaneous](#)



Further information

- Information on the packaging
<https://support.industry.siemens.com/cs/ww/en/view/109813875>
- Information for data generation and storage
<https://support.industry.siemens.com/cs/ww/en/view/109995012>
- Information- and Downloadcenter (Catalogs, Brochures,...)
<https://www.siemens.com/lowvoltage/catalogs>
- Industry Mall (Online ordering system)

<https://mall.industry.siemens.com/mall/en/en/Catalog/product?mlfb=8UD1900-3WD00>

Service&Support (Manuals, Certificates, Characteristics, FAQs,...)

<https://support.industry.siemens.com/cs/ww/en/ps/8UD1900-3WD00>

Image database (product images, 2D dimension drawings, 3D models, device circuit diagrams, ...)

https://www.automation.siemens.com/bilddb/cax_en.aspx?mlfb=8UD1900-3WD00

CAX-Online-Generator

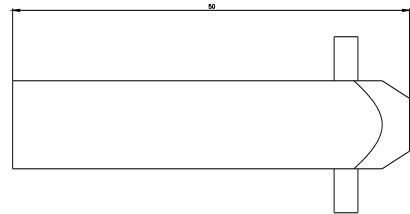
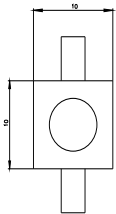
<https://www.siemens.com/cax>

Tender specifications

<https://www.siemens.com/specifications>

Characteristic curves

[https://curves.simaris.siemens.com/curves/<mmp_prod_noCOMP="HAUPT"></mmp_prod_no>](https://curves.simaris.siemens.com/curves/<mmp_prod_noCOMP=)



last modified:

4/4/2025 

