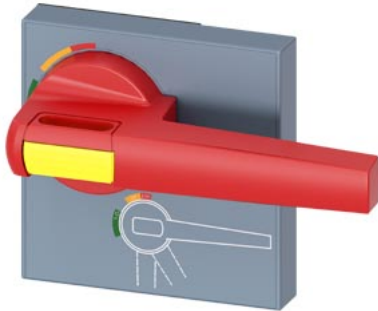


handle f. door-coupling rot. op. mech. emergency-off accessory for circuit breaker 3VA27 (handle)



Model		
product brand name	SETRON	
product designation	handle	
design of the product	EMERGENCY OFF without tolerance compensation	
design of handle	Red-yellow	
size format of the masking frame of door-coupling rotary operating mechanism	105x 105 mm	
length of handle	140 mm	
suitability for use	for door mounted rotary operator 3VA27 with manual handle operator	
Product details		
product component	Yes	
<ul style="list-style-type: none"> handle for emergency-OFF function 		
Accessories		
accessories	Accessories for 3VA27 circuit breakers	
Mechanical Design		
height	61 mm	
width	90 mm	
depth	140 mm	
Net Weight	0.18 kg	
Approvals Certificates		
Environment	General Product Approval	Maritime application

[Environmental Confirmations](#)



[Confirmation](#)



other

[Confirmation](#)

[Miscellaneous](#)



Further information

Information on the packaging
<https://support.industry.siemens.com/cs/ww/en/view/109813875>
 Information for data generation and storage
<https://support.industry.siemens.com/cs/ww/en/view/109995012>
 Information- and Downloadcenter (Catalogs, Brochures,...)

<https://www.siemens.com/lowvoltage/catalogs>

Industry Mall (Online ordering system)

<https://mall.industry.siemens.com/mall/en/en/Catalog/product?mlfb=8UD1861-0AB15>

Service&Support (Manuals, Certificates, Characteristics, FAQs,...)

<https://support.industry.siemens.com/cs/ww/en/ps/8UD1861-0AB15>

Image database (product images, 2D dimension drawings, 3D models, device circuit diagrams, ...)

https://www.automation.siemens.com/bilddb/cax_en.aspx?mlfb=8UD1861-0AB15

CAX-Online-Generator

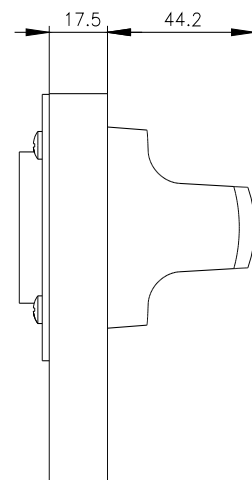
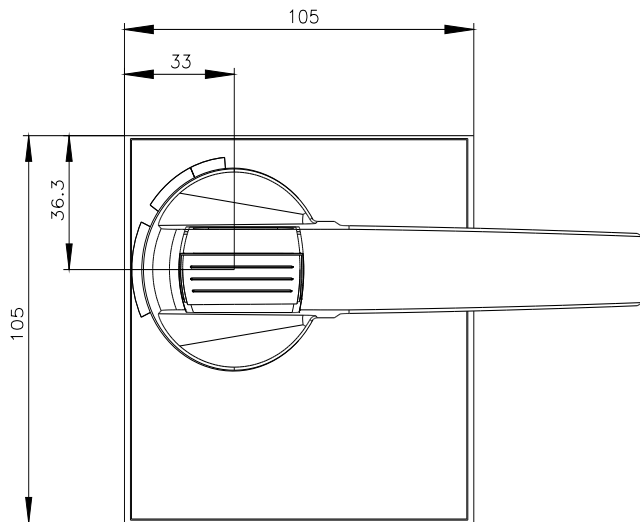
<https://www.siemens.com/cax>

Tender specifications

<https://www.siemens.com/specifications>

Characteristic curves

https://curves.simaris.siemens.com/curves/<mmp_prod_noCOMP='HAUPT'></mmp_prod_no>



last modified:

4/9/2025 

