



Handle with masking frame Emergency stop with tolerance compensation
 Accessory for: 3VA1/2 100/160/250

Model	
product brand name	SETRON
product designation	handle with masking plate
design of the product	emergency stop with tolerance compensation
design of handle	Red-yellow
design of the door lock system	Door interlocking
size of cross-section of the shaft of door-coupling rotary operating mechanism	8x8 mm
size format of the masking frame of door-coupling rotary operating mechanism	75x 75 mm
length of handle	36 mm
protection class IP	IP65
suitability for use	3VA1/2

Product details	
product description	size 100x100 mm, shaft 8 x 8 mm
product feature interlock	Yes
product component	
• extension shaft	No
• handle for emergency-OFF function	Yes
product feature lockable	Yes

Accessories	
accessories	Handle with masking frame

Mechanical Design	
height	75 mm
width	75 mm
depth	128.9 mm
Net Weight	218 g

Approvals Certificates	
Environment	General Product Approval

[Environmental Confirmations](#)



[Confirmation](#)



Test Certificates	Maritime application	other
-------------------	----------------------	-------



Further information

Information on the packaging

<https://support.industry.siemens.com/cs/ww/en/view/109813875>

Information for data generation and storage

<https://support.industry.siemens.com/cs/ww/en/view/109995012>

Information- and Downloadcenter (Catalogs, Brochures,...)

<https://www.siemens.com/lowvoltage/catalogs>

Industry Mall (Online ordering system)

<https://mall.industry.siemens.com/mall/en/en/Catalog/product?mlfb=8UD1721-0AB25>

Service&Support (Manuals, Certificates, Characteristics, FAQs,...)

<https://support.industry.siemens.com/cs/ww/en/ps/8UD1721-0AB25>

Image database (product images, 2D dimension drawings, 3D models, device circuit diagrams, ...)

https://www.automation.siemens.com/bilddb/cax_en.aspx?mlfb=8UD1721-0AB25

CAx-Online-Generator

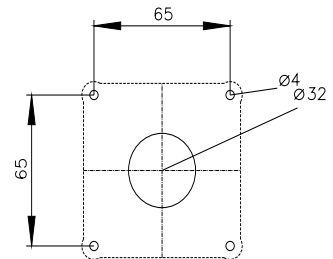
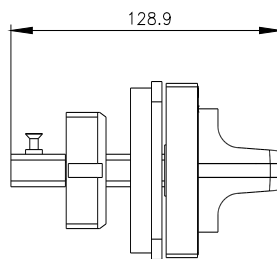
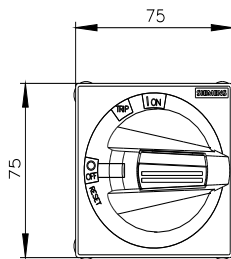
<https://www.siemens.com/cax>

Tender specifications

<https://www.siemens.com/specifications>

Characteristic curves

[https://curves.simaris.siemens.com/curves/<mmp_prod_noCOMP="HAUPT"></mmp_prod_no>](https://curves.simaris.siemens.com/curves/<mmp_prod_noCOMP=)



last modified:

5/24/2025