



Handle with masking frame Emergency stop without tolerance compensation  
 Accessory for: 3VA1/2 100/160/250

Model	
product brand name	SETRON
product designation	handle with masking plate
design of the product	emergency stop without tolerance compensation
design of handle	Red-yellow
design of the door lock system	Door interlocking
size of cross-section of the shaft of door-coupling rotary operating mechanism	8x8 mm
size format of the masking frame of door-coupling rotary operating mechanism	75x 75 mm
length of handle	36 mm
protection class IP	IP65
suitability for use	3VA1/2

Product details	
product description	size 100x100 mm, shaft 8 x8 mm
product feature interlock	Yes
product component	
• extension shaft	No
• handle for emergency-OFF function	Yes
product feature lockable	Yes

Accessories	
accessories	Handle with masking frame

Mechanical Design	
height	75 mm
width	75 mm
depth	76.8 mm
Net Weight	164 g

Approvals Certificates	
Environment	General Product Approval

[Environmental Confirmations](#)



[Confirmation](#)

Test Certificates	Maritime application	other
-------------------	----------------------	-------

Further information

**Information on the packaging**

<https://support.industry.siemens.com/cs/ww/en/view/109813875>

**Information for data generation and storage**

<https://support.industry.siemens.com/cs/ww/en/view/109995012>

**Information- and Downloadcenter (Catalogs, Brochures,...)**

<https://www.siemens.com/lowvoltage/catalogs>

**Industry Mall (Online ordering system)**

<https://mall.industry.siemens.com/mall/en/en/Catalog/product?mlfb=8UD1721-0AB15>

**Service&Support (Manuals, Certificates, Characteristics, FAQs,...)**

<https://support.industry.siemens.com/cs/ww/en/ps/8UD1721-0AB15>

**Image database (product images, 2D dimension drawings, 3D models, device circuit diagrams, ...)**

[https://www.automation.siemens.com/bilddb/cax\\_en.aspx?mlfb=8UD1721-0AB15](https://www.automation.siemens.com/bilddb/cax_en.aspx?mlfb=8UD1721-0AB15)

**CAX-Online-Generator**

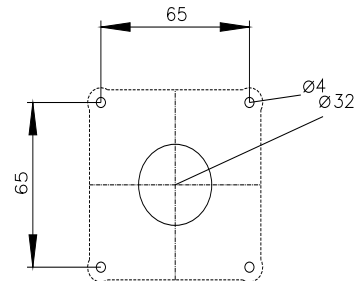
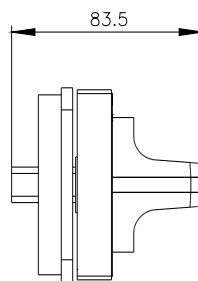
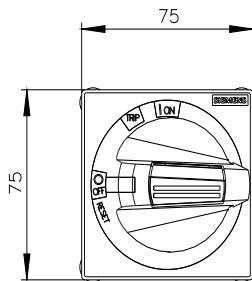
<https://www.siemens.com/cax>

**Tender specifications**

<https://www.siemens.com/specifications>

**Characteristic curves**

[https://curves.simaris.siemens.com/curves/<mmp\\_prod\\_noCOMP="HAUPT"></mmp\\_prod\\_no>](https://curves.simaris.siemens.com/curves/<mmp_prod_noCOMP=)



last modified:

5/24/2025 

