

SIMATIC IPC, mounting kit DIN rail for SIMATIC IPC127E / SIMATIC IPC BX-21A

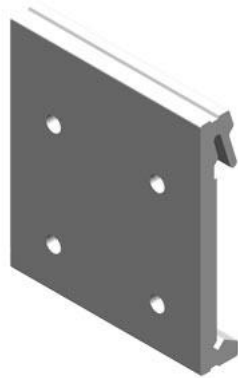


Figure similar

**General information**

Product type designation: Mounting set

**Classifications**

	Version	Classification
eClass	14	19-20-01-92
eClass	12	19-20-01-92
eClass	9.1	19-20-92-90
eClass	9	19-20-92-90
eClass	8	19-20-92-90
eClass	7.1	19-20-92-90
eClass	6	19-20-92-90
ETIM	10	EC002584
ETIM	9	EC002584
ETIM	8	EC002584
ETIM	7	EC002584
IDEA	4	6628
UNSPSC	15	43-21-16-12

**Approvals / Certificates**

General Product Approval

[Manufacturer Declaration](#)

**Further information**

Usable in the following products: Detailed information can be found in the cross-list, which is available for download in the following SIOS note: 40466415  
<https://support.industry.siemens.com/cs/document/40466415/status-of-the-simatic-hmi-accessories-and-cross-list-update?dti=0&lc=en-WW>

last modified: 3/12/2024