



Single-flash light element, w. built-in electronic flash, green, 115 V AC, Diameter 70 mm

product brand name	SIRIUS
product designation	Flashlight element
design of the product	including light sources
General technical data	
type of voltage of the operating voltage	AC
operating voltage	
• 1 at AC at 50 Hz rated value	115 V
• 1 at AC at 60 Hz rated value	115 V
relative positive tolerance of the operating voltage	10 %
relative negative tolerance of the operating voltage	-10 %
reference code according to EN 61346-2	P
Lamp	
product component light source	Yes
type of light source	Xenon gas discharge lamp
design of the optical signal	flash light
light intensity	18 809 cd
flash frequency	1 Hz
number of flashes of light element	4 000 000
Enclosure	
height	65.5 mm
width	70 mm
outer diameter of the signal column element	70 mm
material	PC
color	green
fastening method	Bayonet
protection class IP	IP65
Ambient conditions	
ambient temperature during operation	-20 ... +50 °C
Approvals Certificates	
General Product Approval	other



[Confirmation](#)



[Confirmation](#)

other	Environment
-------	-------------



Further information

Information on the packaging

<https://support.industry.siemens.com/cs/ww/en/view/109813875>

Information for data generation and storage

<https://support.industry.siemens.com/cs/ww/en/view/109995012>

Information- and Downloadcenter (Catalogs, Brochures,...)

<https://www.siemens.com/ic10>

Industry Mall (Online ordering system)

<https://mall.industry.siemens.com/mall/en/en/Catalog/product?mlfb=8WD4440-0CC>

Cax online generator

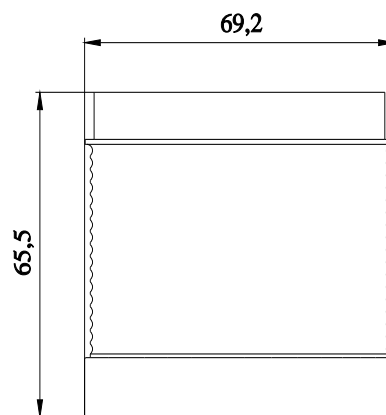
<https://support.automation.siemens.com/WW/CAXorder/default.aspx?lang=en&mlfb=8WD4440-0CC>

Service&Support (Manuals, Certificates, Characteristics, FAQs,...)

<https://support.industry.siemens.com/cs/ww/en/ps/8WD4440-0CC>

Image database (product images, 2D dimension drawings, 3D models, device circuit diagrams, EPLAN macros, ...)

https://www.automation.siemens.com/bilddb/cax_de.aspx?mlfb=8WD4440-0CC&lang=en



-P



last modified:

4/1/2025 