

Flashlight element, with integrated LED, clear, 24 V AC/DC, Diameter 70 mm



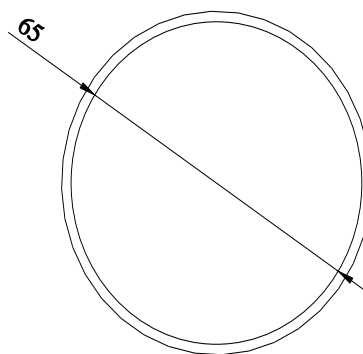
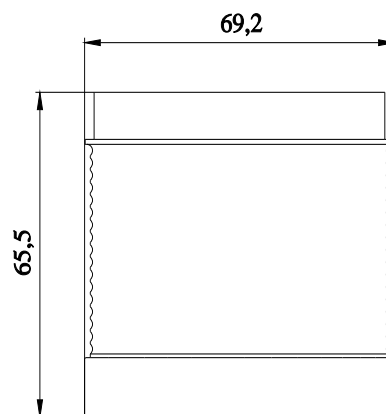
product brand name	SIRIUS
product designation	Repeated-flash light element
design of the product	including light sources
<b>General technical data</b>	
type of voltage of the operating voltage	AC/DC
operating voltage	
• 1 at DC rated value	24 V
• 1 at AC at 50 Hz rated value	24 V
• 1 at AC at 60 Hz rated value	24 V
relative positive tolerance of the operating voltage	10 %
relative negative tolerance of the operating voltage	-10 %
consumed current maximum	35 mA
reference code according to EN 61346-2	P
<b>Lamp</b>	
product component light source	Yes
type of light source	LED
service life of LED	100 000 h
design of the optical signal	blinklight
light intensity	1.69 cd
light intensity	1.11 ... 2.41 cd
flashing frequency	1 Hz
<b>Enclosure</b>	
height	65.5 mm
width	70 mm
outer diameter of the signal column element	70 mm
material	PC
color	clear
fastening method	Bayonet
protection class IP	IP65
<b>Ambient conditions</b>	
ambient temperature during operation	-20 ... +50 °C
<b>Approvals Certificates</b>	
General Product Approval	other



[Confirmation](#)



[Confirmation](#)

[Confirmation](#)[Environmental Con-  
firmations](#)**Further information****Information on the packaging**<https://support.industry.siemens.com/cs/ww/en/view/109813875>**Information for data generation and storage**<https://support.industry.siemens.com/cs/ww/en/view/109995012>**Information- and Downloadcenter (Catalogs, Brochures,...)**<https://www.siemens.com/ic10>**Industry Mall (Online ordering system)**<https://mall.industry.siemens.com/mall/en/en/Catalog/product?mlfb=8WD4420-5BE>**Cax online generator**<https://support.automation.siemens.com/WW/CAXorder/default.aspx?lang=en&mlfb=8WD4420-5BE>**Service&Support (Manuals, Certificates, Characteristics, FAQs,...)**<https://support.industry.siemens.com/cs/ww/en/ps/8WD4420-5BE>**Image database (product images, 2D dimension drawings, 3D models, device circuit diagrams, EPLAN macros, ...)**[https://www.automation.siemens.com/bilddb/cax\\_de.aspx?mlfb=8WD4420-5BE&lang=en](https://www.automation.siemens.com/bilddb/cax_de.aspx?mlfb=8WD4420-5BE&lang=en)

**-P**



last modified:

4/1/2025 