



repeated-flash light element, with integrated LED, clear, 24 V AC/DC, diameter 50 mm

product brand name	SIRIUS
product designation	Repeated-flash light element
design of the product	including light sources
<b>General technical data</b>	
type of voltage of the operating voltage	AC/DC
operating voltage	
• 1 at DC rated value	24 V
• 1 at AC at 50 Hz rated value	24 V
• 1 at AC at 60 Hz rated value	24 V
relative positive tolerance of the operating voltage	10 %
relative negative tolerance of the operating voltage	-10 %
consumed current maximum	35 mA
reference code according to EN 61346-2	P
<b>Safety related data</b>	
MTTFd	2 152 a
<b>Lamp</b>	
product component light source	Yes
type of light source	LED
service life of LED	100 000 h
design of the optical signal	blinklight
light intensity	6.68 cd
light intensity	3.87 ... 9.74 cd
flashing frequency	1 Hz
<b>Enclosure</b>	
height	67 mm
width	52 mm
outer diameter of the signal column element	50 mm
material	PC
color	clear
fastening method	Bayonet
protection class IP	IP54
<b>Ambient conditions</b>	
ambient temperature during operation	-20 ... +50 °C
<b>Approvals Certificates</b>	
General Product Approval	other



[Confirmation](#)



[Confirmation](#)

other

Environment

[Confirmation](#)



[Environmental Con-  
firmations](#)



#### Further information

Information on the packaging

<https://support.industry.siemens.com/cs/ww/en/view/109813875>

Information for data generation and storage

<https://support.industry.siemens.com/cs/ww/en/view/109995012>

Information- and Downloadcenter (Catalogs, Brochures,...)

<https://www.siemens.com/ic10>

Industry Mall (Online ordering system)

<https://mall.industry.siemens.com/mall/en/en/Catalog/product?mlfb=8WD4220-5BE>

Cax online generator

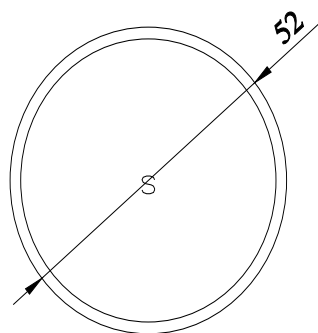
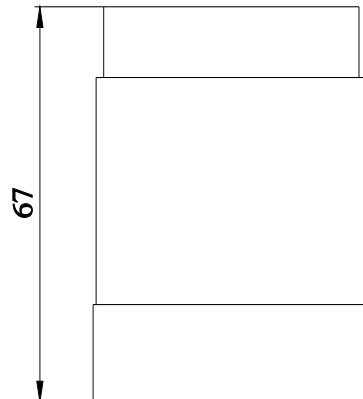
<https://support.automation.siemens.com/WW/CAXorder/default.aspx?lang=en&mlfb=8WD4220-5BE>

Service&Support (Manuals, Certificates, Characteristics, FAQs,...)

<https://support.industry.siemens.com/cs/ww/en/ps/8WD4220-5BE>

Image database (product images, 2D dimension drawings, 3D models, device circuit diagrams, EPLAN macros, ...)

[https://www.automation.siemens.com/bilddb/cax\\_de.aspx?mlfb=8WD4220-5BE&lang=en](https://www.automation.siemens.com/bilddb/cax_de.aspx?mlfb=8WD4220-5BE&lang=en)



**-P**



last modified:

4/1/2025 